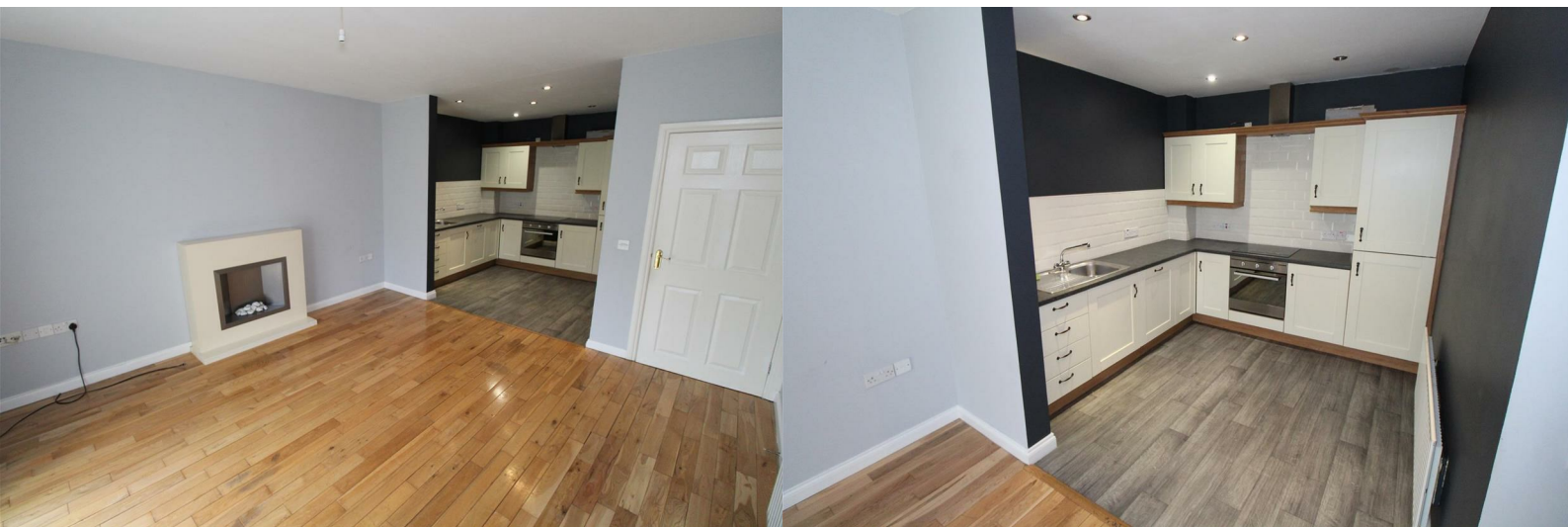




## 42 Rosses Meadow

Ballymena, BT42 2SD

£750 Per Month



# 42 Rosses Meadow

, Ballymena, BT42 2SD

**£750 Per Month**



## Hallway

22'11" x 3'10" (6.99 x 1.16)

Store cupboard. Solid oak flooring.

Separate access to store .Outside light. Communal gardens and communal off road parking.

## Lounge/Dining

13'7" x 13'1" (4.14 x 4.00)

Sold oak flooring. Double patio doors to rear patio area.

## Kitchen

9'3" x 9'2" (2.82 x 2.79)

High and low wall units with under lights. Halogen hob with and extractor hood. Electric oven. Stainless steel sink. Integrated fridge/freezer. Tiled splash back.

## Bedroom 1 - Front

13'1" x 9'2" (4.00 x 2.79)

Carpet.

## Bedroom 2 - Front

10'1" x 10'2" (3.069 x 3.11)

Carpet.

## Family Bathroom

10'4" x 5'10" (3.14 x 1.78)

Fitted with P Shaped bath with shower head. WC and WHB.

## Bedroom 3 - Rear

14'3" x 10'2" (4.35 x 3.09)

Carpet.

## En-Suite

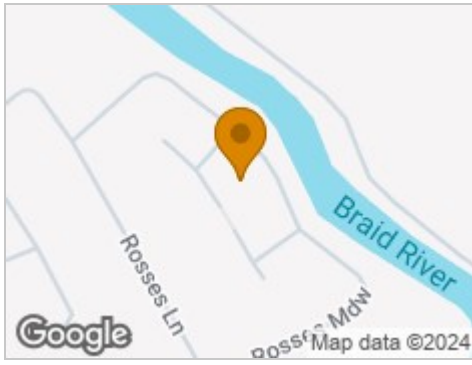
6'2" x 6'1" (1.88 x 1.85)

Fitted with WC, WHB and Quad Shower.

## Outside



## Road Map



## Hybrid Map



## Terrain Map



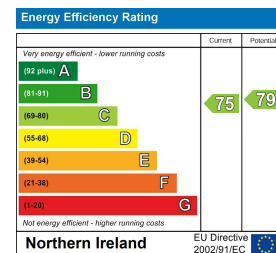
## Floor Plan



## Viewing

Please contact our Ballymena Office on 02825655733 if you wish to arrange a viewing appointment for this property or require further information.

## Energy Efficiency Graph



These particulars, whilst believed to be accurate are set out as a general outline only for guidance and do not constitute any part of an offer or contract. Intending purchasers should not rely on them as statements of representation of fact, but must satisfy themselves by inspection or otherwise as to their accuracy. No person in this firm's employment has the authority to make or give any representation or warranty in respect of the property. Edmondson Estates have not tested any services, equipment, or facilities within the premises and will not be liable, in negligence or otherwise, for any loss arising from the use of these particulars.