



Bond
Oxborough
Phillips

The key to moving home

Flat 3 London House

Hatherleigh

EX20 3JH



BRITISH
PROPERTY
AWARDS

2024



GOLD WINNER

ESTATE AGENT
IN OKEHAMPTON



Guide Price - £130,000

Flat 3 London House Hatherleigh EX20 3JH



- One-bedroom terraced home in Hatherleigh.
- Open-plan living with cozy lounge and modern kitchen.
- Wood beam feature in the living area.
- Stylish kitchen
- Spacious double bedroom with feature wall.
- Modern bathroom with contemporary fittings.
- Bright interiors with large windows.
- Small front outdoor space for plants or seating.
- Close to shops, cafes, and amenities.
- Easy access to countryside walks
- Ultrafast Fibre Broadband
- Council Tax Band - A
- EPC - E



Charming One-Bedroom House in the Heart of Hatherleigh

Nestled in the picturesque town of Hatherleigh, this delightful one-bedroom home offers a perfect blend of character and modern comfort. Ideal for first-time buyers, downsizers, or investors, the property boasts a beautifully presented open-plan living space, a modern kitchen, and a cosy bedroom, all set within a quaint terrace.

The heart of the home is the welcoming open-plan living and kitchen area. Bright and airy, with neutral decor and a charming wood beam adding character, this space is ideal for relaxing or entertaining. Large windows allow for plenty of natural light to flow in, creating a warm and inviting atmosphere. The compact yet modern kitchen is stylishly designed, with sleek cabinetry, quality countertops, perfect for preparing meals.

Upstairs, the generously sized double bedroom offers a peaceful retreat, with neutral tones and a calming feature wall. A large window allows light to flood the room, while the space is ample enough to ensure comfort and practicality. The modern bathroom is fitted with contemporary fixtures, providing everything needed for everyday convenience.

Outside, the front of the property includes a small space for potted plants or a seating area, adding to the home's charm. Located in the heart of Hatherleigh, this house enjoys close proximity to local amenities such as shops, cafes, and public transport, while also offering easy access to the surrounding countryside.

With its inviting interiors and excellent location, this home provides a wonderful opportunity to enjoy both town and country living. Viewings are highly recommended



Changing Lifestyles

Situated within the heart of Hatherleigh town which offers a traditional range of amenities including supermarket, Post Office, garage, public houses and has cafes, arts and crafts shops, farm supplies and building supplies.

The town also benefits from a primary school, health centre, veterinary surgery together with a community centre and weekly market and cattle sales. The town has a strong community spirit with an annual arts festival and renowned carnival.



Please do not hesitate to contact
the team at
Bond Oxborough Phillips
Sales & Lettings on
01837 500600
for more information or to
arrange an accompanied viewing
on this property.

Scan here for
our Virtual Tour:



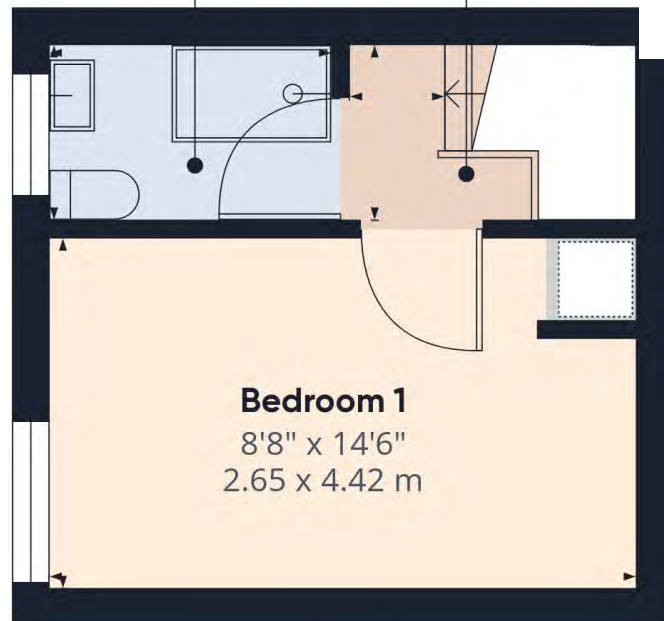


Floor 0

Approximate total area⁽¹⁾

360.8 ft²

33.52 m²



Floor 1

Have a property to sell or let?

If you are considering selling or letting your home, get in contact with us today on 01837 500600 to speak with one of our expert team who will be able to provide you with a free valuation of your home.

We have the facility to refer purchasers and vendors to conveyancing, mortgage advisors and Surveyors. It is your decision if you choose to deal with any of these companies however should you choose to use them we would receive a referral fee from them for recommending you. We will receive a referral fee between £50 - £300 depending on the company & individual circumstances. We have carefully selected these associates for the quality of their work and customer service levels.

Consumer Protection Regulations: We have not tested any apparatus, equipment, fixtures and fittings or services and so cannot verify that they are in working order or fit for the purpose. References to the Tenure of a Property are based on information supplied by the seller. We have not had sight of the Title Documents. A buyer is advised to obtain verification from their solicitor or surveyor. Floorplans shown are for guidance only and should not be relied upon. Items shown in photographs are NOT included unless specifically mentioned within these details. They may however be able by separate negotiation. You are advised to check the availability of this property before travelling any distance to view. Particulars are produced in good faith to the best of our knowledge and are set out as a general guide only.