





Secure Modern Unit on 2 Acres – Slane Road, Collon, County Louth

A modern industrial unit is located on 2 acres of hardstanding on a elevated prominent site close to Collon Village on the N2 road Network.

Unit 2, Slane Road, Collon, Co. Louth

The premises ideal for a wide range of commercial and industrial uses. The property offers extensive vehicle storage capacity and it enjoys the benefit of excellent road connectivity to major towns and cities.

KEY FEATURES

- Workshop with Office and Storage: Spacious workshop complete with an office, storage areas, kitchenette and toilets, offering convenience and functionality for any business operation
- 2 Acres Hardstanding: Providing capacity for up to 200 vehicles, ideal for fleet storage, vehicle sales or other industrial uses
- Fully Secured Site: The entire property is fully fenced for maximum security
- Vehicle Wash with Interceptor: Onsite vehicle wash facility equipped with an interceptor to ensure compliance with environmental regulations
- New Insulated Roof: Recently installed, the new insulated roof enhances energy efficiency and reduces operational costs
- Prime Location on Slane Road, Collon
- Easy access to N2, M1, and M3 motorways, connecting to Dublin, Drogheda, Navan, and other major towns

- 20 minutes from Drogheda, 45 minutes from Dublin City Centre

- Proximity to local amenities in Collon and surrounding areas

POTENTIAL USES

- Vehicle storage and servicing
- Industrial operations
- Warehousing and distribution
- Transport or logistics hub

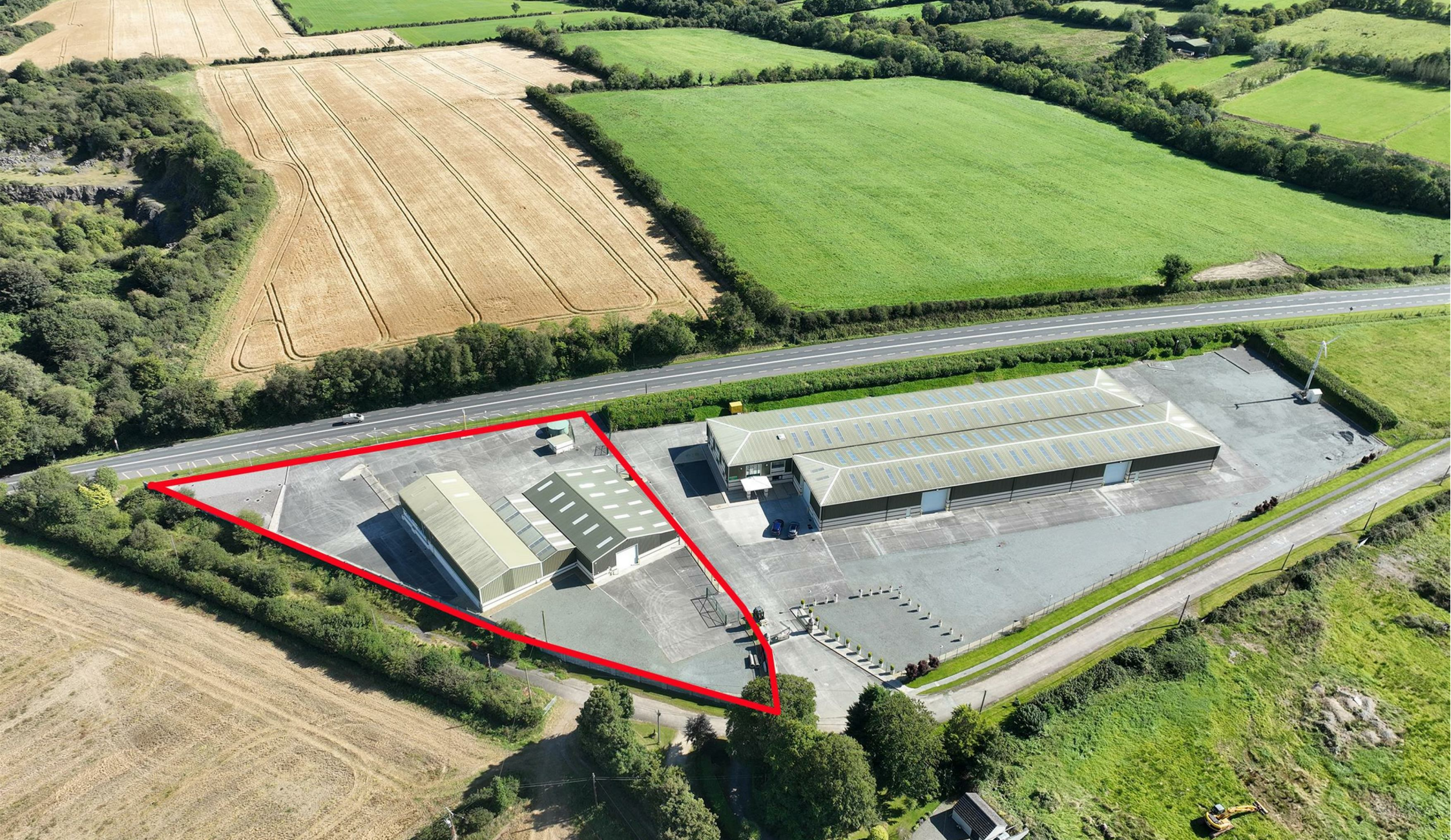
FOR FURTHER DETAILS

Contact Darren Whelan on 046 9027666

DIRECTIONS

Situated on a prime roadside site along the N2, the property benefits from high visibility and easy access for clients and suppliers. Just a short drive from Dublin and major industrial centres, this location is ideal for businesses seeking a central point between key Irish markets.





0469027666

38 Watergate Street, Navan, Co. Meath, C15 PT8X
raymondpotterton.com

Follow us:

