



9 Rathcoole Drive, Newtownabbey, BT37 9AQ

£795 Per Month



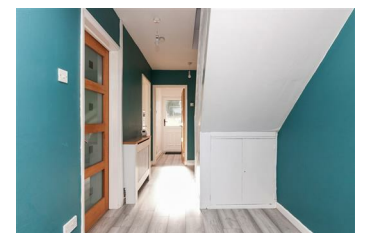
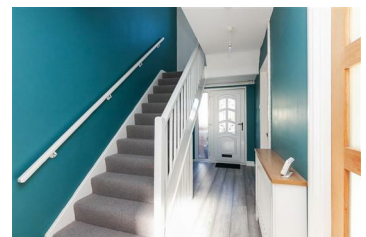
Immaculately presented, three bedroom, mid terrace property with fully enclosed rear garden, conveniently located within the popular Rathcoole area, Newtownabbey.

The property comprises entrance hall, furnished cloakroom, bay fronted lounge, kitchen with informal dining area, three well proportioned first floor bedrooms, and bathroom with white three piece suite.

Externally, the property enjoys low maintenance front garden finished in decorative stone, and fully enclosed rear garden, finished in lawn, paved patio area and decorative stone.

Other attributes include gas fired central heating and PVC double glazing.

Early viewing highly recommended to avoid disappointment.



INVESTORS IN PEOPLE
We invest in people Gold

PRS Property Redress Scheme

Proudly sponsoring



Awards



WE ARE MACMILLAN
CANCER SUPPORT