

TYPE A, SITE 1 COASTLANDS INCLUDING GARAGE, SHORE ROAD, BALLYHALBERT, BT22

COASTLANDS IS AN EXCLUSIVE DEVELOPMENT OF SIX HOMES, WITH A MIX OF DETACHED AND SEMI-DETACHED HOMES WITH SINGLE GARAGES, LOCATED ON THE SHORE ROAD IN BALLYHALBERT.

Welcome to our exclusive new development in the picturesque village of Ballyhalbert, offering six beautifully crafted homes designed for modern living by the sea. Nestled along Northern Ireland's stunning eastern coastline, this development blends the charm of coastal life with the convenience and luxury of contemporary design.

Each home is thoughtfully designed, featuring spacious open-plan layouts, high-quality finishes, and energy-efficient features to ensure comfort and style. Large windows invite natural light and offer scenic views, while private gardens provide a tranquil outdoor retreat. Whether you're enjoying the calming sea breeze or hosting family and friends, these homes are perfect for embracing the best of both indoor and outdoor living.

Located just a short stroll from Ballyhalbert's sandy beaches and quaint village, you'll enjoy the peace and beauty of coastal living, with the added convenience of local amenities, schools, and easy access to nearby towns and cities. Perfect for families, retirees, or anyone looking to escape to a quieter pace of life, this unique development presents a rare opportunity to own a modern home in a truly idyllic setting.

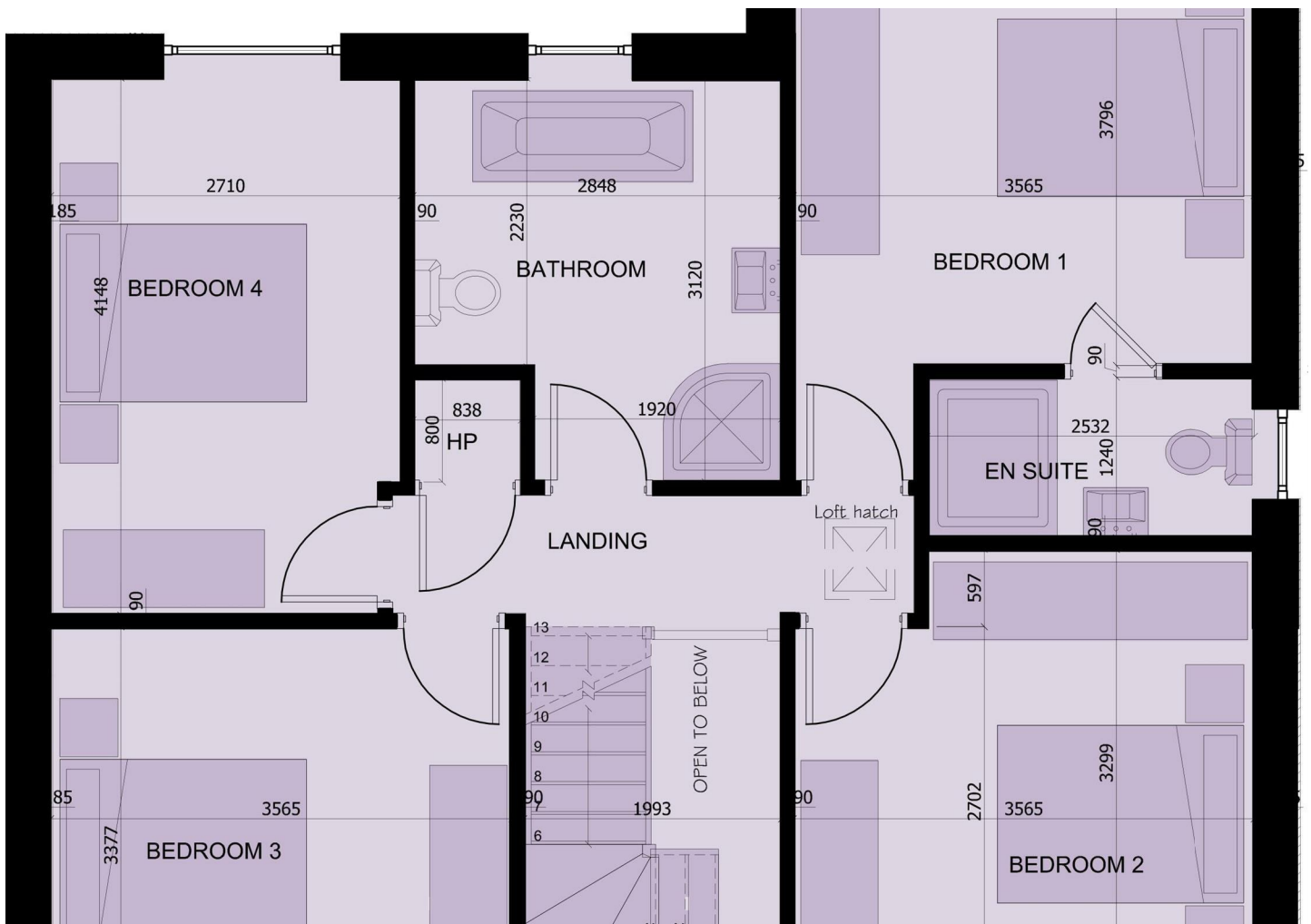
Discover Ballyhalbert - where every day feels like a getaway.

Energy Efficiency Rating		Current	Potential
Very energy efficient - lower running costs			
(92 plus)	A		
(81-91)	B		
(69-80)	C		
(55-68)	D		
(39-54)	E		
(21-38)	F		
(1-20)	G		
Not energy efficient - higher running costs			
Northern Ireland		EU Directive 2002/91/EC	

ASKING PRICE £344,950

TYPE A, SITE 1 COASTLANDS INCLUDING GARAGE, SHORE ROAD, RAIIVLAI REDT RT??

Key Features





SPECIFICATION

KITCHEN & UTILITY

- 22mm Square Edge Formica work tops in kitchen, with matching 100mm upstand, hob splash back.
- Soft close drawers, with a choice of doors.
- Integrated appliances to include, hob and extractor, built in oven, built in microwave, integrated fridge freezer and dishwasher.
- Concealed under unit lighting in kitchen and utility.
- Utility room with 22mm square edge Formica work top, sink and cupboards with space for washing machine and tumble dryer.
- Recessed LED brushed chrome down lighters to ceilings.
- Fully tiled floors.

BATHROOMS

- Contemporary white sanitary ware to bathroom, ensuite and cloaks.
- Rain drench showerheads to shower enclosures.
- Fully tiled floors to bathroom, ensuite and cloaks.
- Shower wall panels to shower enclosures.
- Splash back tiling to wash hand basin.
- Freestanding bath to bathroom.
- Wall hung vanity unit in bathroom and ensuite.
- Designer towel radiators in bathroom and ensuite.
- LED mirror in bathroom, ensuite and cloaks.
- Recessed LED down lighters to ceiling in bathroom and ensuite.

ELECTRICAL

- Smart phone enabled heating system with digital thermostats.
- Doorbell included.
- Solar panels.
- Wiring for EV car charger.
- Smoke and heat detectors.
- Comprehensive range of electrical sockets.
- Connection sockets for BT and TV.
- Cabling for digital and SKY TV.

HEATING

- High efficiency oil fired boiler.
- Smart phone enabled smart technology heating system.

FLOORING

- Carpeting provided throughout all bedrooms, stairs and landings.
- Tiling to kitchen and dining areas.
- Tiling to bathroom floors and splash backs.
- Tiling to cloakroom and utility floors.
- Laminate to lounge and hallway.

INTERNAL DETAILING

- Contemporary internal doors and quality door furniture.
- Chamfered painted skirting boards and architraves.
- Double glazed windows.
- Walls painted throughout in neutral colours.
- Generous electrical specification to include power points and TV points.

EXTERNAL FEATURES

- Maintenance free PVC energy efficient double glazing and Composite front door.
- PVC fascia and soffit boards.
- PVC guttering.
- Bitmac driveways.
- Seeded gardens with paved patio area.
- Timber fencing to rear boundaries.
- External lighting to front and rear doors.
- Outdoor tap.
- All communal areas are to be maintained by a management company, management fee to be confirmed.

WARRANTY

- All homes come with a 10-year structural warranty.

GROUND FLOOR:

ENTRANCE HALL
CLOAKROOM
WC | 2.3m x 1.35m
LOUNGE | 4.07m x 3.56m
KITCHEN | 9.3m x 5.02m Open to:
FAMILY ROOM
UTILITY ROOM | 2.3m x 1.96m

FIRST FLOOR:

MASTER BEDROOM | 3.79m x 3.56m
ENSUITE | 2.53m x 1.24m
BEDROOM 2 | 3.29m x 3.56m
BEDROOM 3 | 3.56m x 3.37m
BEDROOM 4 | 4.14m x 2.71m
BATHROOM | 3.12m x 2.23m

**TYPE A, SITE 1 COASTLANDS INCLUDING GARAGE, SHORE ROAD,
RAIIVLAI REDT RT??**

Coastlands
BALLYHALBERT









TYPE A, SITE 1 COASTLANDS INCLUDING GARAGE, SHORE ROAD, RAIVLAIREDT RT??

Questions you may have.

Which mortgage would suit me best?
How much deposit will I need?
What are my monthly repayments going to be?

To answer these and other mortgage related questions contact Laura on .

Your home may be repossessed if you do not keep up repayments on your mortgage.

We DO NOT charge for initial mortgage consultations. We may charge a fee on completion depending on circumstances. Our typical fee is £250, however, please confirm with Mortgage Consultant at time of appointment. 18163127

Please note that we have not tested the services or systems in this property. Purchasers should make/commission their own inspections if they feel it is necessary.

ULSTERPROPERTYSALES.CO.UK

ANDERSONSTOWN
028 9060 5200

BANGOR
028 9127 1185

CAVEHILL
028 9072 9270

FORESTSIDE
028 9064 1264

NEWTOWNARDS
028 9181 1444

BALLYHACKAMORE
028 9047 1515

CARRICKFERGUS
028 9336 5986

DONAGHADEE
028 9188 8000

GLENGORMLEY
028 9083 3295

RENTAL DIVISION
028 9070 1000

BALLYNAHINCH
028 9756 1155

CAUSEWAY COAST
0800 644 4432

DOWNPATRICK
028 4461 4101

MALONE
028 9066 1929



CWS Properties Ltd; Trading under licence as Ulster Property Sales (Newtownards) Reg. No. NI616437;
Registered Office: 324 Upper Newtownards Road, Belfast BT4 3EX
©Ulster Property Sales is a Registered Trademark