
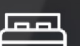





A stunning family home in the highly sought after Mill Village development in Comber

Beautifully presented and decorated with bright and spacious accommodation

- 1 
- 4 
- 3 





Full access to the swimming pool, gym and sauna in the Linen Mill

Off street parking and a professionally landscaped fully enclosed easily maintained garden

Welcoming entrance hall with a guest WC with feature wallpaper

Modern kitchen with a breakfast bar, open plan dining and sliding patio doors to the garden

Useful utility room off the kitchen with plumbing for white goods

Stunning lounge that floods with natural light and a feature electric fire with TV hub built in

Four double bedrooms upstairs – the master with an ensuite shower room

Luxury family bathroom with a separate shower and bath and feature tiling.

Excellent storage in the roof space and one of the bedrooms has built in wardrobes

Very high EPC rating providing low running costs

Still within the 10yr NHBC warranty

Close to the heart of Comber and its amazing array of amenities and quality schools



An Impeccable Manor!

Welcome to this exquisite family home located in the prestigious Mill Village development in Comber. This stunning detached house boasts four bedrooms, three bathrooms, and one stunning reception room, offering spacious and beautifully presented accommodation.

As you step into the property, you are greeted by a welcoming entrance hall leading to a modern kitchen that benefits from open plan dining and sliding patio doors that open to a professionally landscaped garden, ideal for outdoor entertaining or simply relaxing in the sunshine.

The property features a luxurious lounge that is flooded with natural light, creating a warm and inviting atmosphere. The feature electric fireplace with a built-in TV hub adds a touch of elegance to the room, perfect for cosy evenings with family and friends.

Upstairs, you will find four double bedrooms, including a master bedroom with an ensuite shower room for added convenience. The second bedroom benefits from built in wardrobes and the luxury family bathroom is designed with a separate shower and bath, adorned with stylish feature tiling.

Residents of this property will have full access to the swimming pool, gym, and sauna in the nearby Linen Mill, perfect for staying active and healthy without leaving the neighbourhood. Additionally, off-street parking ensures convenience for you and your guests.

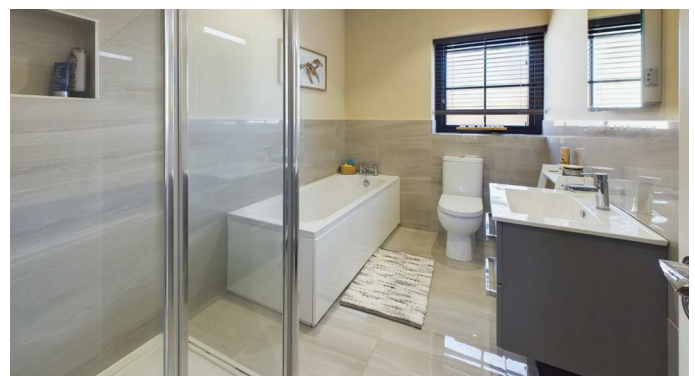
With a very high EPC rating ensuring low running costs and still within the 10-year NHBC warranty, this home offers both comfort and peace of mind. Situated close to the heart of Comber, you will have easy access to a variety of amenities and quality schools, making it an ideal location for families.

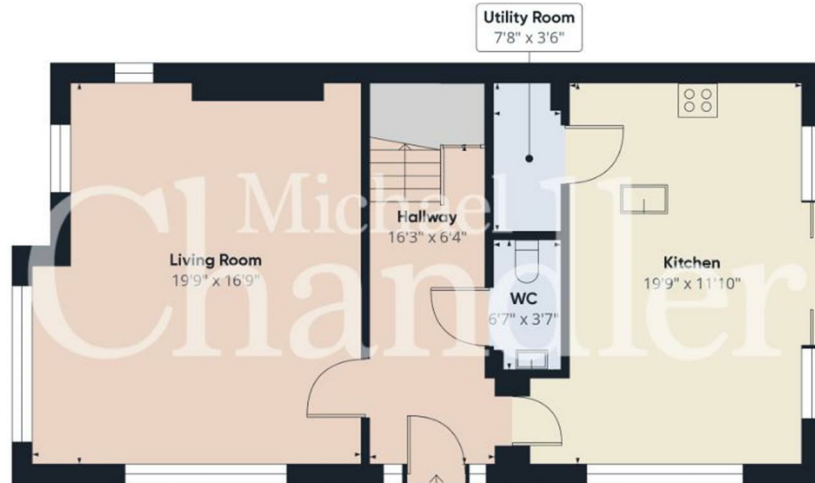
Don't miss the opportunity to make this stunning property your new home in the charming Mill Village development.

Your Next Move...

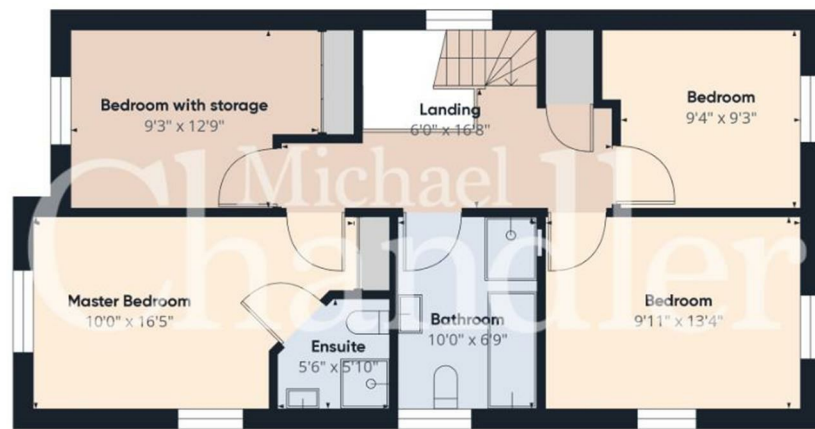
Thinking of selling, it would be a pleasure to offer you a FREE VALUATION of your property.

Asking Price £390,000





Ground floor



Floor 1

Mortgage advice is available from our in-house Mortgage Advisor, you can find out how much you can borrow within minutes!

REQUEST VALUATION

We would be delighted to visit your property and give you a Free Valuation and some helpful advice regarding the sale or rental of your property to you!

513 Ormeau Road, Belfast, BT7 3GU

02890 450 550

property@michael-chandler.co.uk

michael-chandler.co.uk

Michael
Chandler
ESTATE AGENTS