



29 Mill Road, Saintfield, BT24 7FF

Asking price £175,000

Simple Abode are delighted to bring to the market this beautiful three bedroom townhouse within close proximity to the various amenities of Saintfield.

Comprising three bedrooms, open plan living/kitchen with integrated appliances, downstairs WC and family bathroom. The property is in excellent condition throughout and 'move in ready' making it an ideal first time buy or investment.

Property comes with a designated parking space and benefits from oil central heating.

29 Mill Road, Saintfield, BT24 7FF

Asking price £175,000



- Three Bedroom Townhouse
- Downstairs WC
- Oil Fired Central Heating
- Lovely Condition
- Enclosed Rear Garden
- Open Fire
- Off Street Parking
- Close To Amenities

DOWNSTAIRS

Hallway

27'07 x 4'11 (8.41m x 1.50m)

Includes WC

Living Room

17'07 x 14'06 (5.36m x 4.42m)

Open fire

Kitchen

10'07 x 9'09 (3.23m x 2.97m)

Includes integrated cooker, hob, extractor, washing machine, dishwasher and fridge/freezer. Patio door leading to enclosed rear garden

UPSTAIRS

Landing

With built in storage

Bedroom One

10'07 x 9'09 (3.23m x 2.97m)

Bedroom Two

10'04 x 8'09 (3.15m x 2.67m)

Bedroom Three

13'05 x 8'08 (4.09m x 2.64m)

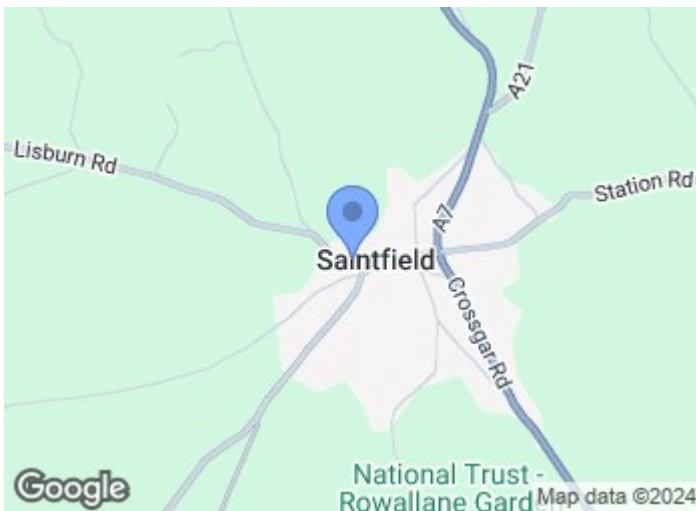
With built in storage

Bathroom

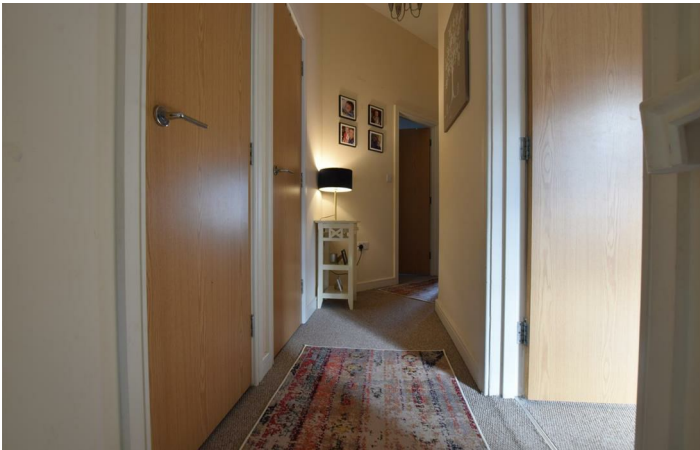
Low flush WC, pedestal wash basin, corner bath and separate walk in shower.

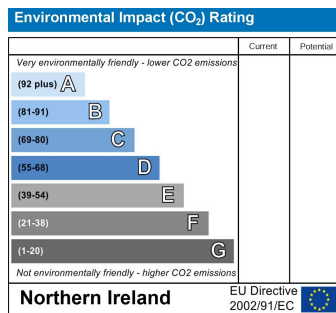
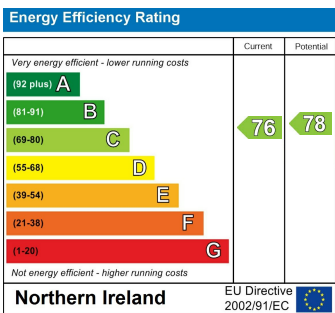
OUTSIDE

Enclosed rear garden. Off street parking.



Tel: 02844898048





These particulars, whilst believed to be accurate are set out as a general outline only for guidance and do not constitute any part of an offer or contract. Intending purchasers should not rely on them as statements of representation of fact, but must satisfy themselves by inspection or otherwise as to their accuracy. No person in this firm's employment has the authority to make or give any representation or warranty in respect of the property.