



29 Elgin Street, Ormeau Road, Belfast, BT7 3AG

Asking Price £199,950

A superb mid terrace house, 29 Elgin Street is only a few minutes walk from the Ormeau Road with its array of cafés, restaurants and entertainment facilities as well as Cherryvale and Ormeau Parks. Local transport links make Belfast City Centre easily accessible and Queen's University and Stranmillis Village are in walking distance.

The property offers spacious, well proportioned accommodation comprising a lounge to the front with large bay window and feature cast iron fireplace, living room to the rear with direct access to enclosed courtyard and fitted kitchen. On the first floor there are two double bedrooms and shower suite, whilst on the top floor there are two further double bedrooms.

The property benefits from a gas-fired central heating system and UPVC double glazing.

An excellent home in a great location.

- Mid Town Terrace
- Two Reception Rooms
- White Shower Suite
- Double Glazing
- Additional Storage Area in The Yard
- Four Bedrooms
- Fitted Kitchen
- Gas Heating
- Enclosed Rear Yard
- Excellent Location 2 minutes Walk From The Ormeau Road

Energy Efficiency Rating		Current	Potential
(92-100)	A		
(81-91)	B		
(69-80)	C		
(55-68)	D	61	65
(39-54)	E		
(21-38)	F		
(1-20)	G		

Not energy efficient - higher running costs

Northern Ireland EU Directive 2002/91/EC



Entrance



Glass panelled front door to entrance porch. Glass panelled inner door. Oak Flooring.

Lounge 13'1 x 10'7 (3.99m x 3.23m)



Into Bay. Granite fireplace, laminate flooring.



Living Room 11'1 x 10'6 (3.38m x 3.20m)



Tiled floor. Glass panelled pvc door to enclosed yard. Tongue and groove ceiling. Spot-lights.

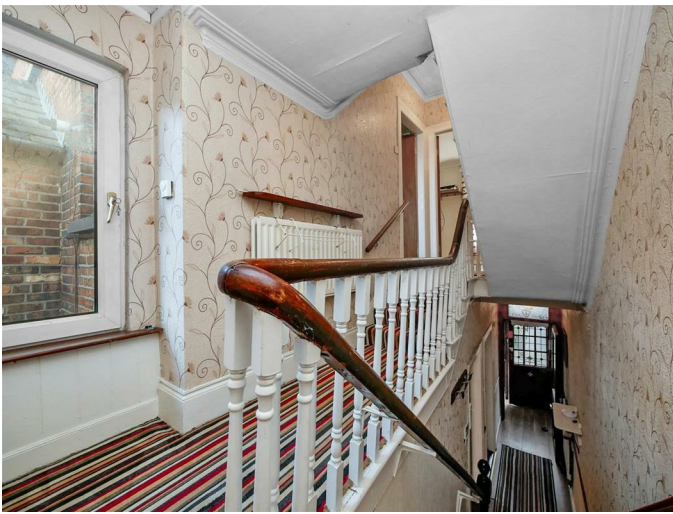
Fitted Kitchen 8'8 x 6'9 (2.64m x 2.06m)



Full range of high and low level units, formica work surfaces, single drainer stainless steel sink unit with mixer taps, part tiled walls, tiled flooring. Tongue and groove ceiling.



First Floor



Bedroom One 13'4 x 10'6 (4.06m x 3.20m)



Laminate flooring. Cornice ceiling.

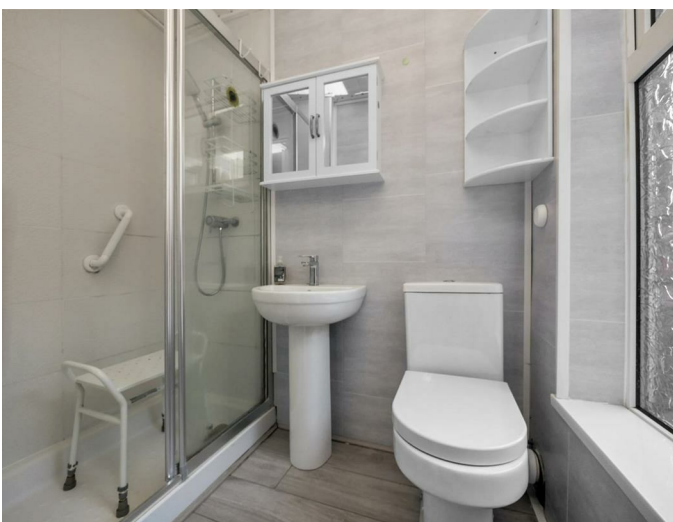


Bedroom Two 11'0 x 8'4 (3.35m x 2.54m)



Laminate flooring. Gas boiler.

White Shower Suite



Comprising shower with chrome shower unit, pedestal wash hand basin, low flush w.c low flush w.c Tongue and groove ceiling.

Second Floor

Bedroom Three 13'4 x 10'8 (4.06m x 3.25m)

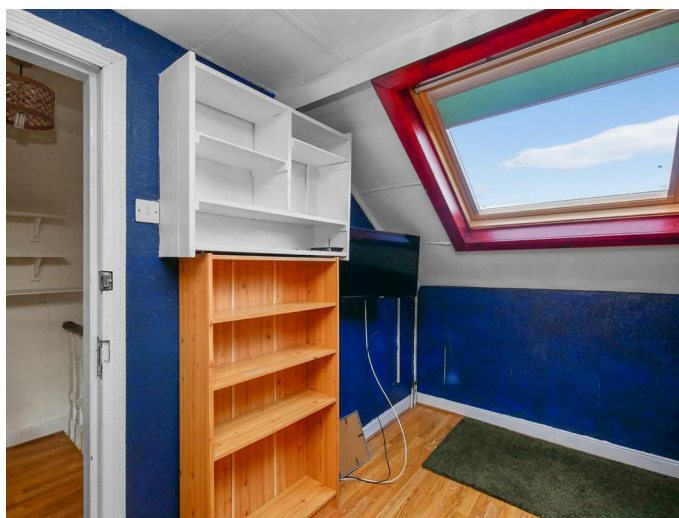


Laminate flooring.

Bedroom Four 10'9 x 7'3 (3.28m x 2.21m)



Laminate flooring.



Outside Front

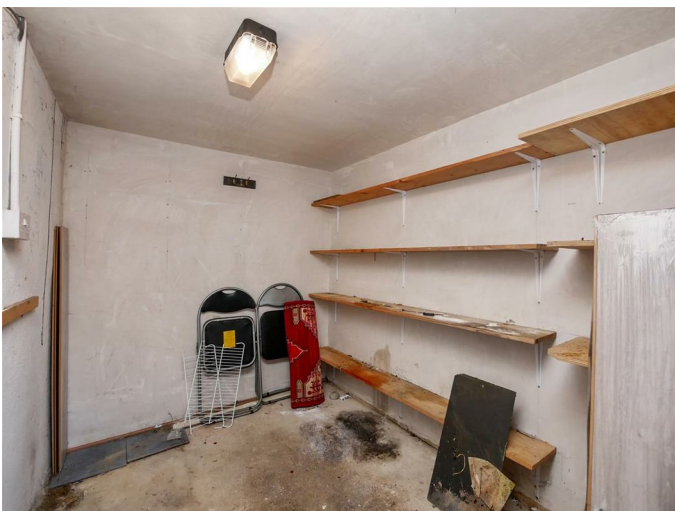


Easily maintained area to the front.

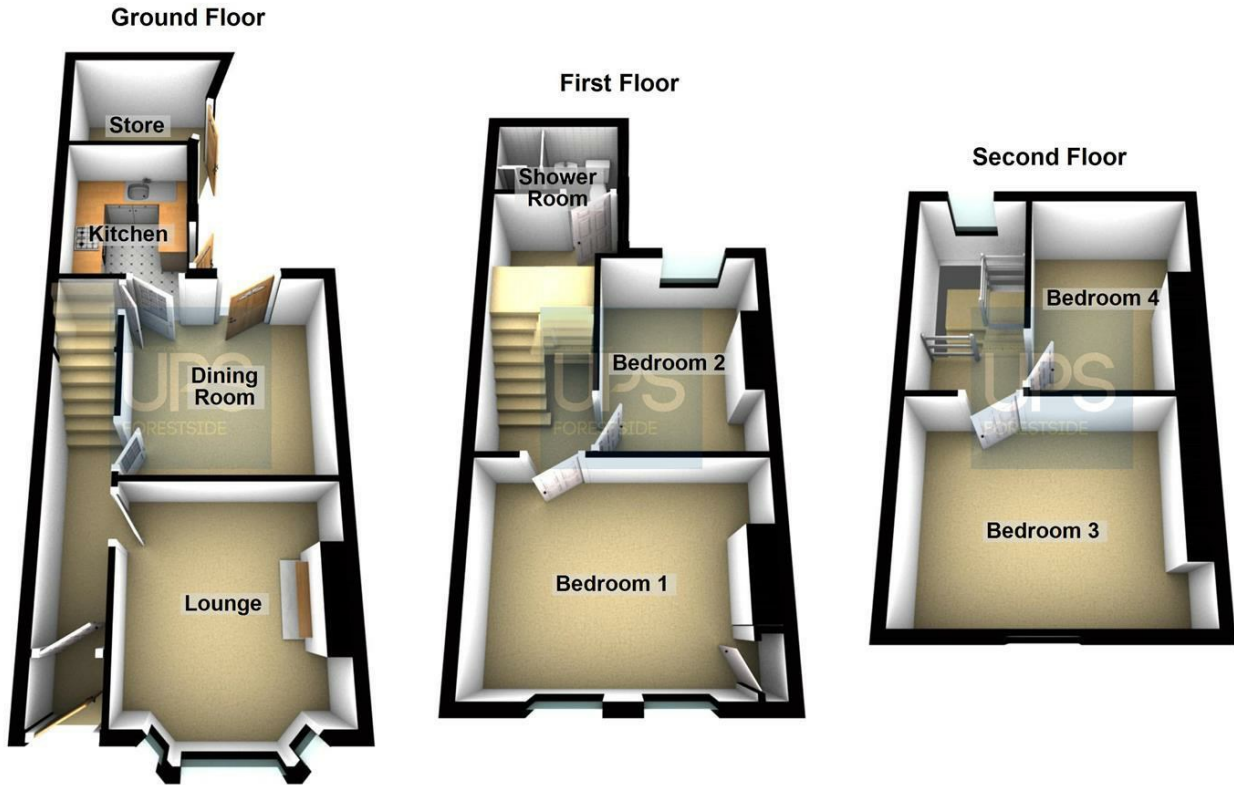
Outside Rear



Enclosed yard. Access and storage facility.

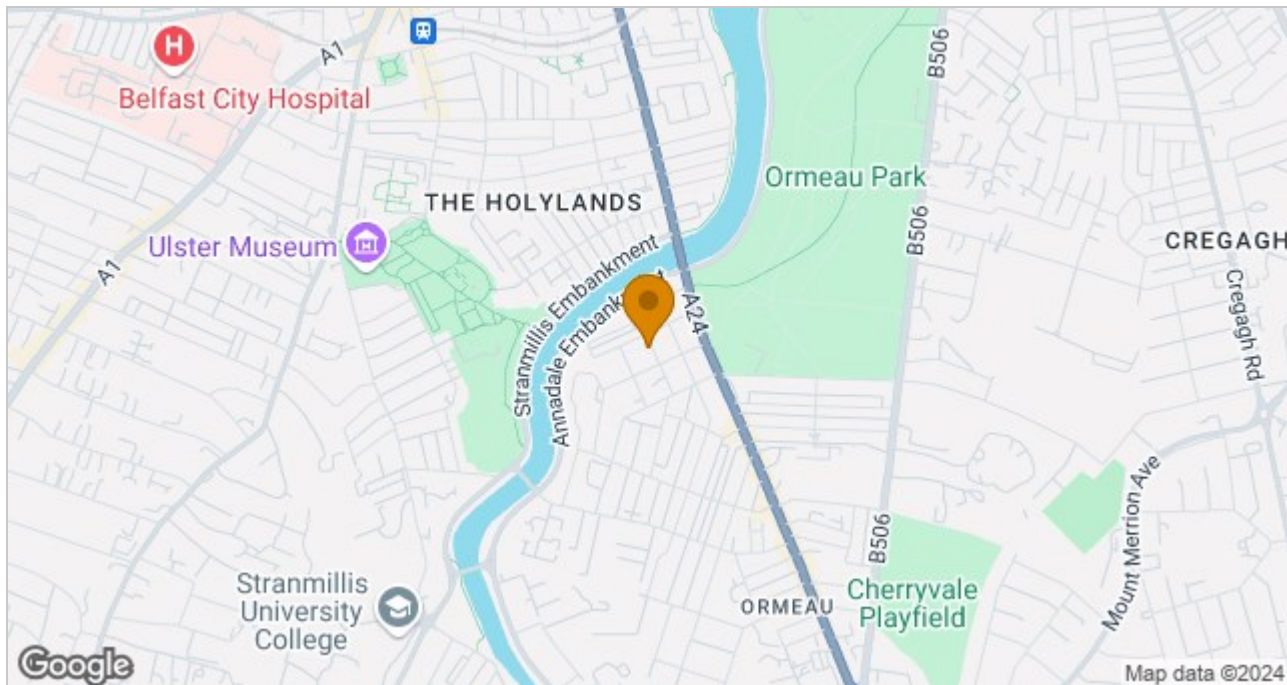


Floor Plan



Please note this floor plan is for marketing purposes only, is not to scale and is to be used as a guide only. No liability is accepted in respect of any consequential loss arising from the use of this plan.
Plan produced using PlanUp.

Area Map



These particulars, whilst believed to be accurate are set out as a general outline only for guidance and do not constitute any part of an offer or contract. Intending purchasers should not rely on them as statements of representation of fact, but must satisfy themselves by inspection or otherwise as to their accuracy. No person in this firm's employment has the authority to make or give any representation or warranty in respect of the property.

ULSTERPROPERTYSALES.CO.UK

ANDERSONSTOWN
028 9060 5200
BALLYHACKAMORE
028 9047 1515
BALLYMENA
028 2565 7700

BALLYNAHINCH
028 9756 1155
BANGOR
028 9127 1185
CARRICKFERGUS
028 9336 5986

CAUSEWAY COAST
0800 644 4432
CAVEHILL
028 9072 9270
DOWNPATRICK
028 4461 4101

FORESTSIDE
028 9064 1264
GLENGORMLEY
028 9083 3295
MALONE
028 9066 1929

NEWTOWNARDS
028 9181 1444
RENTAL DIVISION
028 9070 1000



Forestsides Estates Ltd; Trading under licence as Ulster Property Sales (Forestsides) Reg. No. NI051121;
Registered Office: 9 Upper Crescent, Belfast B17 1NT
©Ulster Property Sales is a Registered Trademark