



234 Jordanstown Road, Newtownabbey, BT37 0NA

£750 Per Month



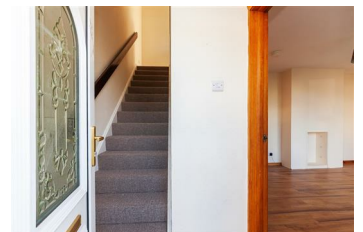
Immaculately presented, three bedroom, mid terrace property with fully enclosed, low maintenance rear garden, conveniently located within the popular Monkstown area of Newtownabbey.

The property comprises entrance hall, lounge, kitchen with informal dining area, rear hall, three well proportioned first floor bedrooms, and bathroom with white three piece suite.

Externally the property enjoys front garden finished in lawn and low maintenance paved rear garden.

Other attributes include gas fired central heating, PVC double glazing and convenient location.

Early viewing highly recommended to avoid disappointment.



INVESTORS IN PEOPLE
We invest in people Gold

PRS Property Redress Scheme

Proudly sponsoring



Awards



WE ARE MACMILLAN.
CANCER SUPPORT