



Bond
Oxborough
Phillips

Changing Lifestyles

18 Trenant Close

Polzeath

PL27 6SW



BRITISH
PROPERTY
AWARDS

2023



GOLD WINNER

ESTATE AGENT
IN WADEBRIDGE
& ROCK



Guide Price - £1,100,000



18 Trenant Close, Polzeath



Welcome to Trenant Close in Polzeath—a remarkable new property on the market, perfectly suited for multi-generational living, with immense potential for those seeking an annexe or investment opportunity.

- Impressive Detached Modern Home
- Six Bedrooms
- Three Bathrooms
- Two Kitchens
- Stunning Views Over Polzeath
- Practical Utility Room
- Private Rear Garden
- Off-Road Parking
- Popular Village Location
- EPC - E
- Council Banding- F



Welcome to Trenant Close in Polzeath—a remarkable new property on the market, perfectly suited for multi-generational living, with immense potential for those seeking an annexe or investment opportunity. This well-maintained residence features six spacious bedrooms and three bathrooms, providing ample space for a growing family or accommodating guests.

The property boasts two fully-equipped kitchens, including an open-plan kitchen/living area ideal for modern living, while the main part of the home features a separate living room, adding a touch of classic charm. Whether you're looking to create a harmonious multi-generational setup or want the flexibility of renting part of the property, Trenant Close has the versatility to accommodate it all.

The property offers stunning sea views and an excellent blend of indoor and outdoor living. Enjoy the privacy of both front and back garden spaces, perfect for family gatherings or relaxing in the Cornish sun. Private parking adds further convenience, and the garage has been thoughtfully divided into a utility area, storage space, and a private office, providing a dedicated work-from-home environment.



In addition, there is a well-built outbuilding currently used as a business space by one of the owners, which could be easily transformed into another office, a summer house, or additional storage.

This property truly has it all, combining spacious living areas, flexibility, and potential for customization. It presents an exciting opportunity for families or investors alike—whether you choose to live in the entire home or let part of it out to guests. A viewing is highly recommended to fully appreciate the unique scope and potential this property offers.

Changing Lifestyles

Polzeath, on Cornwall's north coast, is a charming seaside village famous for its stunning sandy beach and excellent surfing conditions. Surrounded by dramatic cliffs, it offers breathtaking coastal walks and opportunities to spot local wildlife. The village has a variety of amenities, including shops, cafes, and restaurants, making it a great spot for a relaxing beach holiday. Polzeath is also conveniently close to popular attractions like Wadebridge, Port Isaac, and the Camel Estuary, making it an ideal destination for both adventure and relaxation.



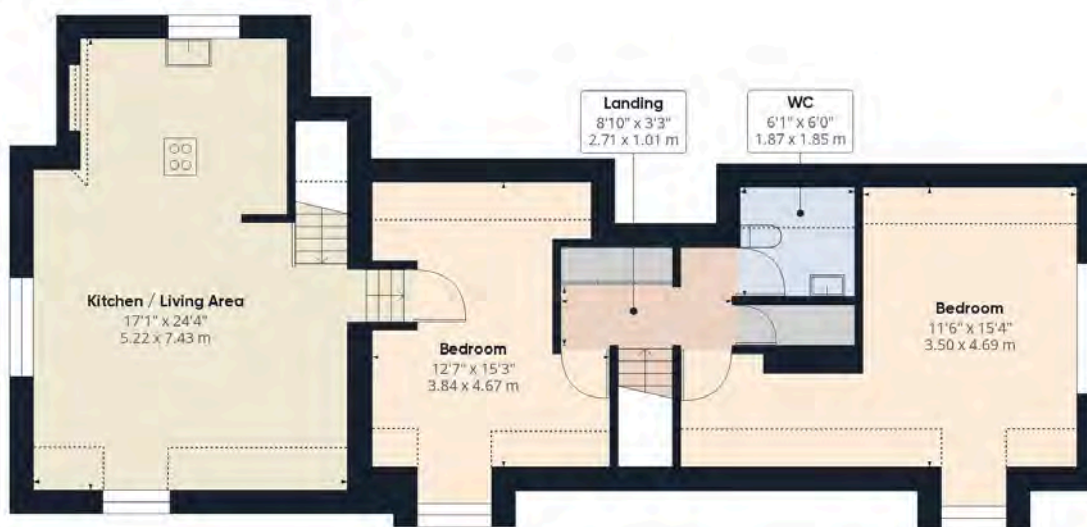
Please do not hesitate to contact the team at Bond Oxborough Phillips Sales & Lettings on **01208 814055** for more information or to arrange an accompanied viewing on this property.

Scan here for our Virtual Tour:





Floor 0 Building 1



Floor 1 Building 1

Have a property to sell or let?

If you are considering selling or letting your home, get in contact with us today on 01208 814055 to speak with one of our expert team who will be able to provide you with a free valuation of your home.

We have the facility to refer purchasers and vendors to conveyancing, mortgage advisors and Surveyors. It is your decision if you choose to deal with any of these companies however should you choose to use them we would receive a referral fee from them for recommending you. We will receive a referral fee between £50 - £300 depending on the company & individual circumstances. We have carefully selected these associates for the quality of their work and customer service levels.

Consumer Protection Regulations: We have not tested any apparatus, equipment, fixtures and fittings or services and so cannot verify that they are in working order or fit for the purpose. References to the Tenure of a Property are based on information supplied by the seller. We have not had sight of the Title Documents. A buyer is advised to obtain verification from their solicitor or surveyor. Floorplans shown are for guidance only and should not be relied upon. Items shown in photographs are NOT included unless specifically mentioned within these details. They may however be able by separate negotiation. You are advised to check the availability of this property before travelling any distance to view. Particulars are produced in good faith to the best of our knowledge and are set out as a general guide only.