



8 Knockbracken Grove, Coleraine, BT52 1XQ

Offers Around £349,950



4



3



3



D66 / C69

Welcome to Knockbracken Grove, Coleraine - a stunning property that offers the perfect blend of space, comfort, and style. This detached house, built in 2005, boasts a generous 2,099 sq ft of living space, providing ample room for all your needs.

As you step inside, you'll be greeted by not just one, not two, but three reception rooms, offering versatility and plenty of space for entertaining guests or simply relaxing with your loved ones. With four bedrooms, a study and three bathrooms, this property ensures that everyone in the family has their own private sanctuary to retreat to.

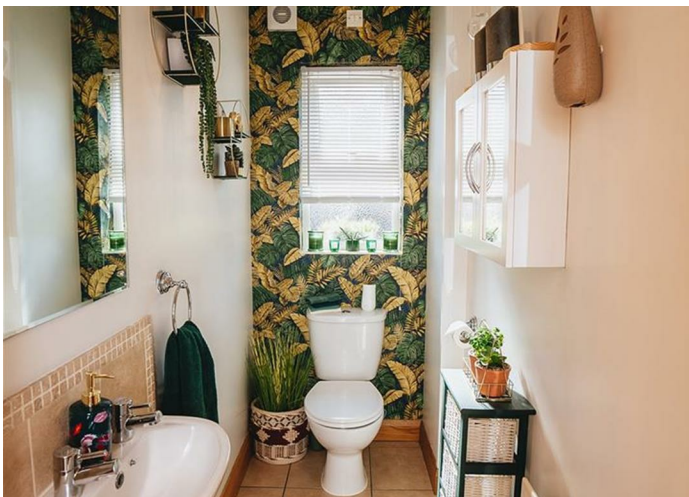
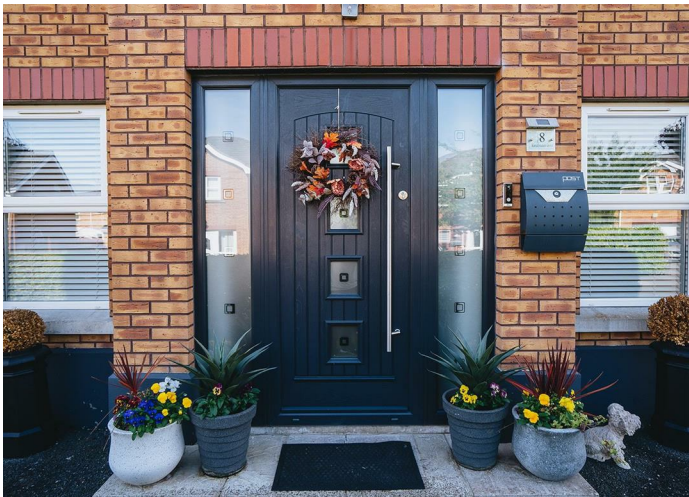
One of the standout features of this property is the parking space it offers - with room for up to four vehicles, parking will never be an issue for you or your guests. Whether you have a growing family or simply love to host gatherings, this convenience is sure to make your life easier.

Located in the charming Knockbracken Grove, just off the Mountsandel Road, this property provides a peaceful retreat from the hustle and bustle of everyday life, while still being conveniently close to all amenities. The property's age falling within the 2000-2009 range ensures modern amenities and a contemporary feel throughout.

Don't miss out on the opportunity to make this house your home. With its spacious layout, ample parking, and ideal location, this property has all the makings of a dream home. Contact us today to arrange a viewing to appreciate the quality and finish that the current owners have installed.

- Detached House with Detached Garage
- 3 x Reception Rooms
- Oil Fired Heating (Recently Fitted Burner)
- Dressing Room Fitted by Rooms
- PVC Double Glazed Windows
- 4 x Bedrooms & A Study
- Exceptional Finish Throughout
- PVC Fascia & Soffits
- Burglar Alarm Installed
- Located Just Off Prestigious Mountsandel Road

For all photos and details, please go to www.amgproperty.com



GROUND FLOOR
1199 sq ft (110.9 sq m.) approx.

