

Tim Martin
—
.co.uk

A rare opportunity to acquire a development site extending to 0.66 of an acre or thereabouts, set on the edge of the village and enjoying pleasing views over the surrounding countryside.

The lands are zoned for housing and are accessed by a private bitmac drive with mains sewer water and electricity already in place to serve at least a portion of the site.

The site, subject to planning, is ideally suitable for six high quality semi-detached or three detached homes.

Potential Residential Development Site
Glasswater Park
Crossgar
BT30 9GU

Price Guide
£225,000

www.timmartin.co.uk
Telephone 028 91 878956

Land & Property Services
Seirbhís Talún & Maoine
THE LAND REGISTRY | CLÁRLAINN NA TALÚN

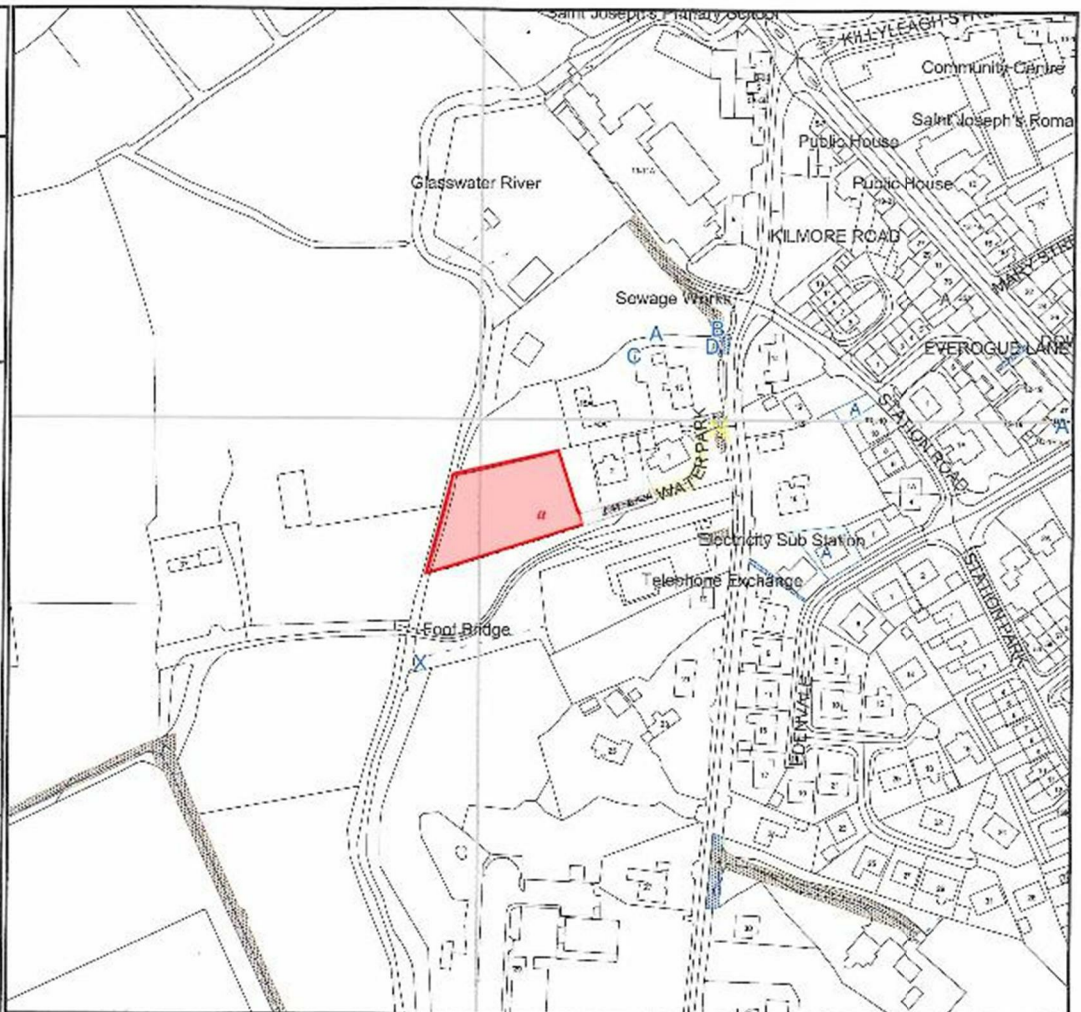
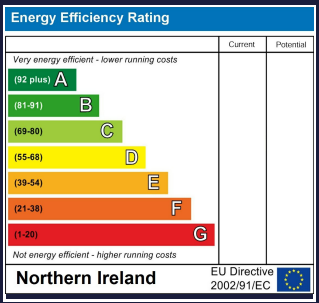
Date: 23 Aug 2024
County: Down
Folio: DN38866
Scale: 1:2500
Our Ref: 2024/579674
Your Ref: mm
Map Ref(s): 20506NW,20506NE,20506SW,
20506SE
Sheet 1 of 1

Key to folio labels:
a - DN38866

This map has been prepared in accordance with the provisions of the Land Registration Act 2002 (LRA 2002) and the Land Registration Rules 2003 (LR Regs 2003). It is a technical drawing and is not a site plan. It is not intended to be used as a site plan. It is not intended to be used as a site plan. It is not intended to be used as a site plan.

This map has been prepared in accordance with the provisions of the Land Registration Act 2002 (LRA 2002) and the Land Registration Rules 2003 (LR Regs 2003). It is a technical drawing and is not a site plan. It is not intended to be used as a site plan. It is not intended to be used as a site plan.

Crown Copyright Reserved

Comber ■
27 Castle Street, Comber, BT23 5DY
T 028 91 8789596

Saintfield
1B Main Street, Saintfield, BT24 7AA
T 028 97 568300

Tim Martin & Company for themselves and for the vendors of this property have endeavoured to prepare these sales details as accurate and reliable as possible for the guidance of intending purchasers or lessees. These particulars are given for general guidance only and do not constitute any part of an offer or contract. The seller and us as agents, do not make any representation or give any warranty in relation to the property. We would recommend that all information contained in this brochure about the property be verified by yourself or professional advisors. Services, fittings and equipment referred to in the sales details have not been tested (unless otherwise stated) and no warranty will be given as to their condition. All measurements contained within this brochure are approximate. Please contact us prior to viewing the property. If there is any point of particular importance to you we would be pleased to provide additional information or make further enquiries. We will also confirm that the property remains available. This is particularly important if you are contemplating travelling some distance to view the property.