

For Sale

Fern Lodge, 9B Revallagh Road, Bushmills,
Co Antrim, BT57 8UG

Offers Over **£750,000**



Property Overview

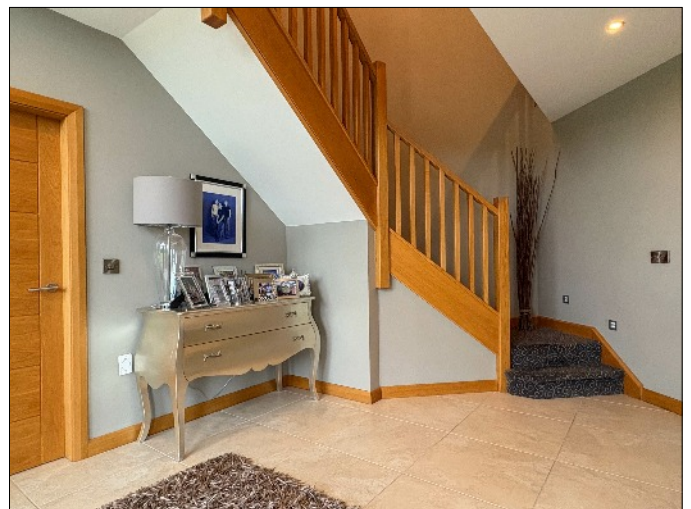
- Excellent Detached Family House extending to over 4000 sq ft
- Situated on a site of approximately 1 acre
- 5 Bedrooms with 3 en-suites and 1 Jack & Jill en-suite, 2 Reception Rooms + Study
- Detached Double Garage with Studio Apartment and Shower Room above (currently used for short term rental)
- Countryside views surrounding the property with extensive laneway and parking area
- Cat5 points throughout the property
- Oil central heating (efficiency condensing boiler)
- Underfloor heating on Ground Floor level
- Property is located 3 miles from Bushmills, 4.1 miles from Portballintrae, 6 miles from Coleraine and 6.2 miles from Portrush
- EPC Rating - C76

Fern Lodge, 9B Revallagh Road, Bushmills BT57 8UG



Entrance Hall:

With feature front door with glass panels to the sides and above, tiled floor, Beam vacuum point, recess and wall lighting, gallery style landing area above.



Fern Lodge, 9B Revallagh Road, Bushmills BT57 8UG

Lounge:

6.06m x 4.17m (19' 11" x 13' 8") With Esse multi fuel stove, tiled floor, television point, wall lights, French glass panel doors to the rear patio area.



Fern Lodge, 9B Revallagh Road, Bushmills BT57 8UG

Family Room:

5.65m x 4.7m (18' 6" x 15' 5") With central feature wall housing Gazco glass fronted gas fire with remote control, recess and wall lighting, tiled floor, Beam vacuum point, storage cupboard. Open plan to:



Fern Lodge, 9B Revallagh Road, Bushmills BT57 8UG



Open Plan Dining Area / Kitchen 7.54m x 6.08m (24' 9" x 19' 11")

Dining Area:

With tiled floor, recess and pendant lighting, uPVC glass panel French doors on both ends of the room – 1 leading to patio area at the rear and 1 leading to decking area at the front of the property.

Fern Lodge, 9B Revallagh Road, Bushmills BT57 8UG

Kitchen:

With Zebrawood units comprising bank of units, eye and low level units - including 2 larder units with pull out drawers and shelved units, 2 sets of saucepan drawers and pull out corner unit, Blanco one and a half bowl stainless steel sink unit with pre rinse spray unit tap, granite work top, integrated AEG dishwasher, 2 Neff ovens, Neff microwaves, space for American style fridge / freezer. Large island unit with 3 sets of saucepan drawers, Stove 5 ring gas hob, CDA island extractor hood, seating for 4 stools. Recess and feature lighting, tiled floor, television point.



Fern Lodge, 9B Revallagh Road, Bushmills BT57 8UG



Rear Porch:

With tiled floor, Beam vacuum point, recess lighting, uPVC glass panel rear door.

Study:

6m x 2.6m (19' 8" x 8' 6") With tiled floor, recess lighting, 4 x Cat5 points. 6m x 2.6m (19' 8" x 8' 6")

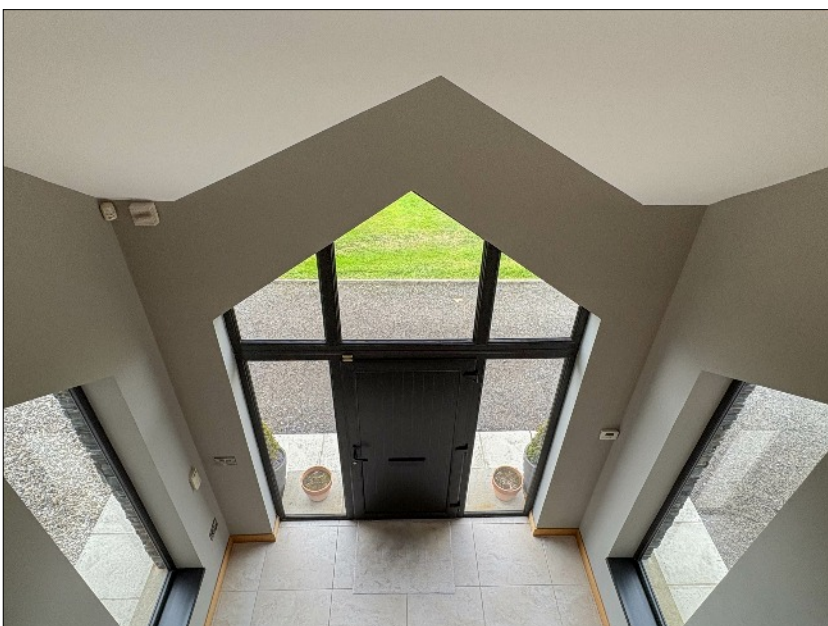
Utility Room:

4.8m x 3.87m (15' 9" x 12' 8") (Max) With low level units, Blanco single drainer stainless steel sink unit, plumbed for washing machine, space for tumble dryer, tiled floor, cloaks cupboard.

Cloakroom:

Comprising floating vanity unit with wash hand basin, w.c., tiled floor, recess lighting, wall mounted touch light mirror.

Fern Lodge, 9B Revallagh Road, Bushmills BT57 8UG



Oak turning staircase with low level lighting leading to

FIRST FLOOR

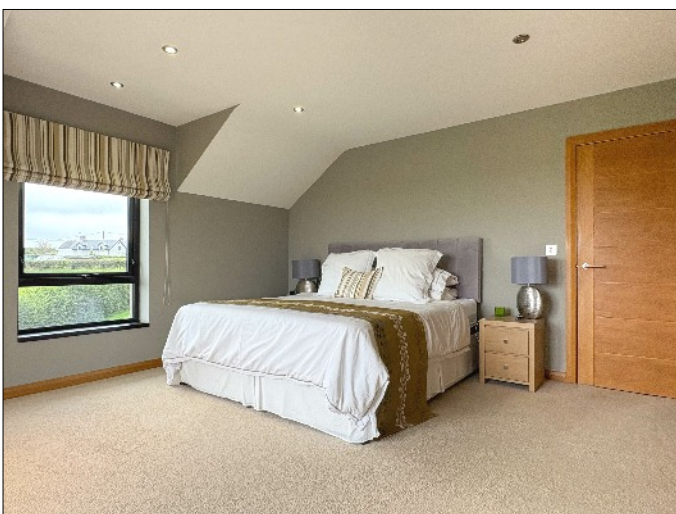
Gallery Style Landing:

With low level and wall lighting, Beam vacuum point, walk-in linen cupboard with sensor light and housing pressurised system. Gallery style landing overlooking entrance hall with glass panels.

Fern Lodge, 9B Revallagh Road, Bushmills BT57 8UG

Primary Bedroom:

4.77m x 4.16m (15' 8" x 13' 8") With recess lighting, television point. uPVC glass panel French doors leading out to:



Fern Lodge, 9B Revallagh Road, Bushmills BT57 8UG

Walk-in wardrobe:

With railings and shelving, sensor light.

Large Decked Balcony:

3.83m x 2.41m (12' 7" x 7' 11") With low level lighting and glass panels.

Primary En-suite:

Comprising Jacuzzi bath with recess shelf above, twin wash hand basin set on vanity unit, w.c., tiled shower enclosure with recess shelf, mains rainfall shower and body shower attachment, tiled walls around amenities, tiled floor, recess lighting, heated towel rail, extractor fan, shaver point, wall mounted mirror with light above.



Fern Lodge, 9B Revallagh Road, Bushmills BT57 8UG

Bedroom 2:

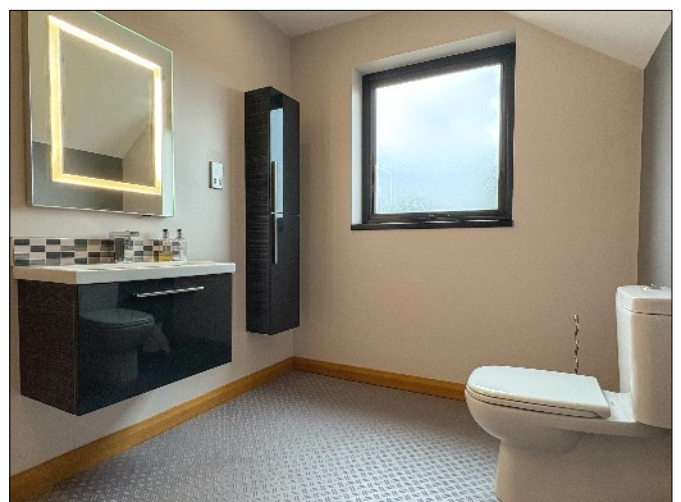
4.1m x 3.86m (13' 5" x 12' 8") With television point, Beam vacuum point.

Walk-in wardrobe:

With railings and shelving, sensor light.

En-suite:

Comprising tiled shower enclosure with mains shower fitting, recess shelf, wash hand basin set on vanity unit, w.c., heated towel rail, recess lighting, extractor fan, shaver point, wall mounted touch light mirror, bathroom cabinet.



Fern Lodge, 9B Revallagh Road, Bushmills BT57 8UG

Bedroom 3:

3.97m x 3.88m (13' 0" x 12' 9") With television point, wall lighting.

Walk-in wardrobe:

With railings and shelving, sensor light.

En-suite:

Comprising tiled shower enclosure with mains shower fitting, recess shelf, wash hand basin set on vanity unit, w.c., heated towel rail, recess lighting, extractor fan, shaver point, tiled floor, fully tiled walls, wall mounted touch light mirror.



Fern Lodge, 9B Revallagh Road, Bushmills BT57 8UG

Bedroom 4:

4.47m x 3.73m (14' 8" x 12' 3") (Average) With television point, Keylite sky window.

Walk-in wardrobe:

With railings and shelving, sensor light.

Jack and Jill En-suite (shared with Bedroom 5):

Comprising tiled shower enclosure with mains shower fitting, recess shelf, wash hand basin set on vanity unit, w.c., heated towel rail, recess lighting, extractor fan, shaver point, tiled floor, fully tiled walls, wall mounted touch light mirror.



Fern Lodge, 9B Revallagh Road, Bushmills BT57 8UG

Bedroom 5:

3.9m x 3.58m (12' 10" x 11' 9") With television point, built-in wardrobe with railings and shelving.



Fern Lodge, 9B Revallagh Road, Bushmills BT57 8UG

Exterior Features

Spacious garden laid in lawn, total site extending to approximately 1 acre, bordered by hedging with trees and shrubs. Outside water tap. Laneway leading to extensive parking with edge lighting. Outside lights around the property. Raised patio area with low level lighting. Decking area with low level lighting and power point. Screened bed around the decking area. Path around the property. PVC oil tank. Septic tank. Second laneway currently used for bins only.

Double Garage:

7.56m x 6.09m (24' 10" x 20' 0") (Max) With Beam vacuum cylinder, boiler, power and lighting, roller doors. Side door with staircase leading to first floor:



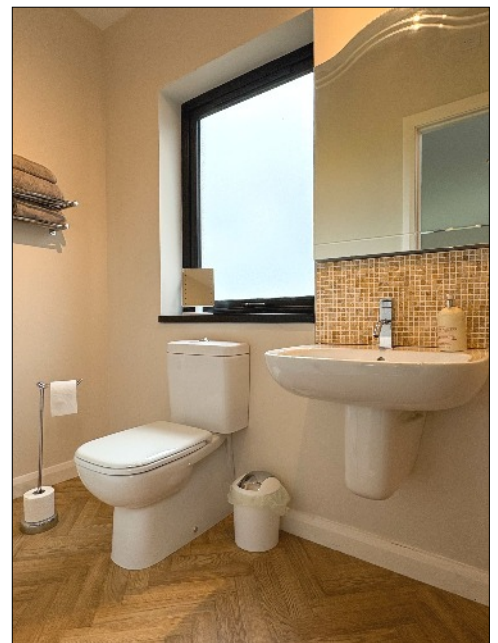
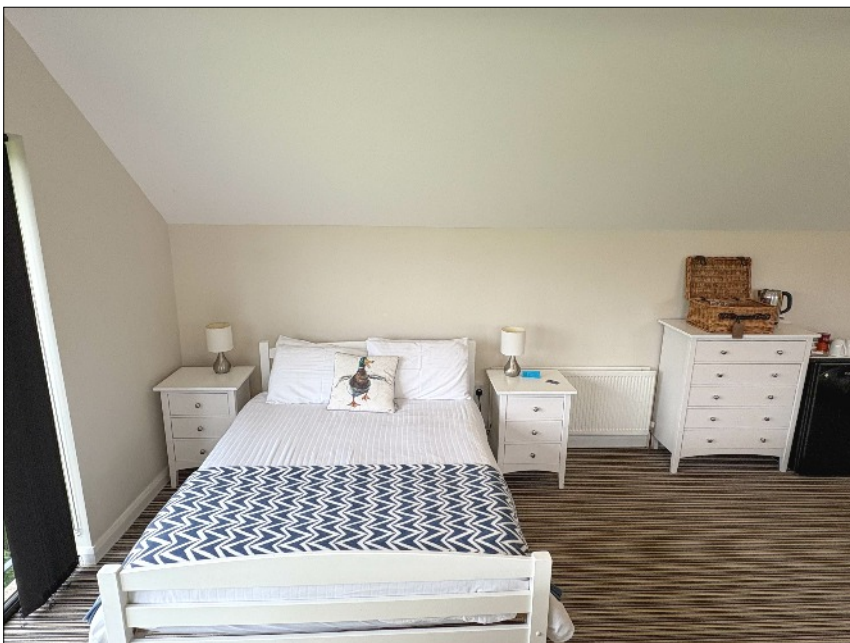
Fern Lodge, 9B Revallagh Road, Bushmills BT57 8UG

Studio Apartment:

7.56m x 6.09m (24' 10" x 20' 0") (including staircase and shower room) with uPVC glass panel French doors and glass side panels open to safety railing, television point, recess lighting, 2 Keylite sky windows.

Shower Room:

With tiled shower enclosure with Redring electric shower fitting, wash hand basin, w.c., extractor fan, shaver point.



Fern Lodge, 9B Revallagh Road, Bushmills BT57 8UG

FLOOR PLANS



GROUND FLOOR

FIRST FLOOR

For illustrative purposes only. Not to scale.

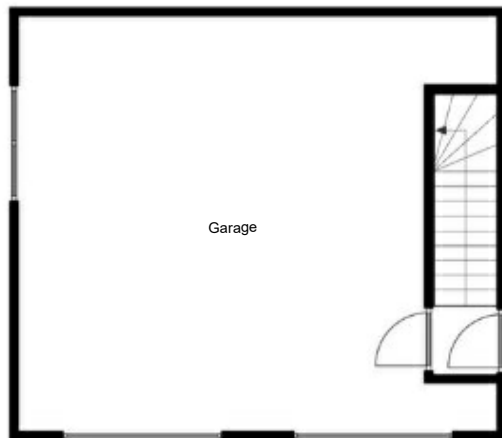
Whilst every attempt has been made to ensure accuracy of the floor plan all measurements are approximate and no responsibility is taken for any error, omission or measurement.

MISREPRESENTATION CLAUSE: McAfee Sales, give notice to anyone who may read these particulars as follows:

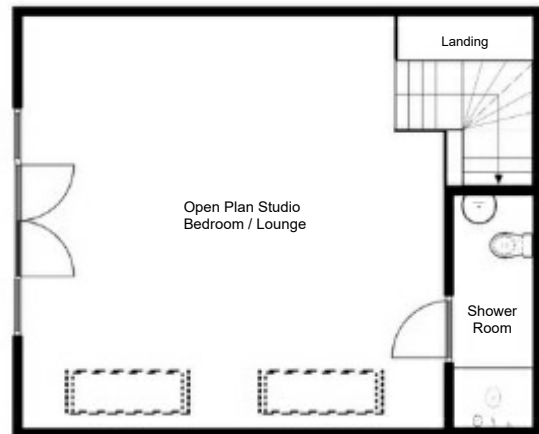
1. The particulars are prepared for the guidance only for prospective purchaser. They are intended to give a fair overall description of the property but are not intended to constitute part of an offer or contract.
2. Any information contained herein (whether in the text, plans or photographs) is given in good faith but should not be relied upon as being a statement of representation or fact.
3. Nothing in these particulars shall be deemed to be a statement that the property is in good condition or otherwise nor that any services or facilities are in good working order.
4. The photographs appearing in these particulars show only certain parts of the property at the time when the photographs were taken. Certain aspects may be changed since the photographs were taken and it should not be assumed that the property remains precisely as displayed in the photographs. Furthermore, no assumptions should be made in respect of parts of the property which are not shown in the photographs.
5. Any areas, measurements or distances referred to herein are approximate only.
6. Where there is reference in the particulars to the fact that alterations have been carried out or that a particular use is made of any part of the property this is not intended to be a statement that any necessary planning, building regulations or other consents have been obtained and these matters must be verified by an intending purchaser.
7. Descriptions of the property are inevitably subjective and the descriptions contained herein are given in good faith as an opinion and not by way of statement of fact.
8. None of the systems or equipment in the property has been tested by McAfee Sales for Year 2000 Compliance and the Purchasers/ Lessees must make their own investigations.

Fern Lodge, 9B Revallagh Road, Bushmills BT57 8UG

FLOOR PLANS



GARAGE



ANNEX

For illustrative purposes only. Not to scale.

Whilst every attempt has been made to ensure accuracy of the floor plan all measurements are approximate and no responsibility is taken for any error, omission or measurement.

MISREPRESENTATION CLAUSE: McAfee Sales, give notice to anyone who may read these particulars as follows:

1. The particulars are prepared for the guidance only for prospective purchaser. They are intended to give a fair overall description of the property but are not intended to constitute part of an offer or contract.
2. Any information contained herein (whether in the text, plans or photographs) is given in good faith but should not be relied upon as being a statement of representation or fact.
3. Nothing in these particulars shall be deemed to be a statement that the property is in good condition or otherwise nor that any services or facilities are in good working order.
4. The photographs appearing in these particulars show only certain parts of the property at the time when the photographs were taken. Certain aspects may be changed since the photographs were taken and it should not be assumed that the property remains precisely as displayed in the photographs. Furthermore, no assumptions should be made in respect of parts of the property which are not shown in the photographs.
5. Any areas, measurements or distances referred to herein are approximate only.
6. Where there is reference in the particulars to the fact that alterations have been carried out or that a particular use is made of any part of the property this is not intended to be a statement that any necessary planning, building regulations or other consents have been obtained and these matters must be verified by an intending purchaser.
7. Descriptions of the property are inevitably subjective and the descriptions contained herein are given in good faith as an opinion and not by way of statement of fact.
8. None of the systems or equipment in the property has been tested by McAfee Sales for Year 2000 Compliance and the Purchasers/ Lessees must make their own investigations.

Fern Lodge, 9B Revallagh Road, Bushmills BT57 8UG

Energy Efficiency Rating

| | Current | Potential |
|--|-----------|-----------|
| Very energy efficient - lower running costs | | |
| A 92 plus | | |
| B 81-91 | | |
| C 69-80 | 76 | 76 |
| D 55-68 | | |
| E 39-54 | | |
| F 21-38 | | |
| G 1-20 | | |
| Not energy efficient - higher running costs | | |

Northern Ireland

EU Directive 2002/91/EC 

Full EPC available on request

OFFICE OPENING HOURS

| | | | |
|-----------|--------|---|-------|
| Monday | 09:00 | - | 17:30 |
| Tuesday | 09:00 | - | 17:30 |
| Wednesday | 09:00 | - | 17:30 |
| Thursday | 09:00 | - | 17:30 |
| Friday | 09:00 | - | 17:30 |
| Saturday | 09:30 | - | 12:30 |
| Sunday | Closed | | |

WEBSITE AND E-MAIL

www.mcafeeproperties.co.uk

coleraine@mcafeeproperties.co.uk

PROPERTY REFERENCE

COL0274 011024/MH

OUR OFFICE LOCATION



mrafee

24 New Row
Coleraine
BT52 1AF



**FOLLOW US
ON FACEBOOK**



Think

FINANCIAL SERVICES

by Clare

- Residential Mortgages
- Re-mortgages
- Self Build Mortgages
- Buy To Let Mortgages
- Holiday Let Mortgages
- Life Cover
- Critical Illness Cover
- Income Protection
- Buildings & Contents Cover
- Landlord Insurance

Contact Clare on 028 7032 8222 / 07739 707 078

Think Financial Services is an Appointed Representative of PRIMIS Mortgage Network. PRIMIS Mortgage Network is a trading name of First Complete Ltd which is authorised and regulated by the Financial Conduct Authority for mortgages, protection insurance and general insurance products.