

Tim Martin
— .co.uk



28 Gorsehill

Moneyreagh

BT23 6XA

Offers Around
£279,950

www.timmartin.co.uk
Telephone 028 91 878956

SUMMARY

Situated in the ever popular Gorsehill development, this detached home is perfect for the growing and established families and is within walking distance of Moneyreagh Primary School, Auld House Pub and restaurant, shop, playground and local churches.

The accommodation is beautifully appointed throughout with the ground floor comprising of a bright and spacious lounge, dining room, fitted kitchen with dining area and sunroom, overlooking the rear gardens. The first floor boasts four excellent sized bedrooms with the principal bedroom enjoying an ensuite shower room and a spacious family bathroom.

The property is fitted with oil fired central heating, uPVC double glazing and enjoys a spacious driveway to the front providing excellent parking for several cars and leads to the integral garage with utility area. Gardens to the rear are laid out in lawn with two paved patio areas, ideal for entertaining family and friends.

Gorsehill is a much sought after area for many families with its convenient location providing ease of access to Comber, Carryduff, Saintfield And Ballygowan together with good public transport and road networks linking the commuter to Belfast city centre, George Best Belfast city airport and hospitals.

FEATURES

- Detached Family Home Situated In The Ever Popular Gorsehill Development
- Four Excellent Sized Bedrooms Including Principal Bedroom Ensuite
- Two Reception Rooms Plus Sunroom
- Fitted Kitchen With Dining Area
- Large Family Bathroom
- Oil Fired Central Heating And uPVC Double Glazing
- Spacious Driveway Leading To Integral Garage With Utility Area
- Enclosed Rear Gardens With Paved Patio Areas Boasting Excellent Entertaining Space
- Within Walking Distance Of Moneyreagh Primary School, Auld House Pub and Restaurant, Shop, Playground And Local Churches
- Excellent Road Networks And Public Transport To Surrounding Towns, Good Choice Of Grammar Schools And Belfast City Centre

Entrance Porch

Glazed uPVC entrance door with matching side panels; tiled floor; glazed uPVC door through to:-

Entrance Hall

Wood laminate floor; corniced ceiling; under stairs storage cupboard; glazed double doors to:-

Lounge

16'0 x 12'11 (4.88m x 3.94m)

Beautiful marble fireplace with matching hearth; wood laminate floor; TV aerial connection point; corniced ceiling.

Dining Room

10'7 x 9'8 (3.23m x 2.95m)

Corniced Ceiling

Kitchen / Dining Area

23'6 x 10'7 (7.16m x 3.23m)

Excellent range of painted finish high and low level cupboards and drawers with matching leaded glass display cupboards incorporating 1½ tub sink unit with mixer taps; integrated Whirlpool electric oven and grill; Hotpoint 4 ring gas hob; concealed extractor unit over; Hotpoint dishwasher; integrated fridge; tiled splashback; tiled floor; formica worktops; recessed spotlights; access to integral garage; glazed double uPVC doors to:-

Sun Room

12'11 x 10'8 (3.94m x 3.25m)

Max Measurements

Wood laminate floor; recessed spotlights; glazed uPVC door to gardens.

First Floor / Landing

Access to roofspace (via slingsby type ladder - partially floored); hotpress with Gledhill hot water tank.

Principal Bedroom

17'2 x 15'4 (5.23m x 4.67m)

Max Measurements

Corniced ceiling; good range of built in bedroom furniture.

En-suite Shower Room

6'9 x 5'9 (2.06m x 1.75m)

Modern white suite comprising separate tiled shower cubicle with Triton electric shower unit and wall mounted telephone shower attachment; fitted sliding shower door; close coupled WC; wall mounted wash hand basin with mono mixer taps and vanity unit under; tiled walls and floor; towel radiator; recessed spotlights.

Bedroom 2

12'9 x 12'0 (3.89m x 3.66m)

Built in wardrobes.

Bathroom

12'0 8'1 (3.66m 2.46m)

Cream suite comprising corner panelled bath with mixer taps; low flush WC; semi-pedestal wash hand basin with mixer taps; tiled shower cubicle with Triton electric shower unit and wall mounted telephone shower attachment; folding shower door; tiled walls and floor; recessed spotlights.

Bedroom 3

10'2 x 8'2 (3.10m x 2.49m)

Bedroom 4

11'5 x 10'0 (3.48m x 3.05m)

Outside

Spacious bitmac driveway providing excellent parking for several cars leading to:-

Integral Garage

19'4 x 12'0 (5.89m x 3.66m)

Roller shutter door; light and power points; space and plumbing for washing machine; glazed uPVC door to side.

Gardens

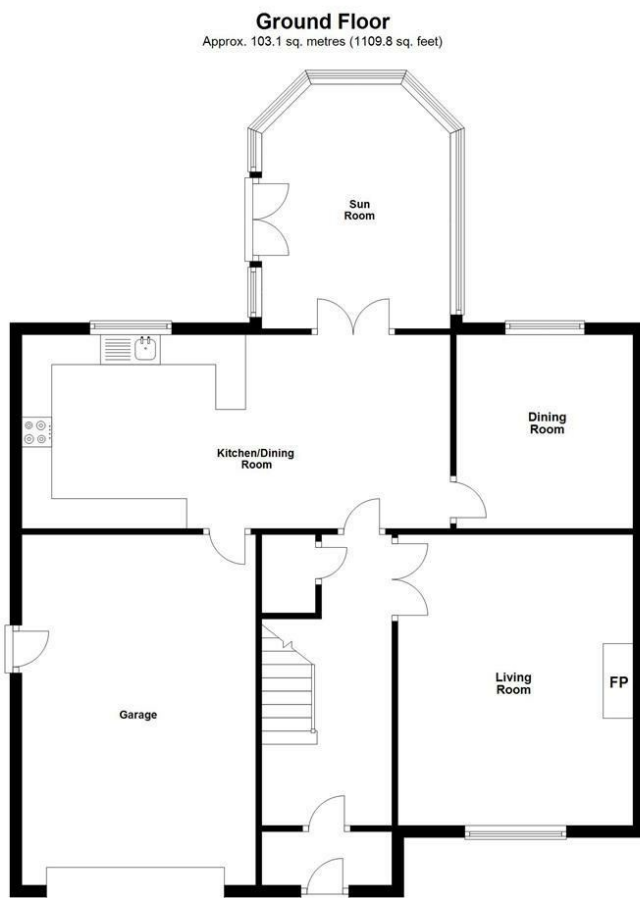
Front gardens laid out in lawn with well stocked flowerbeds; enclosed rear gardens laid out in lawn; paved patio areas; outside light and water tap; PVC oil storage tank.

Boiler House

With Grant Vortex oil fired boiler.

Capital / Rateable Value

£230,000. Rates Payable £1700.65 Per Annum (Approximately)

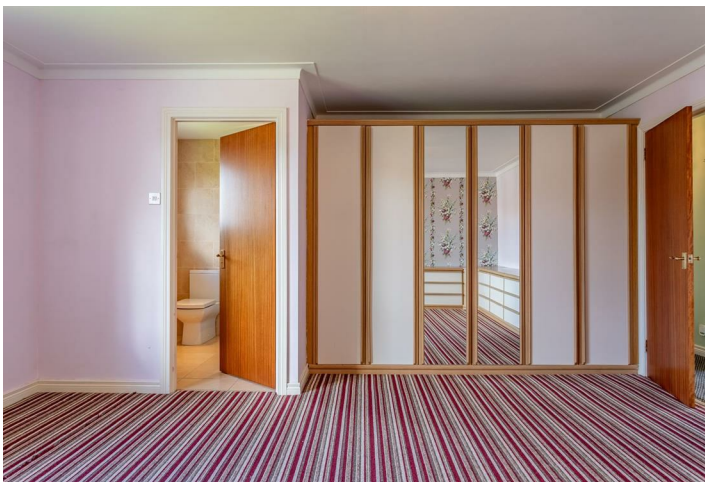


Total area: approx. 185.6 sq. metres (1997.8 sq. feet)

Photography and Floor Plans by houseflyni.co.uk
Plan produced using PlanUp.

28 Gorse Hill, Moneyreagh









Energy Efficiency Rating		Current	Potential
Very energy efficient - lower running costs			
(92 plus) A			
(81-91) B			
(69-80) C			
(55-68) D		63	65
(39-54) E			
(21-38) F			
(1-20) G			
Not energy efficient - higher running costs			

Comber
27 Castle Street, Comber, BT23 5DY
T 028 91 8789596

Saintfield
1B Main Street, Saintfield, BT24 7AA
T 028 97 568300

Tim Martin & Company for themselves and for the vendors of this property have endeavoured to prepare these sales details as accurate and reliable as possible for the guidance of intending purchasers or lessees. These particulars are given for general guidance only and do not constitute any part of an offer or contract. The seller and us as agents, do not make any representation or give any warranty in relation to the property. We would recommend that all information contained in this brochure about the property be verified by yourself or professional advisors. Services, fittings and equipment referred to in the sales details have not been tested (unless otherwise stated) and no warranty will be given as to their condition. All measurements contained within this brochure are approximate. Please contact us prior to viewing the property. If there is any point of particular importance to you we would be pleased to provide additional information or make further enquiries. We will also confirm that the property remains available. This is particularly important if you are contemplating travelling some distance to view the property.