



56 HUNTINGDON HILL, LISBURN, BT28 3GX



An extraordinary and fashionable semi-detached home superbly placed tucked away in this quiet cul de sac development that is of recent construction and offers stylish luxury living space extending to around an impressive 993 sq ft.

Ideally placed between Belfast and Lisburn as well as arterial routes, this home enjoys a higher-than-average energy rating (EPC B-82) and is finished to an exceptional standard throughout. The beautiful accommodation is briefly outlined below.

Three good-sized bedrooms, the principal bedroom with a private en-suite shower room with decorative tiling, and a luxurious white bathroom suite with a separate shower cubicle, as well as a handy storage cupboard on the landing, which completes the first floor.

On the ground floor, there is a spacious and welcoming entrance hall with a beautiful, tiled floor and a large, bright, and airy living room, which has an eye-catching herringbone effect floor and feature bay window. In addition, there is a handy located downstairs W.C. and a luxury fitted kitchen with a range of built-in appliances that is open plan to a sizeable dining space with additional storage and upvc double-glazed double doors leading to the private gardens.

Parallel off-road car parking and a well-maintained, good-sized rear garden with additional brick paviour patio together with gas-fired central heating and fully Upvc double-glazed all add further to this special home.

Energy Efficiency Rating		Current	Potential
Very energy efficient - lower running costs			
(92 plus) A		82	82
(81-91) B			
(69-80) C			
(55-68) D			
(39-54) E			
(29-38) F			
(1-28) G			
Not energy efficient - higher running costs			
Northern Ireland		EU Directive 2002/91/EC	

OFFERS AROUND £219,950

56 HUNTINGDON HILL, LISBURN, BT28 3GX

Key Features

- Extraordinary semi-detached home offering stylish luxury living space within this preferred residential cul-de-sac location ideally placed close to Belfast and Lisburn!
- Three good-sized bedrooms, principal bedroom with private, luxury en-suite shower room.
- Downstairs W.C. (Access to roof-space from first-floor landing providing excellent storage)
- Luxurious white bathroom suite with separate shower cubicle.
- Well maintained good-sized enclosed gardens and off road car-parking.
- Outstanding accommodation extending to around 993 sq ft and superbly placed in this modern development of only 46 homes.
- Large bright and airy living room with beautiful herringbone effect floor and bay window.
- Luxury eye-catching fitted kitchen open plan to sizeable dining space with further added storage and double doors to enclosed gardens.
- Gas fired central heating / Upvc double glazing / Higher-than-average energy rating (EPC B-82)!
- Close to arterial routes, the motorway network and all of the abundance of amenities in nearby Belfast and Lisburn to name a few!





GROUND FLOOR

Pvc front door to;

SPACIOUS AND WELCOMING ENTRANCE HALL

Beautiful tiled floor.

DOWNSTAIRS W.C

Low flush w.c, pedestal wash hand basin, beautiful tiled floor, extractor fan.

LIVING ROOM

11'11 x 17'4

Beautiful Herringbone effect floor, bay window.

LUXURY KITCHEN / DINING AREA

19'1 x 9'3

Excellent range of high and low level units, single drainer stainless steel sink unit, integrated fridge freezer, integrated dishwasher, built-in hob and underoven, stainless steel extractor fan, beautiful partially tiled walls and tiled floor, spotlights, open plan to sizeable dining space with additional storage, and seating Upvc double glazed double doors to gardens.

FIRST FLOOR

LANDING

Storage cupboard - Access to roof-space via a pull-down ladder, floored providing excellent storage, light.

BEDROOM 1

11'11 x 13'1

LUXURY ENSUITE SHOWER ROOM

Shower cubicle, thermostatically controlled shower unit, 1/2 pedestal wash hand basin, beautiful partially tiled walls and tiled floor, spotlights, extractor fan.

BEDROOM 2

10'7 x 10'3

BEDROOM 3

6'9 x 7'1

LUXURIOUS WHITE BATHROOM SUITE

8'1 x 6'6

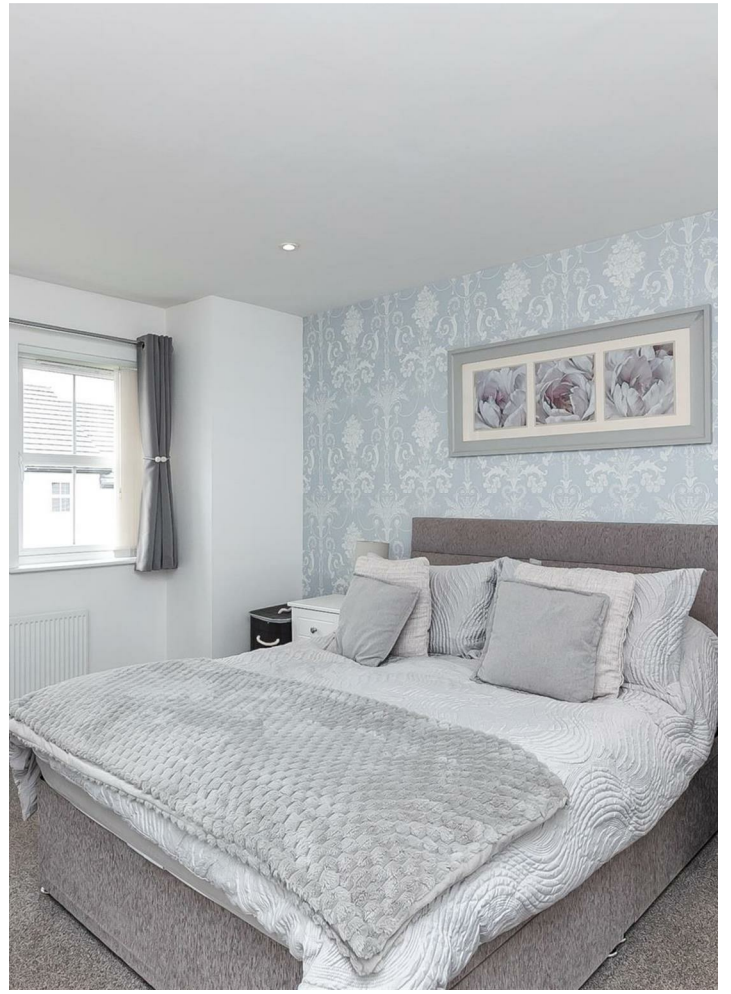
Tiled bath, separate shower cubicle, thermostatically controlled shower unit, low flush w.c, 1/2 pedestal wash hand basin, chrome effect towel warmer, chrome effect sanitary ware, spotlights, extractor fan, beautiful tiled floor, partially tiled walls.

OUTSIDE

Well maintained, enclosed, good sized rear garden, additional brick paviour patio, well maintained front garden, off parallel road carparking to rear.

56 HUNTINGDON HILL, LISBURN, BT28 3GX









56 HUNTINGDON HILL, LISBURN, BT28 3GX



Questions you may have.

Which mortgage would suit me best?
How much deposit will I need?
What are my monthly repayments going to be?

To answer these and other mortgage related questions contact Andersonstown on .

Your home may be repossessed if you do not keep up repayments on your mortgage.

We DO NOT charge for initial mortgage consultations. We may charge a fee on completion depending on circumstances. Our typical fee is £250, however, please confirm with Mortgage Consultant at time of appointment. 18173532

Please note that we have not tested the services or systems in this property. Purchasers should make/commission their own inspections if they feel it is necessary.

ULSTERPROPERTYSALES.CO.UK

ANDERSONSTOWN
028 9060 5200

BALLYHACKAMORE
028 9047 1515

BALLYMENA
028 2565 7700

BALLYNAHINCH
028 9756 1155

BANGOR
028 9127 1185

CARRICKFERGUS
028 9336 5986

CAUSEWAY COAST
0800 644 4432

CAVEHILL
028 9072 9270

DOWNPATRICK
028 4461 4101

FORESTSIDE
028 9064 1264

GLENGORMLEY
028 9083 3295

MALONE
028 9066 1929

NEWTOWARDS
028 9181 1444

RENTAL DIVISION
028 9070 1000



Conor Beirne trading under licence as Ulster Property Sales (Andersonstown)
©Ulster Property Sales is a Registered Trademark