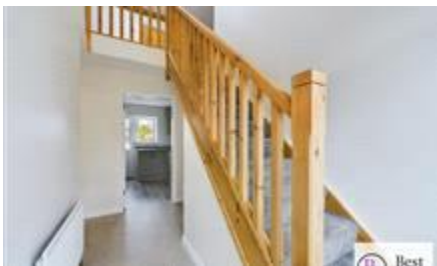





**Best**  
Rental and Property Management,  
Lettings & Sales



Ballymullock Road,  
Larne  
£1,000 pcm

Fabulous house in a semi rural location located between Larne and Ballygally. This is excellent accommodation with a full shower room and versatile layout downstairs, plus three bedrooms (master ensuite upstairs). for 6-12 month lease so not suitable for very long term tenants. References essential.

# Energy Efficiency Rating

	Current	Potential
<i>Very energy efficient - lower running costs</i> (92-100) <b>A</b>		
(81-91) <b>B</b>		
(69-80) <b>C</b>		
(55-68) <b>D</b>		<b>59</b>
(39-54) <b>E</b>	<b>53</b>	
(21-38) <b>F</b>		
(1-20) <b>G</b>		
<i>Not energy efficient - higher running costs</i>		
<b>Northern Ireland</b>	EU Directive 2002/91/EC	

The energy efficiency rating is a measure of the overall efficiency of a home. The higher the rating the more energy efficient the home is and the lower the fuel bills will be.

Reference  
Additional Information

Telephone 02828580400  
RL0118  
Parking options: Off Street  
Garden details: Private Garden

Whilst every effort is made to ensure the accuracy of these details, it should be noted that the measurements are approximate only. Floorplans are for representation purposes only and prepared according to the RICS Code of Measuring Practice by our floorplan provider. Therefore, the layout of doors, windows and rooms are approximate and should be regarded as such by any prospective tenant.