



## Apt 47 Lisburn Square, Lisburn, BT28 1TS

**Price Guide £99,950**

We are pleased to present this excellent two bedroom apartment situated at the ever busy Lisburn Square. Located on the second floor, the spacious accommodation comprises, modern kitchen open plan to living / dining area, two good sized bedrooms (master with en-suite) and white bathroom suite. Further benefits include gas central heating, PVC double glazed windows, lift access and a secure car parking space. With easy access to main arterial routes, viewing is highly recommended.

- Luxury 2nd Floor Apartment
- Two Good Sized Bedrooms (master with ensuite)
- Modern Kitchen Open Plan To Living / Dining Area
- White Bathroom Suite
- Gas Central Heating
- Double Glazed Windows
- Lift Access
- Convenient Location
- Cash Offers Only
- Secure Car Parking Space

Energy Efficiency Rating		Current	Potential
(92-100) A	Very energy efficient - lower running costs		
(81-91) B			
(69-80) C		76	81
(55-68) D			
(39-54) E			
(21-38) F			
(1-20) G	Not energy efficient - higher running costs		

Northern Ireland EU Directive 2002/91/EC

## THE ACCOMMODATION COMPRISES

### COMMUNAL ENTRANCE

Lift access.

### ON THE SECOND FLOOR

#### ENTRANCE

#### HALLWAY

Laminate floor with built in storage

**KITCHEN / LIVING / DINING 23'11" x 17'8" at widest points (7.3 x 5.4 at widest points)**



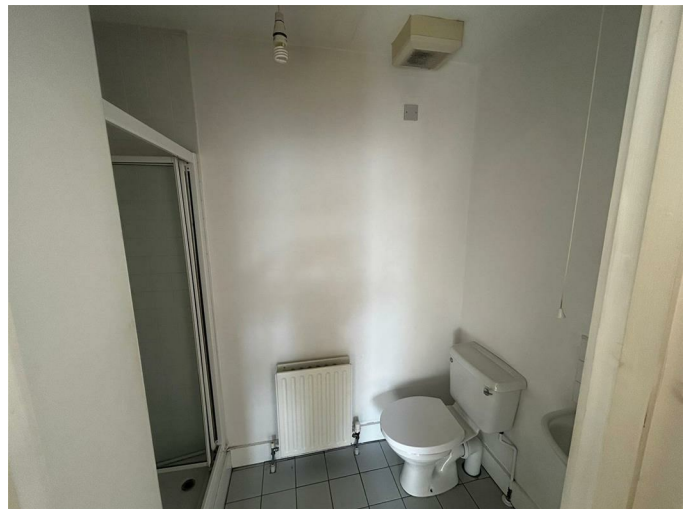
Modern kitchen with a range of high and low level units, built in fridge / freezer, stainless steel sink unit, integrated dishwasher, 4 ring gas hob with built in oven, extractor fan, tiled floor and part tiled walls.



**BEDROOM ONE 17'4" x 10'2" (5.3 x 3.1)**



**ENSUITE**



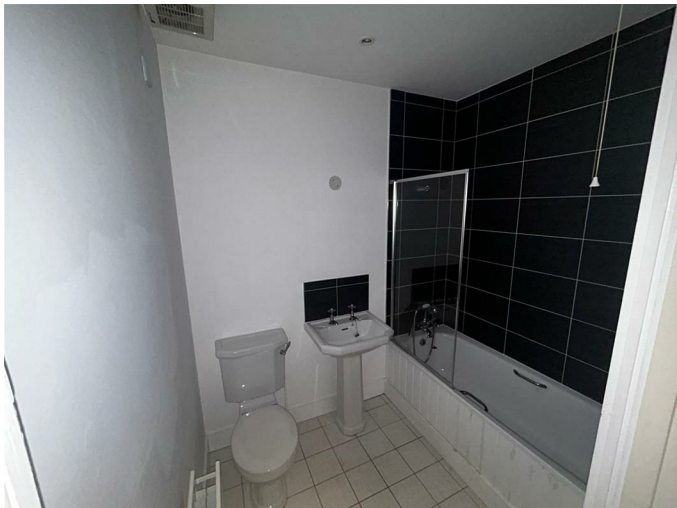
White suite comprising low flush W.C, wash hand basin, shower cubicle with thermostatic shower, tiled floor and part tiled walls.



**BEDROOM TWO 11'1" x 9'10" (3.4 x 3.0 )**



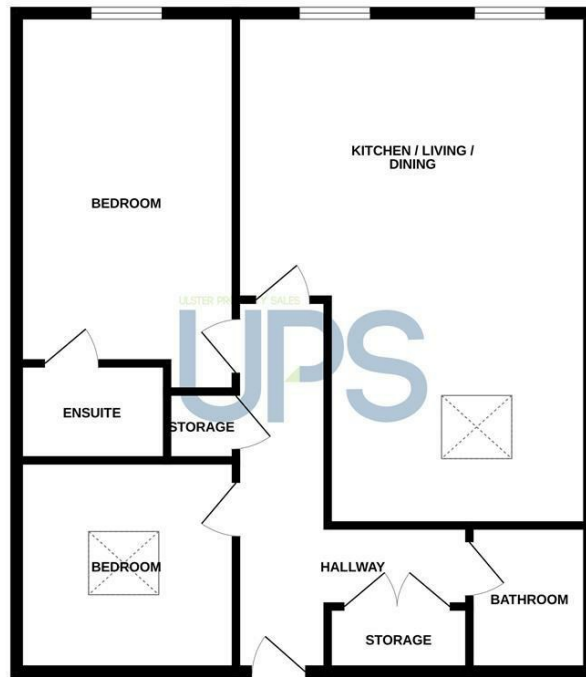
**BATHROOM**



**White suite comprising low flush W.C, pedestal wash hand basin, panel bath, tiled floor and part tiled walls.**

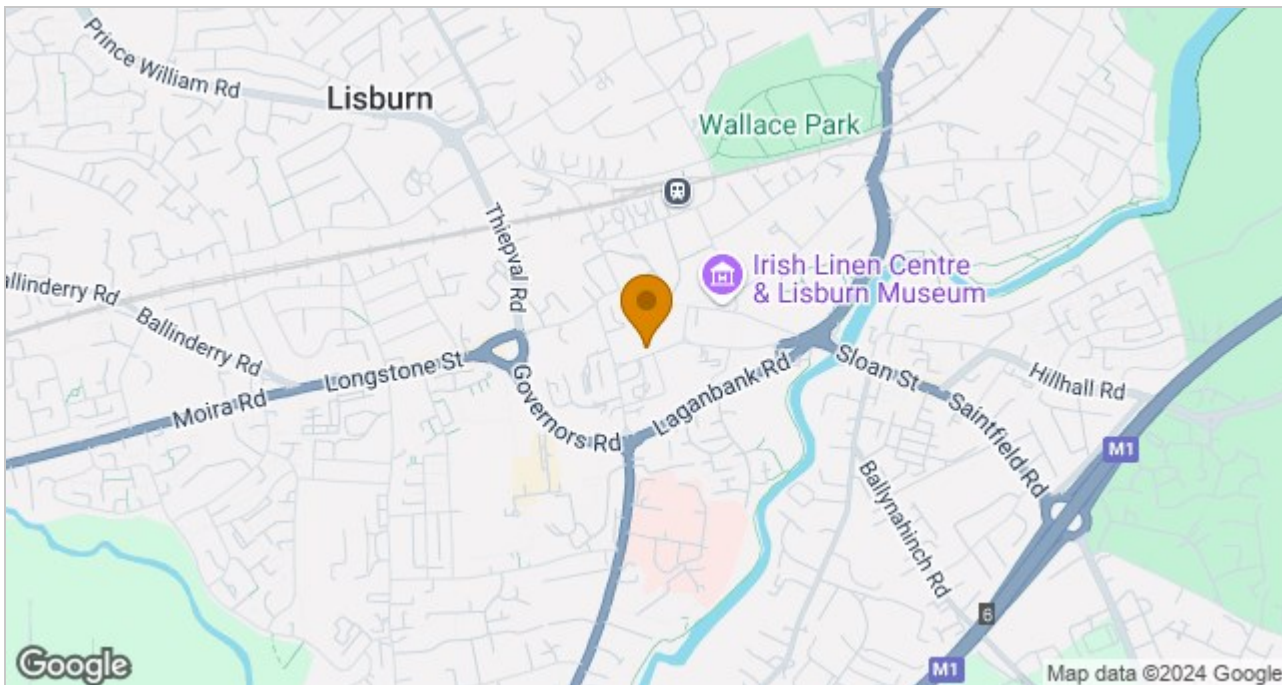
## Floor Plan

### SECOND FLOOR



Whilst every attempt has been made to ensure the accuracy of the floorplan contained here, measurements of doors, windows, rooms and any other items are approximate and no responsibility is taken for any error, omission or mis-statement. This plan is for illustrative purposes only and should be used as such by any prospective purchaser. The services, systems and appliances shown have not been tested and no guarantee as to their operability or efficiency can be given.  
Made with Mapbox ©2024

## Area Map



These particulars, whilst believed to be accurate are set out as a general outline only for guidance and do not constitute any part of an offer or contract. Intending purchasers should not rely on them as statements of representation of fact, but must satisfy themselves by inspection or otherwise as to their accuracy. No person in this firm's employment has the authority to make or give any representation or warranty in respect of the property.

ULSTERPROPERTYSALES.CO.UK

ANDERSONSTOWN  
028 9060 5200

BALLYHACKAMORE  
028 9047 1515

BALLYNAHINCH  
028 9756 1155

BANGOR  
028 9127 1185

CARRICKFERGUS  
028 9336 5986

CAVEHILL  
028 9072 9270

DONAGHADEE  
028 9188 8000

DOWNPATRICK  
028 4461 4101

FORESTSIDE  
028 9064 1264

GLENGORMLEY  
028 9083 3295

MALONE  
028 9066 1929

NEWTOWNARDS  
028 9181 1444

RENTAL DIVISION  
028 9070 1000



John Thompson trading under licence as Ulster Property Sales (Downpatrick)  
©Ulster Property Sales is a Registered Trademark