



Unit 6 Woodhill Commercial Park

140 Ballymena Road, Ballymena, BT43 5QS

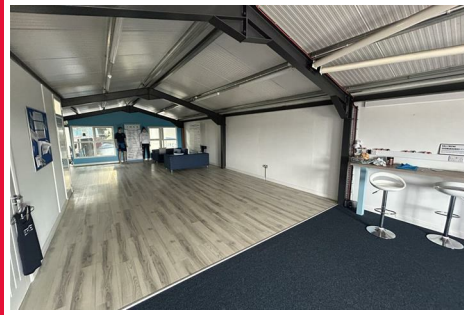
£1,250 Per Month



Unit 6 Woodhill Commercial Park

140 Ballymena Road, Ballymena, BT43 5QS

£1,250 Per Month



Ground Floor Warehouse Area

76 x 22'5 (23.16m x 6.83m)

Rear roller door with beam high of circa 4.5 metres.
Concrete flooring.

Ground Floor Store Area

42 x 22 (12.80m x 6.71m)

Lower roof section.

First Floor Reception / Office Area

51 x 21 (15.54m x 6.40m)

Laminate flooring. Tea Prep area. 2no. showers and WC's.

Concrete Yard (Rear)

Shared concrete yardage with ample turning for heavy good vehicles.

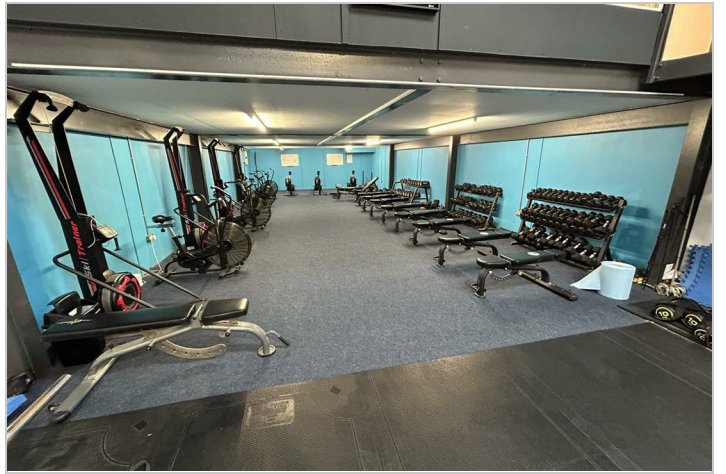
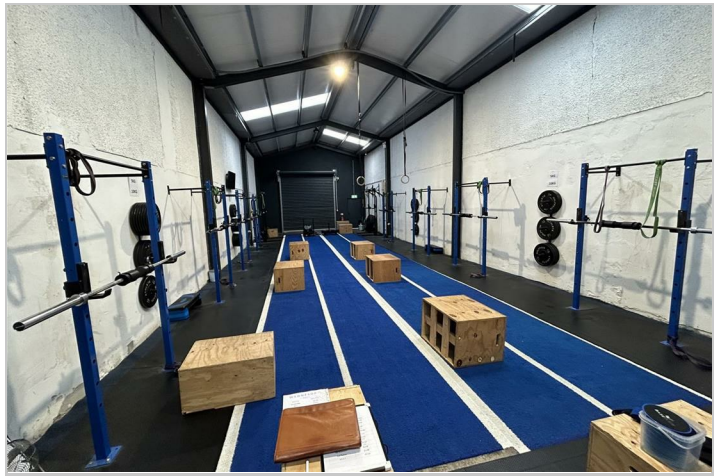
Customer Parking

Ample hardstanding customer parking to the front.

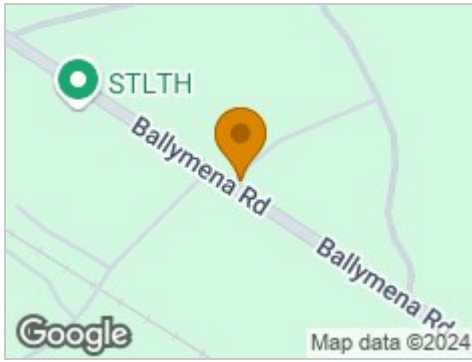
VAT & RATES

VAT: All prices, outgoings etc are exclusive of, but may be subject to VAT.

RATES: We advise that all prospective tenants should make their own enquiries with regards to the rates payable. Current NAV £3,200 pa @ 0.382215
Mid and East Antrim Rates = circa payable £1,223.08 per annum.



Road Map



Hybrid Map



Terrain Map



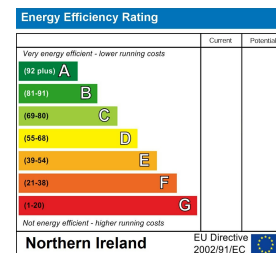
Floor Plan



Viewing

Please contact our Ballymena Office on 02825655733 if you wish to arrange a viewing appointment for this property or require further information.

Energy Efficiency Graph



These particulars, whilst believed to be accurate are set out as a general outline only for guidance and do not constitute any part of an offer or contract. Intending purchasers should not rely on them as statements of representation of fact, but must satisfy themselves by inspection or otherwise as to their accuracy. No person in this firm's employment has the authority to make or give any representation or warranty in respect of the property. Edmondson Estates have not tested any services, equipment, or facilities within the premises and will not be liable, in negligence or otherwise, for any loss arising from the use of these particulars.