


Green Park Lane, Lisburn, County Down, BT27

Asking Price: £249,950
Freehold

 **Reeds Rains**

reedsrains.co.uk

Green Park Lane, Lisburn, County Down, BT27

Asking Price: £249,950 Freehold

Council Tax Band:

EPC Rating: TBC

A truly delightful and most highly presented modern semi-detached family home - nestled in this much admired and highly convenient cul-de-sac location, just off the Belsize Road.

Entrance Hall

Tiled flooring, under stairs storage

WC

Low level WC, wash hand basin.

Living Room

16'5" x 11'3" (5m x 3.43m)

Feature fireplace with stove inset, granite hearth, window seat with built in storage.

Kitchen/ Dining

18' x 13'8" (5.49m x 4.17m)

Luxury fitted range of high and low level cabinets, island unit, Quartz tops, inlaid sink unit, gas hob and electric oven, over head extractor fan, integrated dishwasher,

Landing

Built-in hot press, slingsby ladder to floored loft.

Master Bedroom

13 x 11

Built-in range of robes.

En-suite

Shower cubicle with controlled shower, wash hand basin, low level WC, wall and floor tiling, extractor fan.

Bedroom 2

10'8" x 10'4" (3.25m x 3.15m)

Bedroom 3

10'2" x 7'1" (3.1m x 2.16m)

Family Bathroom Suite

Comprising panelled bath, wash hand basin, low level WC, controlled shower with rain

shower head, wall and floor tiling.

Enclosed and Private To Rear

Recently finished to a very high standard with extensive paving and maintenance free outside entertaining spaces. Raised flower beds.

Car Parking to Front

Pod point EV charging unit, side by side car parking spaces.

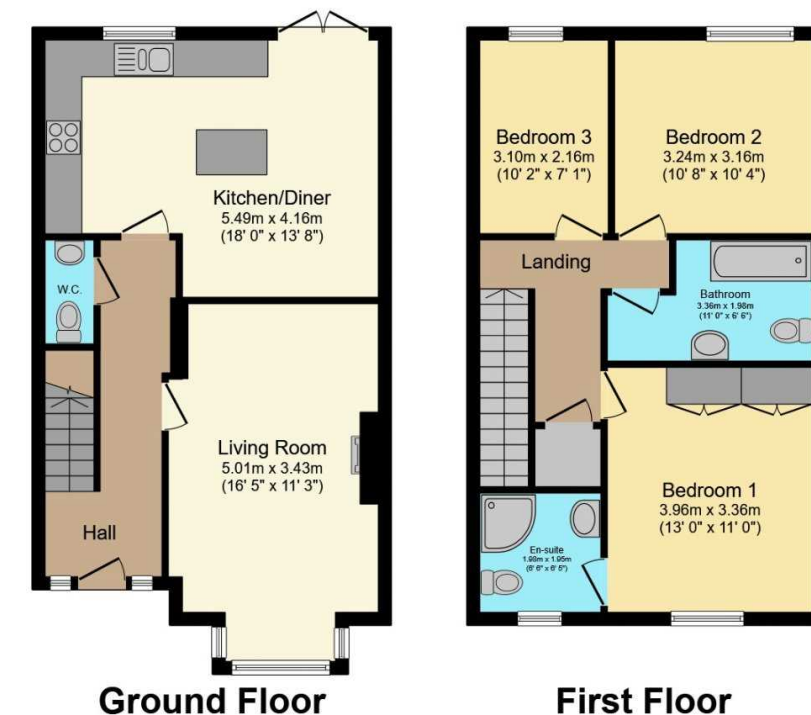
The Reeds Rains branches at 350 Upper Newtownards Road, Ballyhackamore, Belfast, N Ireland BT4 3EX, 18 Main Street, Bangor, Co Down, N Ireland BT20 5AG, Somerset House, 240-242 Ormeau Road, Belfast, Co Antrim, N Ireland BT7 2FZ, 10 High Street, Carrickfergus, Co Antrim, N Ireland BT38 7AF, 8/8A Carnmoney Road, Glengormley, County Antrim, N Ireland BT36 6HN, 14/16 Market Street, Lisburn, County Antrim, N Ireland BT28 1AB and 2 Frances Street, Newtownards, County Down, N Ireland BT23 4JA are operated by Favscos NI Limited which is independently owned and operated under a Licence from Reeds Rains Limited.

All Measurements
All Measurements are Approximate.

Laser Tape Clause
All measurements have been taken using a laser tape measure and therefore, may be subject to a small margin of error.

Floorplan Clause
Measurements are approximate. Not to Scale. For illustrative purposes only.

For full EPC please contact the branch.



Total floor area 101.6 sq.m. (1,094 sq.ft.) approx

This floor plan is for illustrative purposes only. It is not drawn to scale. Any measurements, floor areas (including any total floor area), openings and orientation are approximate. No details are guaranteed, they cannot be relied upon for any purpose and they do not form part of any agreement. No liability is taken for any error, omission or misstatement. A party must rely upon its own inspection(s).
Powered by www.focalagent.com

We may refer you to recommended providers of ancillary services such as Conveyancing, Mortgages, Insurance and Surveying. We may receive a referral fee for recommending their services. You are not under any obligation to use the services of the recommended provider, which may also be an associated company of Reeds Rains.

Other important information which you will need to know about this property can be found at reedsrains.co.uk