

Thornleigh Park, Lisburn, Lisburn and Castlereag, BT28

Asking Price: £179,950
Leasehold

 **Reeds Rains**

reedsrains.co.uk

Thornleigh Park, Lisburn, Lisburn and Castlereag, BT28

Asking Price: £179,950 Leasehold

Council Tax Band:

EPC Rating: F

Charming 3-bedroom semi-detached house boasting a spacious garden, off-street parking, and a garage. This delightful property is perfect for families seeking a cosy yet functional home. Don't miss out on this gem!

Impressive Gardens

Front extensive tarmac car parking spaces, driveway. Enclosed to rear with decked area, patio and stoned area, oil storage tank.

Entrance Hall

Open plan to lounge

Living Room

16'5" x 13'11" (5m x 4.24m)

Feature place with gas fire inset, wooden flooring.

Dining Room

12'1" x 8'8" (3.68m x 2.64m)

Open plan with wooden flooring.

Fitted Kitchen

12'1" x 7'4" (3.68m x 2.24m)

Extensive range of high and low level units, laminate work tops, built-in oven and hob unit, single drainer stainless steel unit, tiled flooring, part tiled walls. Breakfast bar.

Landing

Bedroom 1

14'2" x 9'8" (4.32m x 2.95m)

Built-in robes

Bedroom 2

9'8" x 9'3" (2.95m x 2.82m)

Built-in robes and hot press.

Bedroom 3

10'9" x 6'4" (3.28m x 1.93m)

Built-in robes.

Bathroom

White suite comprising panelled bath, wash hand basin, low level WC, wall and floor Tiling.

Detached Garage/ Office

12'10" x 10'8" (3.9m x 3.25m)

Office adjoining (10'9 x 10'8), Oil fired boiler.

Plumbed for washing machine/

The Reeds Rains branches at 350 Upper Newtownards Road, Ballyhackamore, Belfast, N Ireland BT4 3EX, 18 Main Street, Bangor, Co Down, N Ireland BT20 5AG, Somerset House, 240-242 Ormeau Road, Belfast, Co Antrim, N Ireland BT7 2FZ, 10 High Street, Carrickfergus, Co Antrim, N Ireland BT38 7AF, 8/8A Carnmoney Road, Glengormley, County Antrim, N Ireland BT36 6HN, 14/16 Market Street, Lisburn, County Antrim, N Ireland BT28 1AB and 2 Frances Street, Newtownards, County Down, N Ireland BT23 4JA are operated by Favscos NI Limited which is independently owned and operated under a Licence from Reeds Rains Limited.

All Measurements

All Measurements are Approximate.

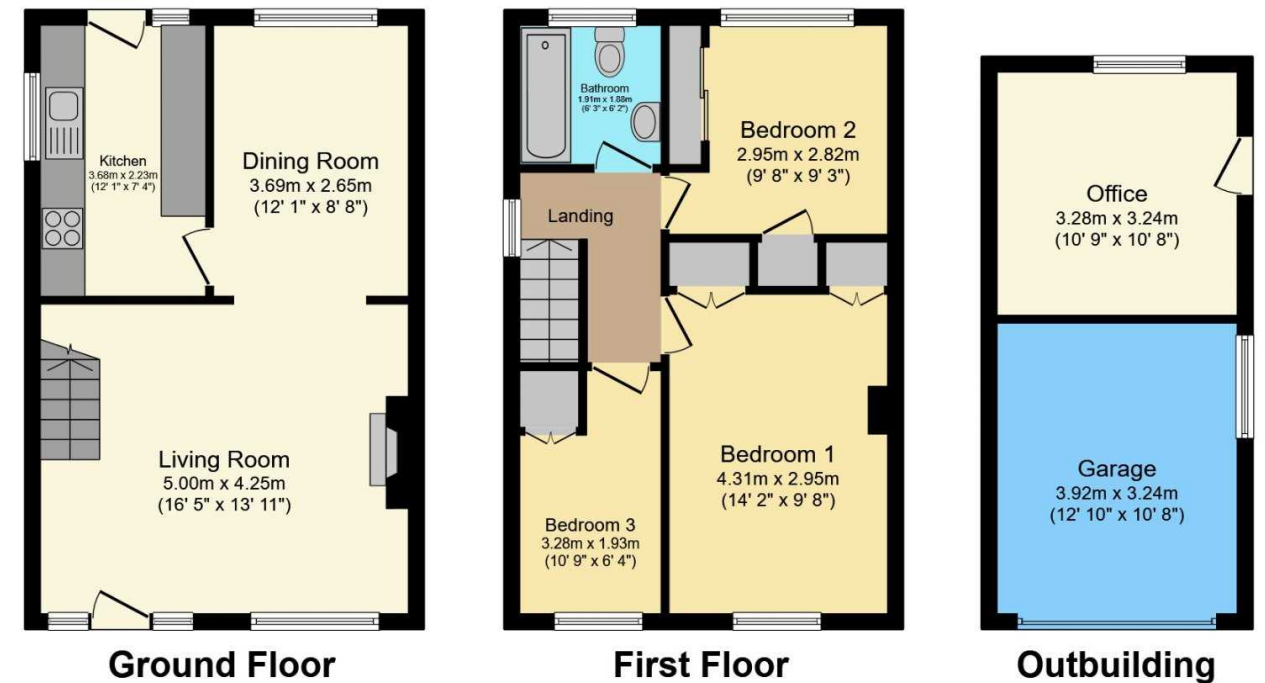
Laser Tape Clause

All measurements have been taken using a laser tape measure and therefore, may be subject to a small margin of error.

Floorplan Clause

Measurements are approximate. Not to Scale. For illustrative purposes only.

For full EPC please contact the branch.



Total floor area 102.3 m² (1,101 sq.ft.) approx

This floor plan is for illustrative purposes only. It is not drawn to scale. Any measurements, floor areas (including any total floor area), openings and orientation are approximate. No details are guaranteed, they cannot be relied upon for any purpose and they do not form part of any agreement. No liability is taken for any error, omission or misstatement. A party must rely upon its own inspection(s). Powered by www.focalagent.com

We may refer you to recommended providers of ancillary services such as Conveyancing, Mortgages, Insurance and Surveying. We may receive a referral fee for recommending their services. You are not under any obligation to use the services of the recommended provider, which may also be an associated company of Reeds Rains.

Other important information which you will need to know about this property can be found at reedsrains.co.uk