

CRAFTED FOR LUXURY & COMFORT

Glenavon Avenue

LURGAN

14 LUXURY COTTAGE
STYLE CHALET
BUNGALOWS

MARC FEGAN
BESPOKE ESTATE AGENT

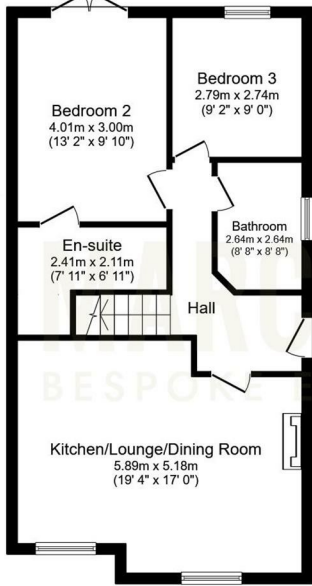
BCL GLENAVON
Building as it should be...

Enquire Now
info@marcfegan.co.uk

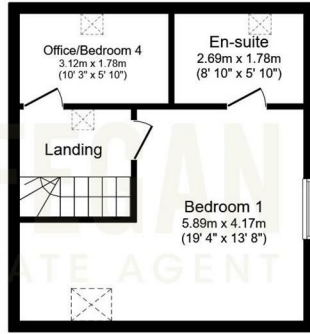


Prices from £239,500

Floor Plans



Ground Floor

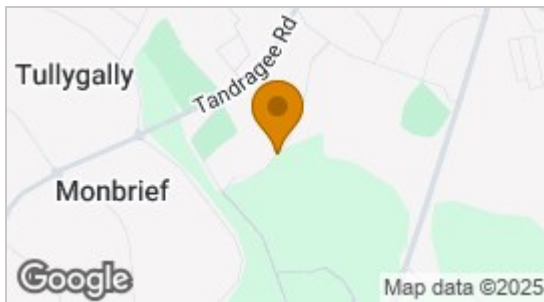


First Floor

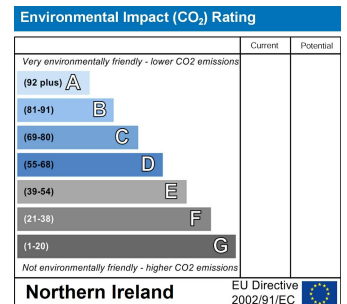
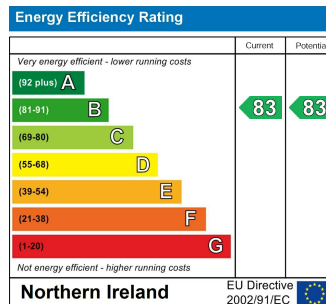


- **GLENAVON AVENUE - 14 LUXURY COTTAGE STYLE CHALET BUNGALOWS.**
- **CIRCA 1300 SQ FEET**
- **FLEXIBLE ACCOMMODATION - 4 BEDROOMS**
- **PICTURESQUE LOCATION YET CONVENIENT TO LOCAL AMENITIES**
- **CRAFTED FOR COMFORT - THESE BEAUTIFUL HOMES ARE DESIGNED TO CATER FOR BOTH YOUNG & OLD**
- **EXCLUSIVE DEVELOPMENT OF JUST 14 NO. SEMI DETACHED HOMES**
- **PRICES STARTING FROM £239,500**
- **LOCATED JUST OFF NEW LINE - TURN ONTO GLENAVON LANE AND THE HOMES ARE LOCATED ON THE RIGHT HAND SIDE JUST BEFORE GORDON PLAYING FIELDS**
- **FIRST 6 HOMES NOW ON RELEASE - GET IN TOUCH FOR MORE INFORMATION**
- **STUNNING SPECIFICATION THROUGHOUT**

Area Map



Energy Efficiency Graph



These particulars, whilst believed to be accurate are set out as a general outline only for guidance and do not constitute any part of an offer or contract. Intending purchasers should not rely on them as statements of representation of fact, but must satisfy themselves by inspection or otherwise as to their accuracy. No person in this firm's employment has the authority to make or give any representation or warranty in respect of the property.

4 William Street, Lurgan, County Armagh, BT66 6JA

Tel: 02838894608 Email: info@marcfegan.co.uk <https://www.marcfegan.co.uk>