

10 SILVERSTREAM CRESCENT

Bangor BT20 3NF

- 3 Bedrooms
- 1+ Reception
- uPVC Double Glazing
- Oil Fired Heating System
- Detached Garage
- Shower Room
- Corner Site
- No Onward Chain

Energy Efficiency Rating		Current	Potential
Very energy efficient - lower running costs			
(92 plus) A			
(81-91) B			
(69-80) C			
(55-68) D		63	66
(39-54) E			
(21-38) F			
(1-20) G			
Not energy efficient - higher running costs			
Northern Ireland		EU Directive 2002/91/EC	

Offers Over £135,000

10 Silverstream Crescent

, Bangor, BT20 3NF



ACCOMMODATION

uPVC double glazed entrance door into ...

ENTRANCE PORCH

ENTRANCE HALL

LOUNGE

13'6" x 12'11" (4.11m x 3.94m)
Open fireplace with Scrabo stone surround and tiled hearth.

DINING AREA

10'0" x 9'9" (3.05m x 2.97m)
Built-in hotpress with insulated copper cylinder and Willis type immersion heater.

KITCHEN

9'7" x 6'6" (2.92m x 1.98m)
Range of high and low level cupboards and drawers with roll edge work surfaces.

Single drainer stainless steel sink unit with mixer taps. Part tiled walls.

STAIRS TO LANDING

BEDROOM 1

12'11" x 9'6" (3.94m x 2.90m)

BEDROOM 2

10'0" x 9'10" (3.05m x 3.00m)

BEDROOM 3

9'10" x 7'3" (2.74m x 2.21m)
Built-in wardrobe.

SHOWER ROOM

Comprising: Corner shower with Triton electric shower. Pedestal wash hand basin. W.C. Part tiled walls.

ROOFSPACE

Slingsby ladder. Floored. Light and over. Fable window.

OUTSIDE

DETACHED GARAGE

15'6" x 11'3" (4.72m x 3.43m)
Double doors, light and power. Oil fired boiler. Plumbed for washing machine.

FRONT & SIDE

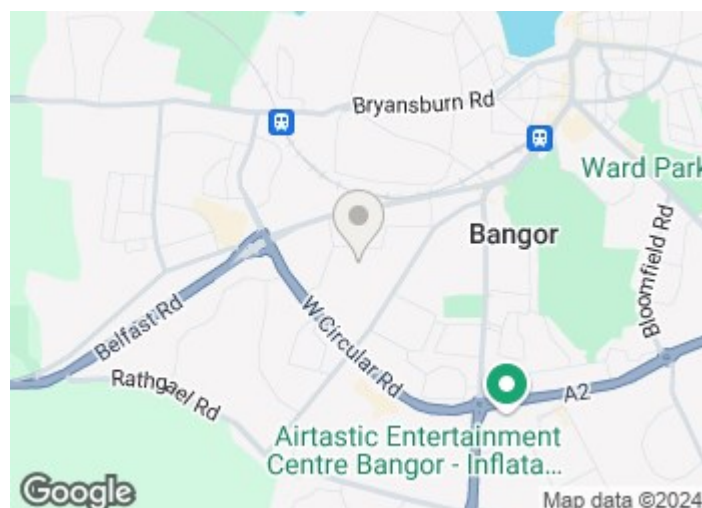
Garden in lawn.

REAR

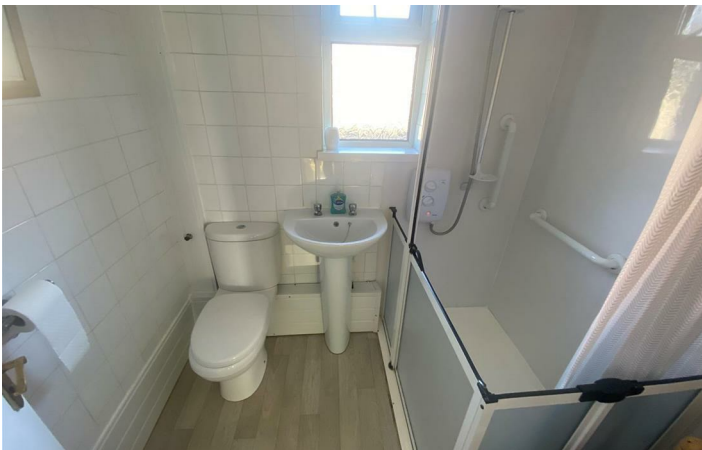
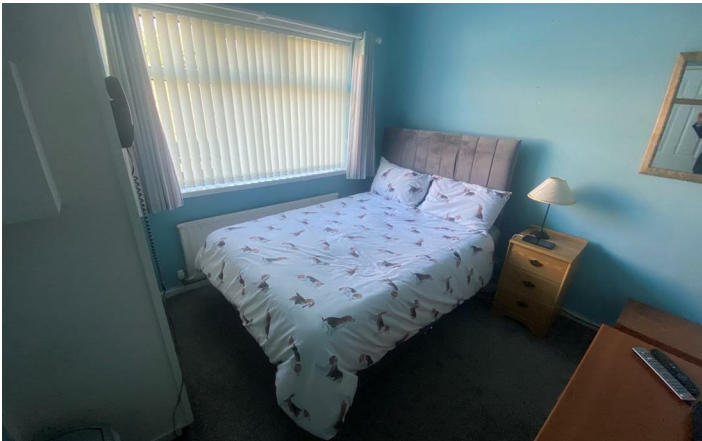
Enclosed yard. Outhouse with light. Sensor light.

WASH ROOM

Comprising: Wash hand basin. W.C.



Directions



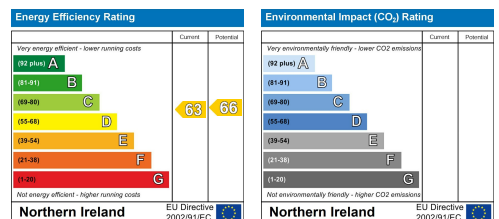
Floor Plan

10, Silverstream Crescent, BANGOR, BT20 3NF



Total Area: 70.4 m² ... 758 ft² (excluding garage)
 All measurements are approximate and for display purposes only

These particulars, whilst believed to be accurate are set out as a general outline only for guidance and do not constitute any part of an offer or contract. Intending purchasers should not rely on them as statements of representation of fact, but must satisfy themselves by inspection or otherwise as to their accuracy. No person in this firm's employment has the authority to make or give any representation or warranty in respect of the property.



ULSTERPROPERTYSALES.CO.UK

- | | | | | |
|---------------------------------|--------------------------------|---------------------------------|------------------------------|----------------------------------|
| ANDERSONSTOWN
028 9060 5200 | BALLYNAHINCH
028 9756 1155 | CAUSEWAY COAST
0800 644 4432 | FORESTSIDE
028 9064 1264 | NEWTOWNARDS
028 9181 1444 |
| BALLYHACKAMORE
028 9047 1515 | BANGOR
028 9127 1185 | CAVEHILL
028 9072 9270 | GLENGORMLEY
028 9083 3295 | RENTAL DIVISION
028 9070 1000 |
| BALLYMENA
028 2565 7700 | CARRICKFERGUS
028 9336 5986 | DOWNPATRICK
028 4461 4101 | MALONE
028 9066 1929 | |



Jonathan Collins trading under licence as Ulster Property Sales (North Down)
 ©Ulster Property Sales is a Registered Trademark