



Bond
Oxborough
Phillips

Changing Lifestyles

50 & 50a Woodland Way,
Gunnislake,
PL18 9JA



Guide Price - £275,000



Changing Lifestyles

01822 600700

50 & 50a Woodland Way, Gunnislake, PL18 9JA



A rare and exciting opportunity to acquire a family home, with an additional one bedroom, self contained annexe, with a garage and parking...

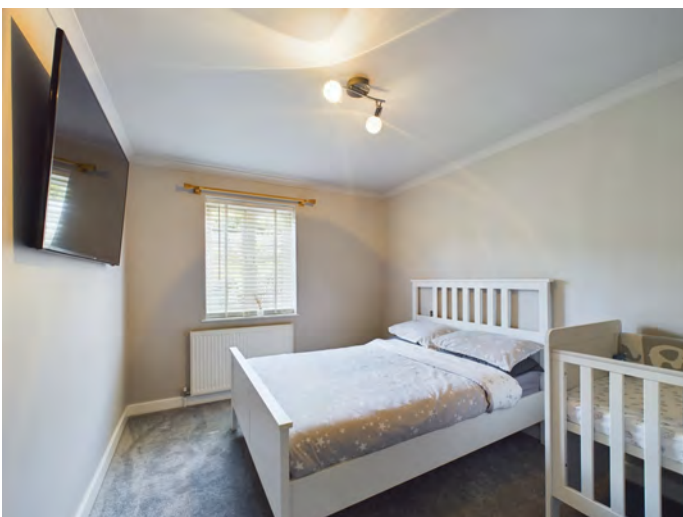
- Fantastic, Niche Opportunity
- Offering a Three Bedroom Home
- Recently Renovated & Beautifully Presented
- Additional One Bedroomed Annexe
- Garage & Off Road Parking
- Conservatory
- Low Maintenance Garden with Koi Pond
- Convenient Location



Divided across three meticulously designed floors, this stunning modern residence has been recently renovated and upgraded by its current owners, resulting in an abode of unparalleled elegance and functionality. Noteworthy features include a conservatory, a generously sized loft room complete with a dressing area, and an annexe that presents a lucrative income opportunity. Viewing this property in person is essential to fully grasp its magnificence!

The ground floor welcomes you with a luminous reception room, highlighted by a feature wooden mantle and patio doors that open to a veranda boasting a charming pond. The expansive, contemporary kitchen-dining room is outfitted with a built-in breakfast bar, provisions for a washing machine and dishwasher, and an integrated electric oven, hob, and extractor fan. Patio doors from the kitchen lead into the conservatory, making it an ideal space for entertaining guests!

Ascending to the first floor, you will find two double bedrooms and a chic bathroom that features a mixer shower over the bath. This floor also houses a dressing room and stairs leading to the second floor. Upon reaching the large loft room, you will encounter a versatile area bathed in natural light from two Velux windows, complemented by practical storage built into the eaves.



Changing Lifestyles

The annexe is entirely self-contained, with its own private entrance on the side of the property. Spanning three levels, the ground floor comprises an open-plan living area and a kitchen space fitted with an electric hob, oven, and extractor fan, along with room for an under-counter fridge and freezer. The first floor accommodates a double bedroom, while the second floor reveals a bathroom with a shower over the bath and a convenient utility area with space for a washing machine and tumble dryer.

The front of the property features a veranda adorned with porcelain tiles and a captivating pond. The rear outdoor area is thoughtfully arranged over two levels: a patio space and an upper level with astro turf.

The property also boasts a garage with an electric door, and a doorway at the rear of the garage leading to a workshop or additional storage room. This meticulously presented modern home offers an exceptional living experience that is both luxurious and practical.



Please do not hesitate to contact
the team at
Bond Oxborough Phillips
Sales & Lettings on
01822 600700
for more information or to
arrange an accompanied viewing
on this property.

Scan here for
our Virtual Tour:





Floor 0 Building 1



Floor 1 Building 1



Have a property to sell or let?

If you are considering selling or letting your home, get in contact with us today on 01822 600700 to speak with one of our expert team who will be able to provide you with a free valuation of your home.

We have the facility to refer purchasers and vendors to conveyancing, mortgage advisors and Surveyors. It is your decision if you choose to deal with any of these companies however should you choose to use them we would receive a referral fee from them for recommending you. We will receive a referral fee between £50 - £300 depending on the company & individual circumstances. We have carefully selected these associates for the quality of their work and customer service levels.

Consumer Protection Regulations: We have not tested any apparatus, equipment, fixtures and fittings or services and so cannot verify that they are in working order or fit for the purpose. References to the Tenure of a Property are based on information supplied by the seller. We have not had sight of the Title Documents. A buyer is advised to obtain verification from their solicitor or surveyor. Floorplans shown are for guidance only and should not be relied upon. Items shown in photographs are NOT included unless specifically mentioned within these details. They may however be able by separate negotiation. You are advised to check the availability of this property before travelling any distance to view. Particulars are produced in good faith to the best of our knowledge and are set out as a general guide only.