



Bond  
Oxborough  
Phillips

*Changing Lifestyles*

2 Glenside Villas,  
Fore Street,  
Landrake,  
Saltash,  
PL12 5DZ



**Guide Price £299,950**





## 2 Glenside Villas, Fore Street, Landrake, Saltash, PL12 5DZ



- Attractive Mid Terraced Cottage
- Offering Three Bedrooms
- Kitchen & Utility Room
- Living Room & Conservatory
- Garage & Off Road Parking
- Sought After Location
- Courtyard Garden & Shed
- Offering No Onward Chain



Tucked away in the peaceful village of Landrake, this delightful 3-bedroom cottage offers the perfect blend of history, charm, and modern convenience. Brimming with character, this home invites you in with a warm and welcoming ambiance from the moment you step through the door.

On the ground floor, you'll find a spacious lounge, a charming kitchen/breakfast room, and a bright and airy conservatory – the perfect spot to unwind. A separate utility room and bathroom add to the home's practicality and comfort. Upstairs, three well-proportioned bedrooms offer cosy retreats, all filled with natural light and full of cottage charm.



The outside space is equally impressive, with rear access and vehicular access leading to a single garage. The expansive garden is a true escape from the world, featuring a rich array of plants, shrubs, and even an apple tree. This well-established garden offers a private haven, perfect for those with a love of nature or gardening. The additional garden sheds provide plenty of storage for tools or outdoor hobbies.

With its blend of historic character, modern amenities, and tranquil outdoor space, this charming cottage is a hidden gem waiting to be discovered. Book a viewing today and explore the peaceful escape this beautiful home has to offer.



# Changing Lifestyles

Landrake is a sought after village only 4 miles from Saltash and easily commutable to Plymouth. The village boasts a superb primary school, pub, village hall, church and shop. Bus services, Rural countryside abounds with lovely walks.

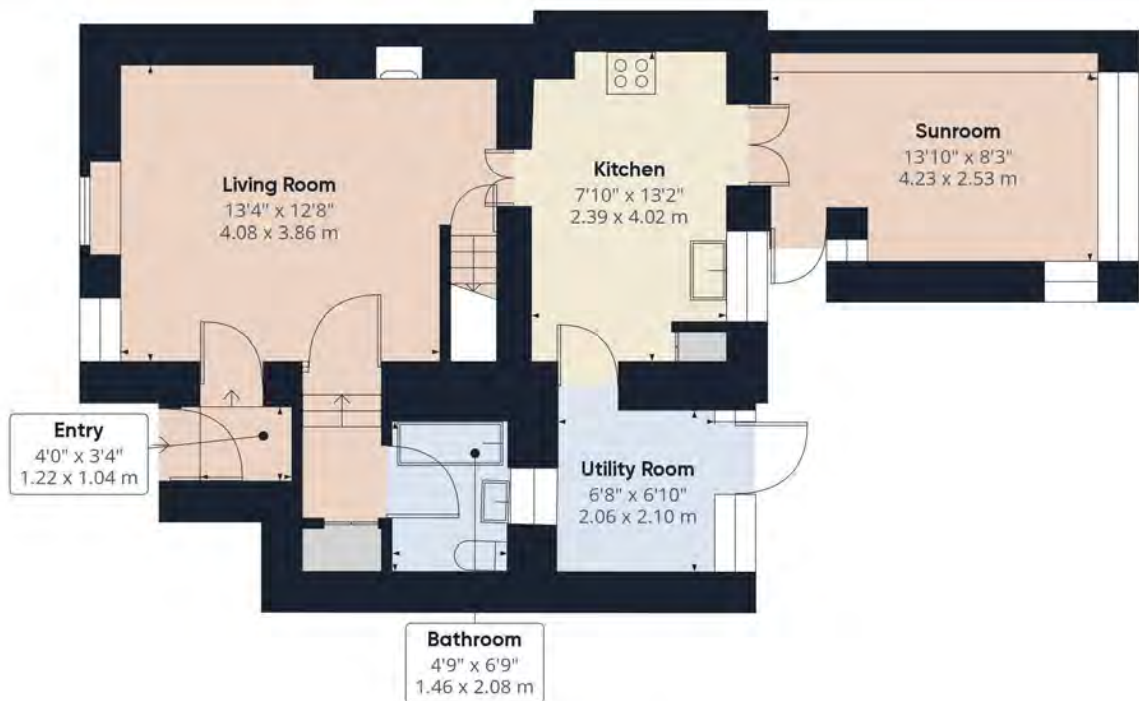
Saltash is a picturesque town that lies just across the River Tamar from Plymouth and is often referred to as the "Gateway to Cornwall". The town centre itself provides many shops and the doctors, dentists, library and leisure centre are all close by. There are four primary schools and a secondary school, along with a local health centre and many places of worship. South East Cornwall boasts many waterside villages such as St Germans and Cargreen, all within easy commuting distance to Saltash and the City of Plymouth.



Please do not hesitate to contact the team at Bond Oxborough Phillips Sales & Lettings on **01822 600700** for more information or to arrange an accompanied viewing on this property.

Scan here for our Virtual Tour:





## Have a property to sell or let?

If you are considering selling or letting your home, get in contact with us today on 01822 600700 to speak with one of our expert team who will be able to provide you with a free valuation of your home.

We have the facility to refer purchasers and vendors to conveyancing, mortgage advisors and Surveyors. It is your decision if you choose to deal with any of these companies however should you choose to use them we would receive a referral fee from them for recommending you. We will receive a referral fee between £50 - £300 depending on the company & individual circumstances. We have carefully selected these associates for the quality of their work and customer service levels.

Consumer Protection Regulations: We have not tested any apparatus, equipment, fixtures and fittings or services and so cannot verify that they are in working order or fit for the purpose. References to the Tenure of a Property are based on information supplied by the seller. We have not had sight of the Title Documents. A buyer is advised to obtain verification from their solicitor or surveyor. Floorplans shown are for guidance only and should not be relied upon. Items shown in photographs are NOT included unless specifically mentioned within these details. They may however be able by separate negotiation. You are advised to check the availability of this property before travelling any distance to view. Particulars are produced in good faith to the best of our knowledge and are set out as a general guide only.