


Jocelyn Avenue, Belfast, County Antrim, BT6

Offers Over: £129,950

 Reeds Rains

reedsrains.co.uk

Jocelyn Avenue, Belfast, County Antrim, BT6

Offers Over: £129,950

EPC Rating: E

Superb Mid Terrace Home.

GROUND FLOOR

Entrance Hall

A welcoming entrance hall with PVC front door and laminate flooring.

Living/Dining Room

A beautiful open plan living and dining space, with bay window, ceiling spots, laminate flooring and under-stair storage cupboard.

Kitchen

11' x 6'8" (3.35m x 2.03m)

A modern galley style kitchen with a good range of high and low level units, 1.5 drainer with mixer tap, integrated electric hob and oven, stainless steel extractor hood, and breakfast bar, and has been finished with a tiled floor and ceiling spots. The kitchen has also been plumbed for a washing machine.

FIRST FLOOR

Bedroom One

13'7" x 10'2" (4.14m x 3.1m)

An excellent double bedroom with carpet and an outlook to the front.

Bedroom Two

9'10" x 8'11" (3m x 2.72m)

An additional double room with carpet and an outlook to the rear.

Bathroom

9'5" x 6'9" (2.87m x 2.06m)

A modern and fully tiled bathroom suite, with a low flush wc, basin with mixer tap and a P shaped bath with overhead shower unit.

OUTSIDE

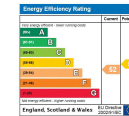
On the outside of the property, there are is a small garden to the front laid in pebble stones, and a good sized rear yard.

The Reeds Rains branches at 350 Upper Newtownards Road, Ballyhackamore, Belfast, N Ireland BT4 3EX, 18 Main Street, Bangor, Co Down, N Ireland BT20 5AG, Somerset House, 240-242 Ormeau Road, Belfast, Co Antrim, N Ireland BT7 2FZ, 10 High Street, Carrickfergus, Co Antrim, N Ireland BT38 7AF, 8/8A Carnmoney Road, Glengormley, County Antrim, N Ireland BT36 6HN, 14/16 Market Street, Lisburn, County Antrim, N Ireland BT28 1AB and 2 Frances Street, Newtownards, County Down, N Ireland BT23 4JA are operated by Favscio NI Limited which is independently owned and operated under a Licence from Reeds Rains Limited.

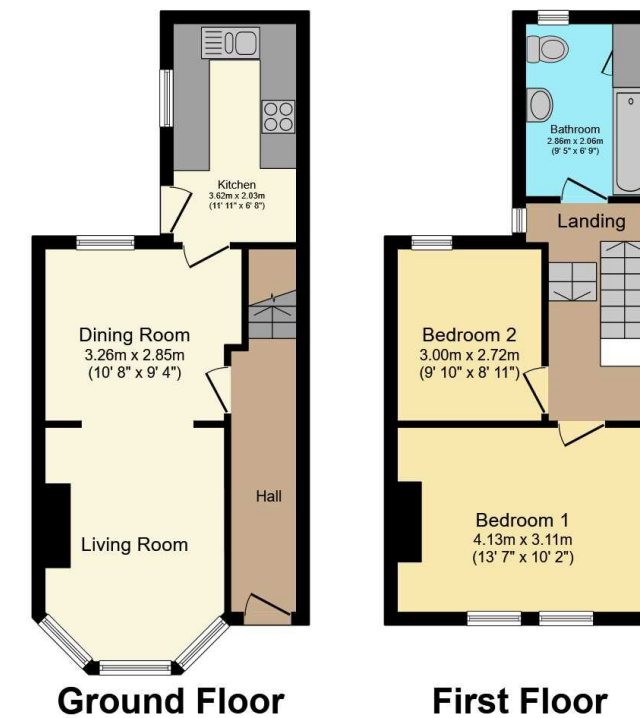
All Measurements
All Measurements are Approximate.

Laser Tape Clause
All measurements have been taken using a laser tape measure and therefore, may be subject to a small margin of error.

Floorplan Clause
Measurements are approximate. Not to Scale. For illustrative purposes only.



For full EPC please contact the branch.



Total floor area 66.9 m² (721 sq.ft.) approx

This floor plan is for illustrative purposes only. It is not drawn to scale. Any measurements, floor areas (including any total floor area), openings and orientation are approximate. No details are guaranteed, they cannot be relied upon for any purpose and they do not form part of any agreement. No liability is taken for any error, omission or misstatement. A party must rely upon its own inspection(s).
Powered by www.focalagent.com