



JOYCE CLARKE
TAKING YOU HOME PROVINCEWIDE



17 Lisnisky Mews, Portadown, BT63 5QY

£925

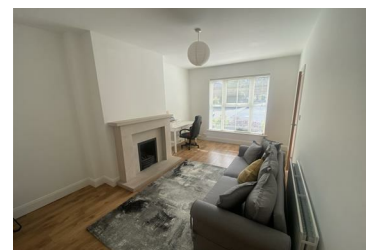


17 Lisnisky Mews is ideally located for those wanting to benefit from an edge of town setting as well as convenience of many local amenities. The property is located within close proximity of Craigavon Hospital, Rushmere and M1. A range of popular primary and secondary schools are all within walking distance.

This partially furnished property is finished to a high standard. Consisting of lounge with feature fireplace, kitchen with integrated electrical appliances, open plan dining and ground floor WC. The first floor comprises of three bedrooms with the master including en suite and a family bathroom. Externally the property boasts a fully enclosed low maintenance rear garden, ideal for family entertaining.

No pets
No smokers

- Partially furnished mid townhouse
- Three bedrooms
- Three bathrooms
- Kitchen with integrated electrical appliances
- Gas heating
- Enclosed low maintenance rear garden
- Walking distance to Craigavon Hospital, schools & amenities



2 West Street, Portadown, Co. Armagh, BT62 3PD

Tel: 02838 331111 Email: lesley@joyceclarke.team <https://www.joyceclarke.team/>