

Rushmore Drive, Lisburn, County Antrim, BT28

Asking Price: £165,000
Leasehold

 **Reeds Rains**

reedsrains.co.uk

Rushmore Drive, Lisburn, County Antrim, BT28

Asking Price: £165,000 Leasehold

Council Tax Band:

EPC Rating: D

A most impressive and highly presented end terraced property with spacious accommodation within, convenient to the Knockmore Road with road access to local shopping centres, shopping and leisure facilities.

Entrance Hall

Laminate flooring

WC

Low level WC, wash hand basin, wall tiling, chrome towel rail.

Living Room

15 x 12'4" (15 x 3.76m)

Feature fireplace with stove inset, wooden flooring, concealed down lighting.

Bedroom 4/ Family Room

9'2" x 7'3" (2.8m x 2.2m)

Laminate flooring

Kitchen/ Dining

19 x 13'7" (19 x 4.14m)

Exceptional range of high and low level units, laminate work tops, ceramic hob and electric oven, sink unit, plumbed for dishwasher/ washing machine, feature island unit, extractor fan, tiled flooring, built-in larder, open to dining area, wooden flooring

Landing

Walk-in robe

Bedroom 1

15'2" x 10'8" (4.62m x 3.25m)

Bedroom 2

12'6" x 9'6" (3.8m x 2.9m)

Bedroom 3

12'10" x 9'7" (3.9m x 2.92m)

Bathroom

White suite comprising panelled bath, floating WC, wash hand basin, wall and floor tiling.

Gardens

Laid in neat lawns.

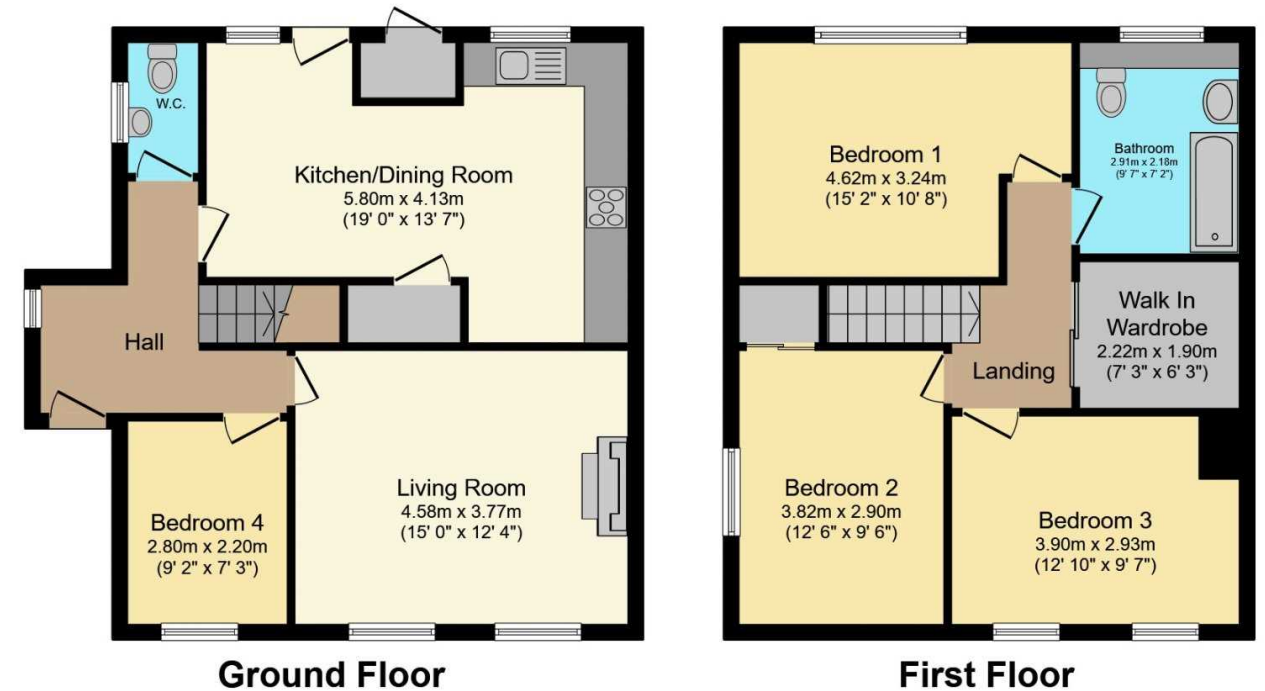
The Reeds Rains branches at 350 Upper Newtownards Road, Ballyhackamore, Belfast, N Ireland BT4 3EX, 18 Main Street, Bangor, Co Down, N Ireland BT20 5AG, Somerset House, 240-242 Ormeau Road, Belfast, Co Antrim, N Ireland BT7 2FZ, 10 High Street, Carrickfergus, Co Antrim, N Ireland BT38 7AF, 8/8A Carnmoney Road, Glengormley, County Antrim, N Ireland BT36 6HN, 14/16 Market Street, Lisburn, County Antrim, N Ireland BT28 1AB and 2 Frances Street, Newtownards, County Down, N Ireland BT23 4JA are operated by Favscos NI Limited which is independently owned and operated under a Licence from Reeds Rains Limited.

All Measurements
All Measurements are Approximate.

Laser Tape Clause
All measurements have been taken using a laser tape measure and therefore, may be subject to a small margin of error.

Floorplan Clause
Measurements are approximate. Not to Scale. For illustrative purposes only.

For full EPC please contact the branch.



Total floor area 112.2 m² (1,208 sq.ft.) approx

This floor plan is for illustrative purposes only. It is not drawn to scale. Any measurements, floor areas (including any total floor area), openings and orientation are approximate. No details are guaranteed, they cannot be relied upon for any purpose and they do not form part of any agreement. No liability is taken for any error, omission or misstatement. A party must rely upon its own inspection(s).
Powered by www.focalagent.com

We may refer you to recommended providers of ancillary services such as Conveyancing, Mortgages, Insurance and Surveying. We may receive a referral fee for recommending their services. You are not under any obligation to use the services of the recommended provider, which may also be an associated company of Reeds Rains.

Other important information which you will need to know about this property can be found at reedsrains.co.uk