

Tim Martin
.co.uk



Lilac Cottage
21 Ballybeen Road
Comber
BT23 5PZ

Offers Around
£625,000

www.timmartin.co.uk
Telephone 028 91 878956

SUMMARY

An exceptional country residence set in its own mature grounds, extending to circa 1½ acres, with quality equestrian facilities including stabling, tack room and floodlit menage.

Internally, the spacious, bright accommodation, is approached from the elegant reception hall with minstrel gallery, and includes living room, lounge and dining room which open through to the garden room, over looking the rear courtyard, and luxury integrated modern kitchen with adjoining larder and laundry room. A guest bedroom and adjacent shower room complete the ground floor.

Three generous bedrooms, two of which have the benefit of a Jack and Jill en suite shower room, and deluxe bathroom complete the first floor. The residence provides spacious, versatile accommodation to suit many families needs.

The generous, mature grounds include a delightful private cobbled courtyard with timber terrace which enjoys a south westerly aspect, making it ideal for spending long summer evenings with family and friends.

To the rear of the property, the facilities are currently ideal for those with equestrian interests, but are equally suitable as office facilities, workshops, conversion to kennels or a private gym, with ample space for parking, if desired (subject to planning approval). A separate paddock is suitable for grazing a horse / pony, pet playground or your own market garden.

This property, is set in the heart of the country between Moneyreagh and Comber, but benefits from being situated a short drive to Belfast City, George Best City Airport, good primary and secondary schools and an abundance of sports and leisure facilities.

FEATURES

- Exceptional Country Residence set on a circa 1½ acres
- Spacious Living Room, Lounge, Garden Room and Dining Room
- Luxury Integrated Kitchen with Adjoining Larder and Laundry Room.
- Ground Floor Bedroom and Shower Room
- Three Spacious First Floor Bedrooms - 2 with Jack and Jill En Suite
- Deluxe Family Bathroom
- Grounds Include Landscaped Garden, Delightful Private Cobbled Courtyard, Terrace and Paddock
- Double Garage
- Stable Blocks and Floodlit Menage - Equally Suitable for Office Facilities, Dog Kennels or Gym
- Short Drive to Belfast City, Easy Access to George Best City Airport and Good Schools

- Reception Hall** **16'7 x 16'2 (5.05m x 4.93m)**
Hardwood parquet floor; corniced ceiling; wall light; telephone connection and broadband point.
- Living Room** **17'8 x 16'10 (5.38m x 5.13m)**
Opus Melody wood burning stove on slate hearth; corniced ceiling and centre ceiling rose; bespoke multimedia unit with fitted cupboards; tv aerial connection point; maple flooring.
- Lounge** **20'9 x 16'11 (6.32m x 5.16m)**
Enclosed cast iron multi fuel stove in hole in the wall fireplace on black marble hearth; white marble chimney piece; maple flooring; corniced ceiling and centre ceiling rose; glazed double doors to:-
- Garden Room** **26'2 x 9'5 (maximum measurements) (7.98m x 2.87m (maximum measurements))**
Marble tiled floor; LED lighting; glazed double doors to terrace; 2 wall uplighters; double doors to dining room.
- Dining Room** **14'10 x 14'8 (4.52m x 4.47m)**
Cast iron arched and embossed fireplace in cast iron surround on black marble hearth; corniced ceiling and centre ceiling rose; telephone connection and tv aerial connection point; maple parquet floor.
- Kitchen** **17'10 x 12'7 (5.44m x 3.84m)**
Excellent range of eye and floor level cupboards and drawers including double Franke Belfast sink with chrome swan neck mixer tap; blue 2 oven oil fired Aga with tiled surround and light over; integrated Siemens dishwasher; Neff double ovens; Siemens 4 ring ceramic hob with extractor fan and light over; integrated Siemens fridge; granite worktops; island unit with cupboards and drawers under and breakfast bar with matching granite worktops; LED lighting; high level tv aerial point; ceramic flagged floor; part tiled walls.
- Walk-in Larder** **8 x 3'2 (2.44m x 0.97m)**
Fully shelved; light and power points.
- Laundry Room** **9'2 x 6'9 (2.79m x 2.06m)**
Range of eye and floor level cupboards including single drainer stainless steel sink unit with swan neck mixer tap; formica worktop; space and plumbing for washing machine; ceramic flagged floor; part tiled walls; ½ door to rear.
- Hallway**
Parquet flooring; corniced ceiling; leading to:-
- Bedroom 1** **14'4 x 11'6 (4.37m x 3.51m)**
Tv aerial and telephone connection point; corniced ceiling.
- Shower Room** **8'4 x 7'5 (2.54m x 2.26m)**
White suite comprising walk-in shower cubicle with thermostatically controlled shower with adjustable and rain head shower heads; floating wash hand basin with mono mixer tap with mirror and light over; close coupled wc; heated chrome towel radiator; ceramic tiled floor and wall.
- Hardwood furnished staircase with decorative turned spindles
- First Floor / Landing**
Hotpress with insulated copper cylinder and Willis type immersion heater; hardwood parquet floor; 2 wall lights.
- Principal Bedroom** **19'7 x 16'11 (5.97m x 5.16m)**
2 double built-in wardrobes; tv aerial and telephone connection point; access to extensive floored eaves storage.
- Bedroom 2** **14'4 x 10'8 (4.37m x 3.25m)**
2 double built-in wardrobes - 1 with sliding doors and cupboards over; built-in window seat with storage; tv aerial connection point.

Jack & Jill En Suite**12'4 x 8'6 (3.76m x 2.59m)**

White suite comprising enclosed shower cubicle with Mira Vado electric shower; pvc panelling and glass shower door; close coupled wc; pedestal wash basin with mono mixer tap; chrome heated towel radiator; extractor fan; Wainscot tongue and groove panelling; vinyl floor; walk-in wardrobe (6'8 x 5'7) with fitted clothes rails and shelves; 12v lighting; extractor fan.

Bedroom 3**13'1" x 11'3" (3.99m x 3.43m)**

(maximum measurements)

Access to Jack & Jill En Suite; built-in window seat with storage under.

Bathroom**12'4" x 12'0" (3.78m x 3.66m)**

(L-shaped maximum measurements)

White suite comprising freestanding oval bath with chrome mono mixer tap and telephone shower attachment; walk-in rectangular shower cubicle with power shower and rain and adjustable shower heads; telephone shower attachment; close coupled wc; floating vanity unit with fitted wash hand basin and mono mixer tap; drawers under; illuminated mirror over; close coupled wc; twin heated towel radiators; porcelain tiled floors and wall; Velux windows; wall mounted bathroom cabinet; LED lighting.

Outside

Feature brick entrance walls with steel railings and matching double electrically operated entrance gates to asphalt driveway and turning circle and to:-

Double Garage**25'6 x 21'2 (7.77m x 6.45m)**

Twin hardwood up and over doors; light and power; Warmflow oil fired boiler; space for tumble dryer.

Garden

Landscaped gardens laid out in lawns and planted with fine selection of shrubs and trees including Rowan, Maple, Flowering Cherry, three Apple Trees and Weeping Willow.

Cobbled Courtyard

Partially enclosed with brick wall with Yorkstone patio; raised illuminated timber terrace; decorative gravelled seating area with two timber pergolas and matching timber dining area.

Stable Block 1

With 5 stables (12'0 x 10'3 average)

Tack Room**11'10 x 8'10 (3.61m x 2.69m)**

With low flush wc and wash hand basin; light and power.

Stable Block 2**Stable****14'7 x 9'9 (4.45m x 2.97m)**

Light.

Stable**14'8 x 12'8 (4.47m x 3.86m)**

Light.

Menage

Foodlit.

Greenhouse**10'0 x 8'0 (3.05m x 2.44m)**

Aluminium and glazed.

Paddock

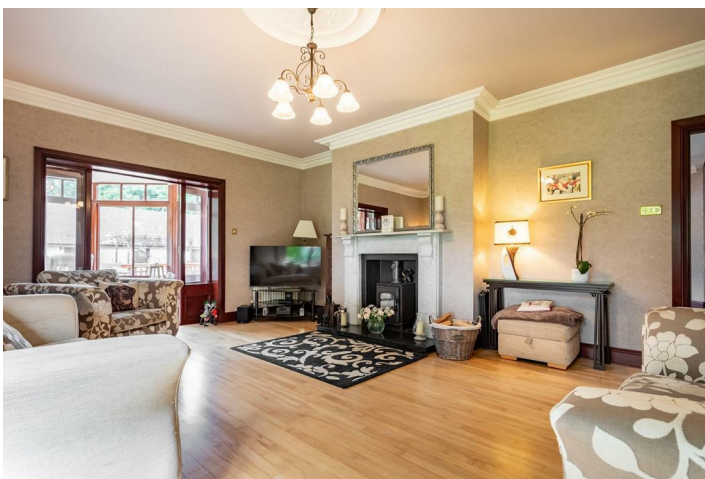
Partially enclosed with ranch fencing and laid down to grass, providing grazing for a horse or pony.

Tenure

Freehold

Capital / Rateable Value

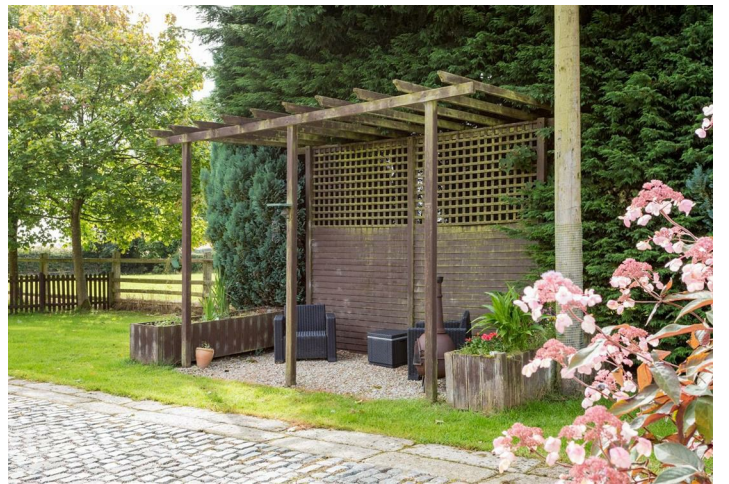
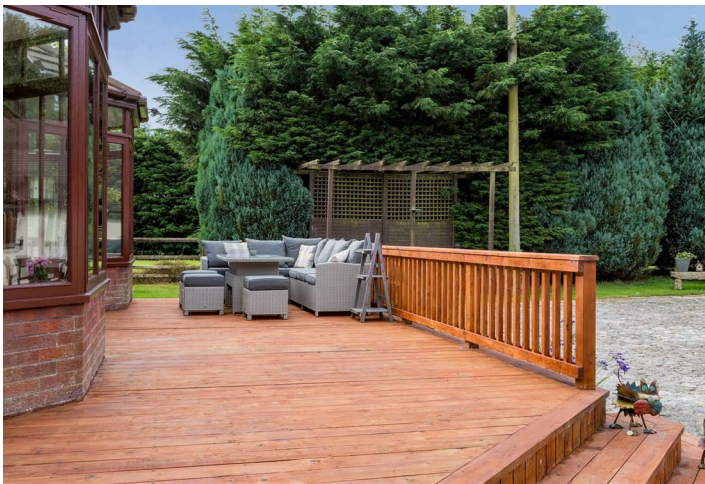
£430,000. Rates Payable = £3654.80 per annum (approx)









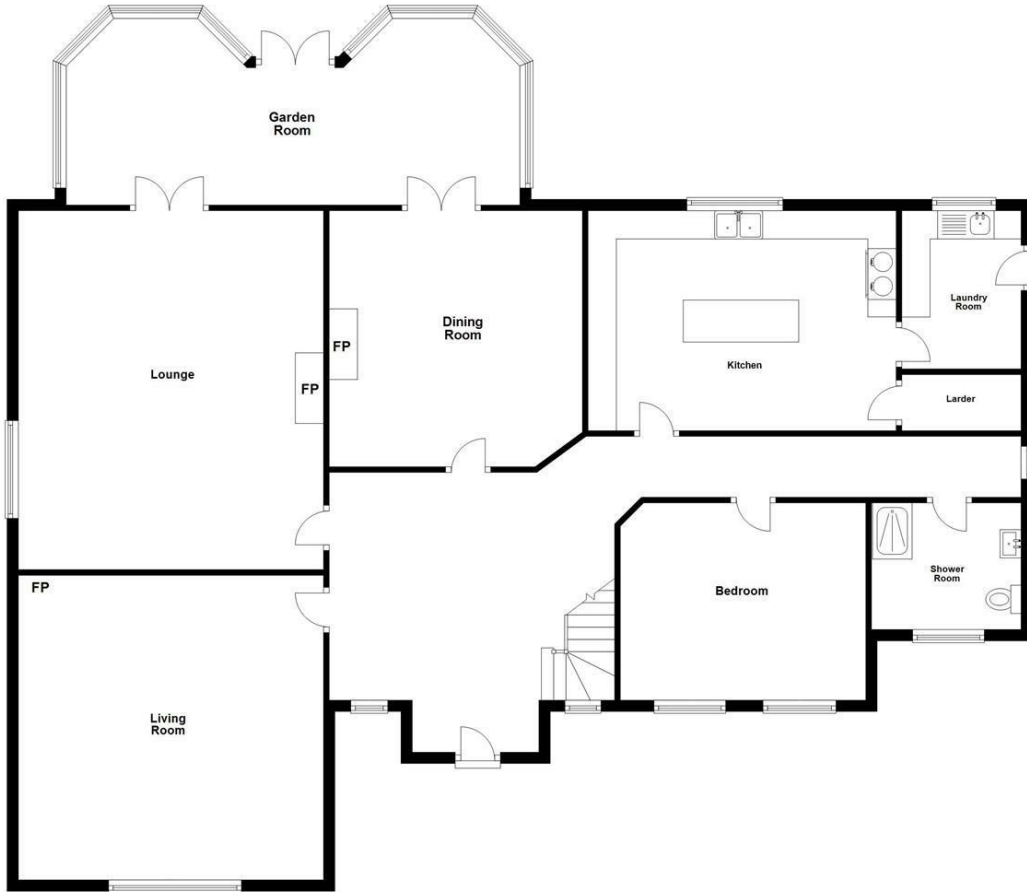






Ground Floor

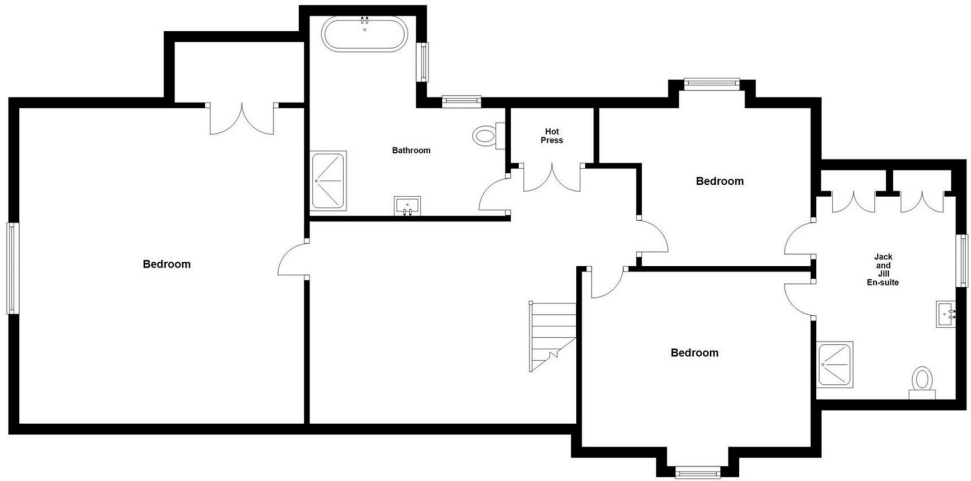
Approx. 193.8 sq. metres (2085.7 sq. feet)



Total area: approx. 304.9 sq. metres (3281.8 sq. feet)

First Floor

Approx. 111.1 sq. metres (1196.2 sq. feet)



Energy Efficiency Rating		Current	Potential
Very energy efficient - lower running costs			
(92 plus)	A		
(81-91)	B		
(69-80)	C		
(55-68)	D		
(39-54)	E		
(21-38)	F		
(1-20)	G		
Not energy efficient - higher running costs			
		63	67

Comber
27 Castle Street, Comber, BT23 5DY
T 028 91 8789596

Saintfield
1B Main Street, Saintfield, BT24 7AA
T 028 97 568300

Tim Martin & Company for themselves and for the vendors of this property have endeavoured to prepare these sales details as accurate and reliable as possible for the guidance of intending purchasers or lessees. These particulars are given for general guidance only and do not constitute any part of an offer or contract. The seller and us as agents, do not make any representation or give any warranty in relation to the property. We would recommend that all information contained in this brochure about the property be verified by yourself or professional advisors. Services, fittings and equipment referred to in the sales details have not been tested (unless otherwise stated) and no warranty will be given as to their condition. All measurements contained within this brochure are approximate. Please contact us prior to viewing the property. If there is any point of particular importance to you we would be pleased to provide additional information or make further enquiries. We will also confirm that the property remains available. This is particularly important if you are contemplating travelling some distance to view the property.