



1 Barban Court

, Dromore, BT25 1QA

£209,950

Welcome to Barban Court in the charming town of Dromore!

Barban Court is situated in a prime spot within this sought after development, within easy reach of Dromore Town Centre and all the schools, shops and amenities that are on your doorstep.

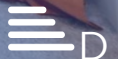
This property has a bright and spacious internal accommodation comprising of a generous living room and a modern open plan kitchen diner, ground floor WC. First floor comprising of three bedrooms with a en suite and family bathroom with separate bath and shower. Furthermore, this property boasts a fully enclosed rear garden to enjoy.

Don't miss the opportunity to make this house your own and create lasting memories in this wonderful property. Contact us today to arrange a viewing and take the first step towards finding your dream home in Dromore

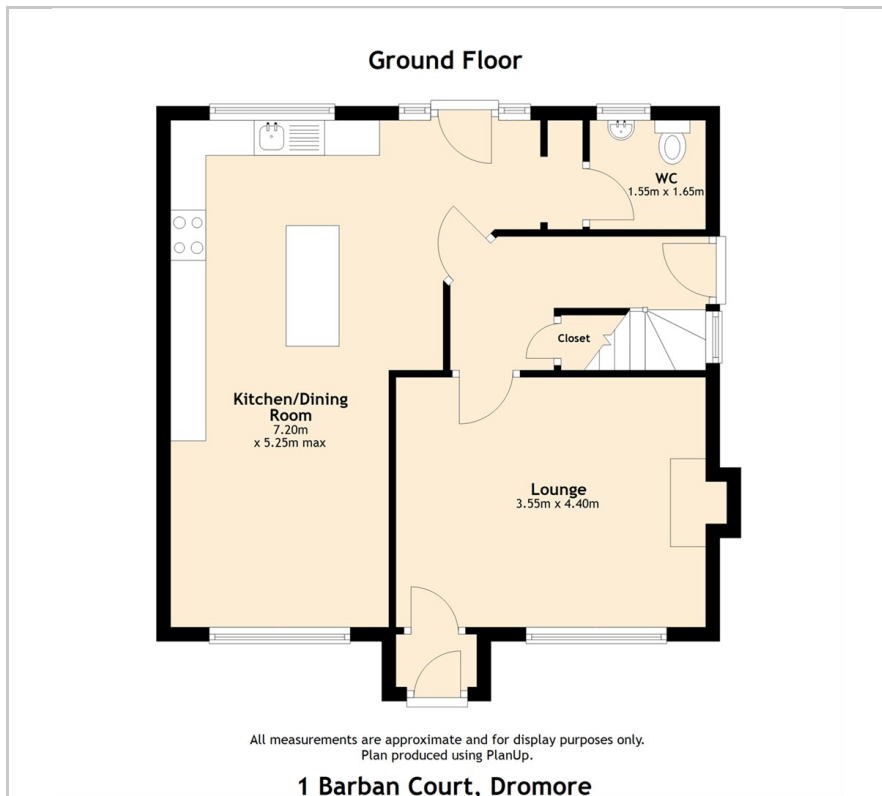
Viewing

Please contact our Cairns and Downing Office on 02896 223 011 if you wish to arrange a viewing appointment for this property or require further information.

- Beautifully Presented Detached Home In A Sought After Location
- Spacious Lounge With Wood Burning Stove
- Luxury Fitted Kitchen And Dining Area With Integrated Appliances
- Cloakroom With Low Flush Suite
- Three Good Sized Bedrooms (Master With En Suite)
- Bathroom With White Suite
- Enclosed Rear Garden Laid In Lawn
- Front Garden With Driveway To Side/Garage With Up Roller Shutter Door
- PVC Double Glazed Windows And Doors
- Oil Fired Central Heating System



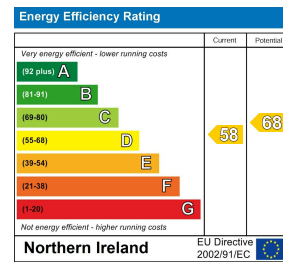
Floor Plan



Area Map



Energy Efficiency Graph



These particulars, whilst believed to be accurate are set out as a general outline only for guidance and do not constitute any part of an offer or contract. Intending purchasers should not rely on them as statements of representation of fact, but must satisfy themselves by inspection or otherwise as to their accuracy. No person in this firm's employment has the authority to make or give any representation or warranty in respect of the property.