



1 Courthall Mews, Newtownabbey, BT36 5GX

£750 Per Month



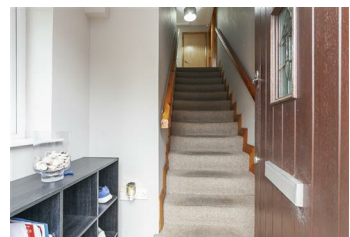
Immaculately presented, own door, first floor apartment, occupying a prime site within the popular Courthall Mews development, situated off Ballyclare Road, Newtownabbey, within walking distance to shops and local amenities of Glengormley village.

The property comprises private entrance hall, stairwell leading to first floor landing, spacious lounge with sliding patio door leading to Juliet style balcony, modern fitted kitchen with informal dining area, two well proportioned bedrooms, to include principal bedroom with en suite shower room, and bathroom with white three piece suite.

Externally the property enjoys communal parking area and communal gardens.

Other attributes include gas fired central heating, PVC double glazing and convenient location.

Early viewing highly recommended to avoid disappointment.



INVESTORS IN PEOPLE
We invest in people Gold

PRS Property Redress Scheme

Proudly sponsoring



WE ARE MACMILLAN
CANCER SUPPORT

Awards

