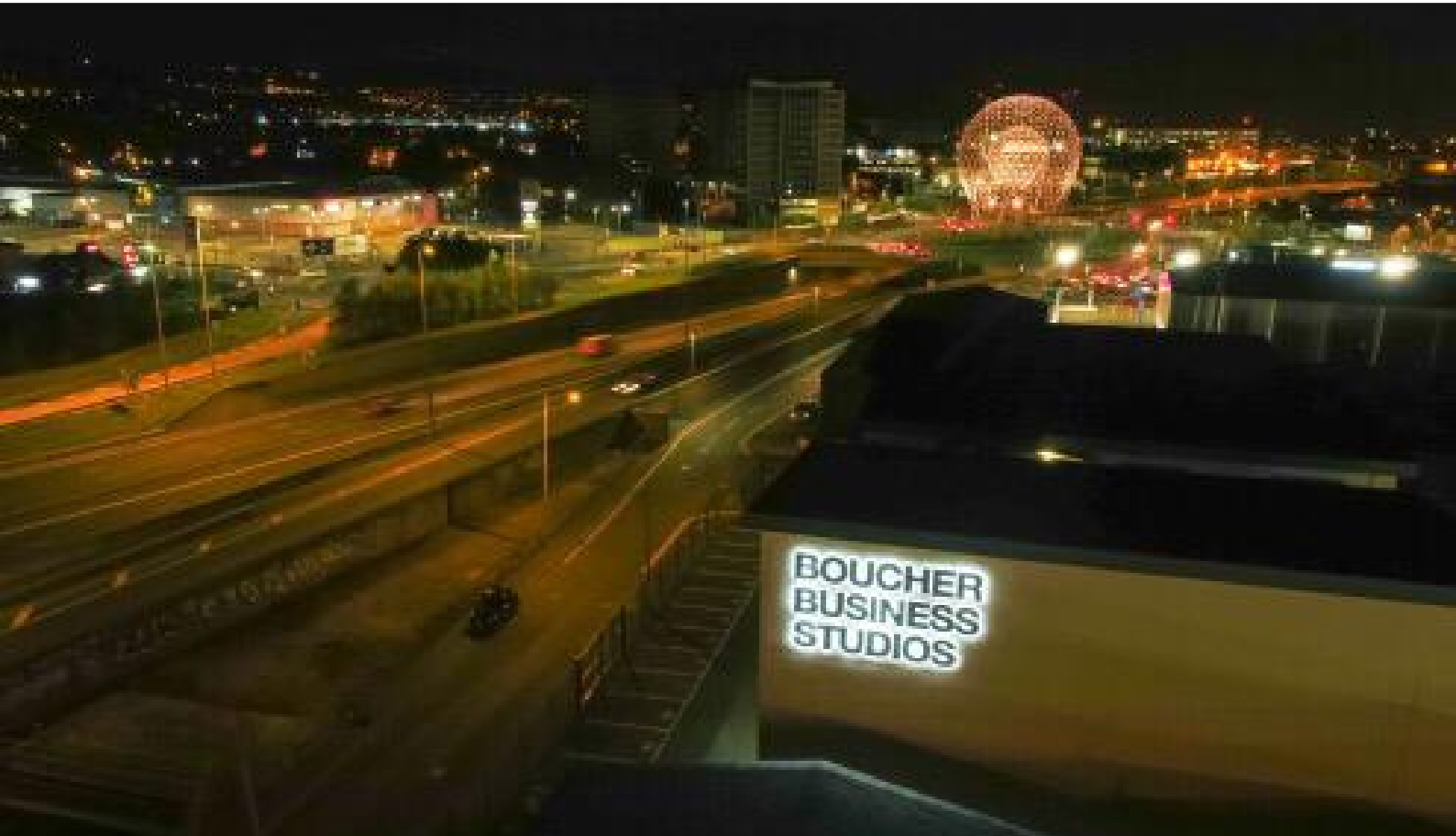


BOUCHER BUSINESS STUDIOS

AI Glenmachan Place | Belfast | BT12 6QH

TO LET

RETAIL/OFFICE UNIT



Boucher Business Studios
- First Floor
AI Office Unit

First Floor Block A
Size – 1876 sq ft

TO LET

**CONTACT
DETAILS**

028 9031 1002
info@ortusproperty.com





Rent 22,500 Per Annum

Rates – Nav £15,000.

**service charge cost of £2.19 psf
under review**

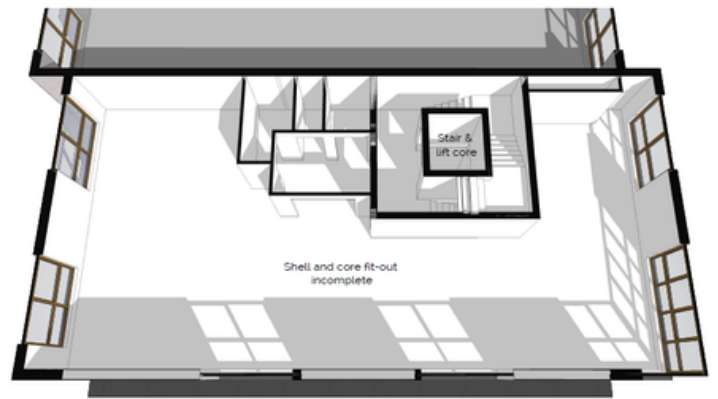
KEY BENEFITS

- **Modern open-plan office**
- **Quick and easy access to M1 Motorway and Belfast City Centre**
- **High specification throughout**
- **Secure allocated parking**
- **Automatic gate opening**
- **High energy efficiency**
- **Lift Access**

LOCATION

Boucher Business Studios is located at Glenmachan Place overlooking Broadway Roundabout. It is just off Boucher Road, Northern Ireland's premier out-of-town retail and business destination.

The property has access to Belfast City Centre and the M1 Motorway within 0.25 miles. It is approximately 5 minutes drive from the M2 Motorway and 10 minutes from Belfast City Airport.



Ortus Property Services

**Filor Building
Twin Spires Complex
155 Northumberland Street
Belfast, BT13 2JF
T: 028 9031 1002
E: info@ortusproperty.com
www.ortusproperty.com**

