



An excellent semi detached family home in a popular location off the Whitewell Road in Newtownabbey with convenient access to the city centre, local schools and shopping complexes.

The bright and tasteful decor will have wide ranging appeal and it is important that prospective purchasers seek an early appointment to view the interior of this fine home.

The accommodation comprises, on the ground floor a spacious main living room, superb modern kitchen and dining area. Upstairs are three well proportioned bedrooms and a deluxe modern bathroom.

In addition the property benefits from uPVC framed double glazed windows, oil fired central heating and an attached garage.

Offers Over  
£189,950

2 Whitewell Mews,  
Newtownabbey,  
BT36 7EG

---

Viewing by  
appointment  
through agent  
028 9066 3030



- Excellent Semi Detached Villa in Popular Residential Location
- Bright & Tastefully Presented Interior will have Wide Ranging Appeal
- Spacious Living Room & Superb Modern Kitchen & Dining Area
- 3 Well Proportioned Bedrooms
- Deluxe Modern Bathroom
- uPVC Framed Double Glazed Windows
- Oil Fired Central Heating
- Attached Garage with Tarmac Driveway to Rear
- Gardens to Front & Rear
- Convenient Access to Local Schools, Shopping Centres & City Centre
- Terrific Views of Cavehill & Belfast Lough

The Property Comprises:

Ground Floor

Glazed uPVC front door and side panel to . . .

ENTRANCE HALL: Tiled floor, understairs storage.



LOUNGE: 15' 0" x 12' 0" (4.57m x 3.66m) Sanded and varnished floor boards, cornice ceiling, feature fireplace with slate hearth.



Telephone 028 9066 3030

[www.templetonrobinson.com](http://www.templetonrobinson.com)

KITCHEN/DINING: 8' 7" x 11' 3" (2.62m x 3.43m) Modern fitted kitchen with range of high and low level units, 1.5 bowl ceramic sink and drainer, plumbed for dishwasher, plumbed for washing machine, alcove for cooker, stainless steel extractor fan, part tiled walls, tiled floor, cornice ceiling, part wood panelled walls, patio doors to rear.



## First Floor

LANDING: Access to roofspace, shelved hotpress with lagged copper cylinder.



BEDROOM (1): 13' 2" x 11' 6" (4.01m x 3.51m) Cornice ceiling.

BEDROOM (2): 13' 4" x 11' 6" (4.06m x 3.51m) Cornice ceiling.

BEDROOM (3): 9' 3" x 7' 11" (2.82m x 2.41m)



BATHROOM: White suite comprising low flush wc, pedestal wash hand basin, panelled bath with overhead electric shower, fully tiled walls, tiled floor.



Outside

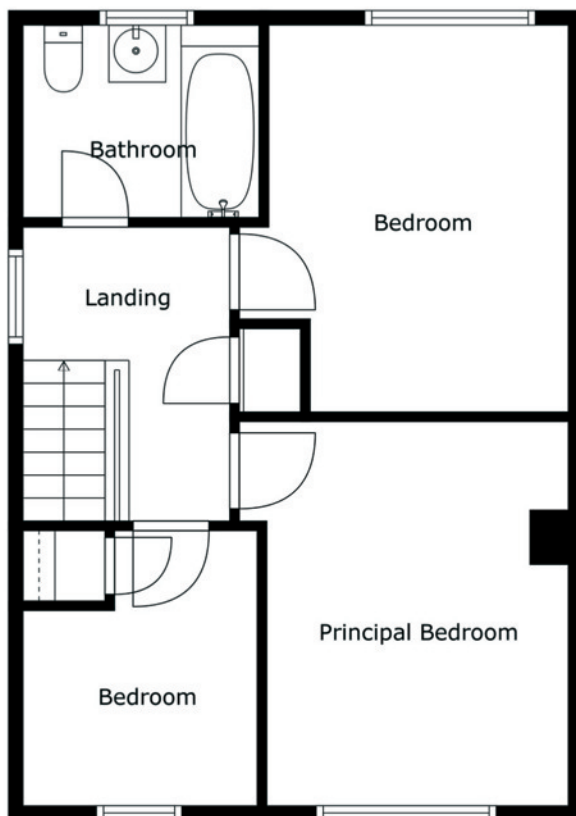
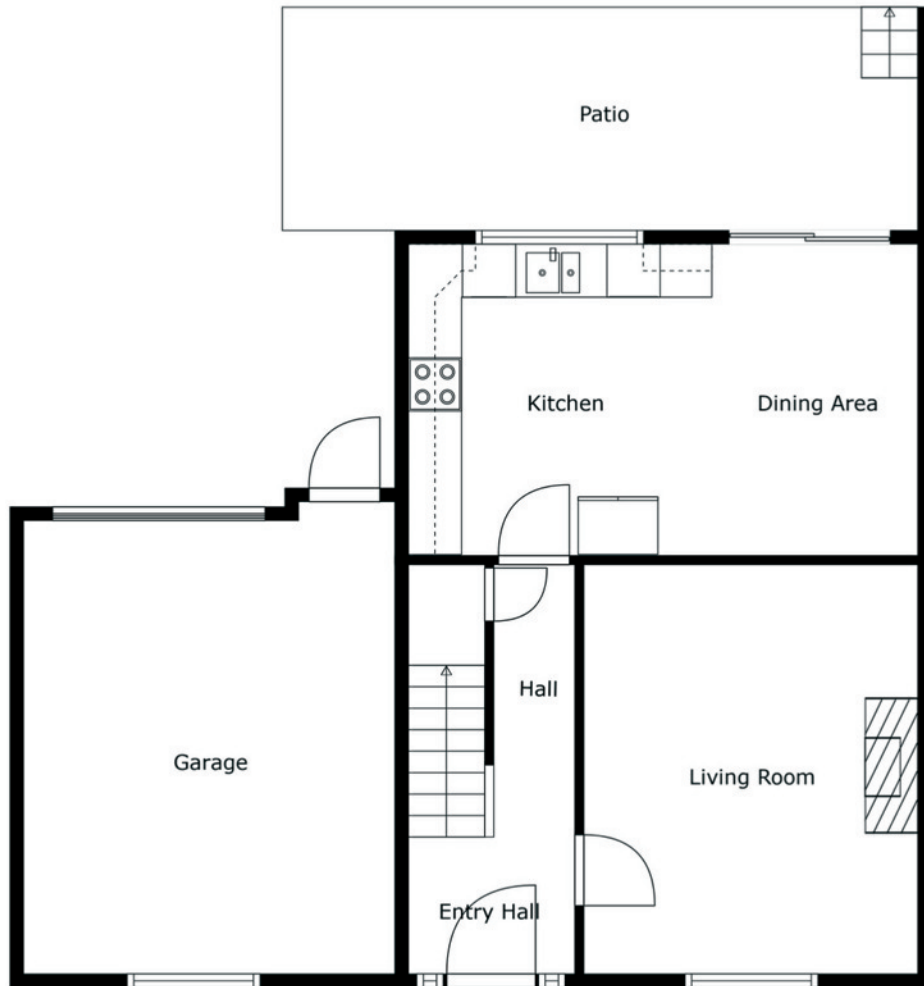
Driveway to front to accommodate several cars, front garden in lawn. Side access to rear driveway leading to raised patio area and . . .

GARAGE: 21' 5" x 13' 3" (6.53m x 4.04m) Roller door, light and power.



Location:

Antrim Road heading out of Belfast towards Glengormley just before motorway bridge turn right onto Floral Road then Whitewell Road is first on the left hand side.



Lisburn Road - 028 90 66 3030  
Ballyhackamore - 028 90 65 0000  
Lisburn - 028 92 66 1700  
North Down - 028 90 42 4747  
[www.templetonrobinson.com](http://www.templetonrobinson.com)



These particulars do not constitute any part of an offer or contract. None of the statements contained in these particulars are to be relied on as statements or representations of fact and intending purchasers must satisfy themselves by inspection or otherwise to the correctness of each of the statements contained in these particulars. The Vendor does not make or give, neither Templeton Robinson, nor any person in its employment has any authority to make or give, any representation or warranty whatever in relation to this property. All dimensions are taken to nearest 3 inches.