



## 20 Roxhill, Antrim, BT41 3ER

£750 Per month



Located on the edge of Randalstown village, in pleasant countryside surroundings, this well presented three bedroom Mid Terrace house is offered for rent. Unfurnished aside from a cooker in the kitchen and benefiting from an excellent standard of finish, this home is likely to see strong interest from the outset.

Pets/Smoking are not permitted at the property. Potential tenants will be asked to complete an application form (for which there is no charge) and a guarantor will be required. The application form can be found here: [harryclarke.co.uk/tenancy-application/](http://harryclarke.co.uk/tenancy-application/).

## Property Features

- Mid Terrace House
- Living Room
- Open plan kitchen/dining room
- Three well proportioned first floor bedrooms
- Bathroom fitted with a bath (shower over), W/C and WHB
- Oil fired heating system
- Hardwood double glazed external windows
- Gardens to the front and rear
- Large storage shed to rear

## Accommodation

(Dimensions and Areas are approximate)

### Ground Floor

#### Entrance Hall

Hardwood front door. Wood effect laminate flooring. Under stairs storage.

#### Living Room 11'5" x 10'7" (max) (3.5 x 3.23 (max))

Wood effect laminate flooring. Tiled fireplace surround with decorative inset.

#### Kitchen/Dining Room 17'3" x 8'6" (5.27 x 2.6)

Fitted with a range of oak eye and low level units, laminate work surfaces with tiled splashback areas over. Cooker with integrated extractor fan over. Under stairs larder cupboard. Hardwood back door. Tiled floor

### First Floor

#### Landing

#### Bedroom 1 7'3" x 8'9" (2.21 x 2.69)

Built in wardrobe. Wood effect laminate flooring.

#### Bedroom 2 11'6" x 9'8" (3.53 x 2.97)

Fitted wardrobe units. Built in wardrobe. Wood effect laminate flooring.

#### Bedroom 3 7'6" x 8'7" (2.3 x 2.64)

Built in airing cupboard. Wood effect laminate flooring.

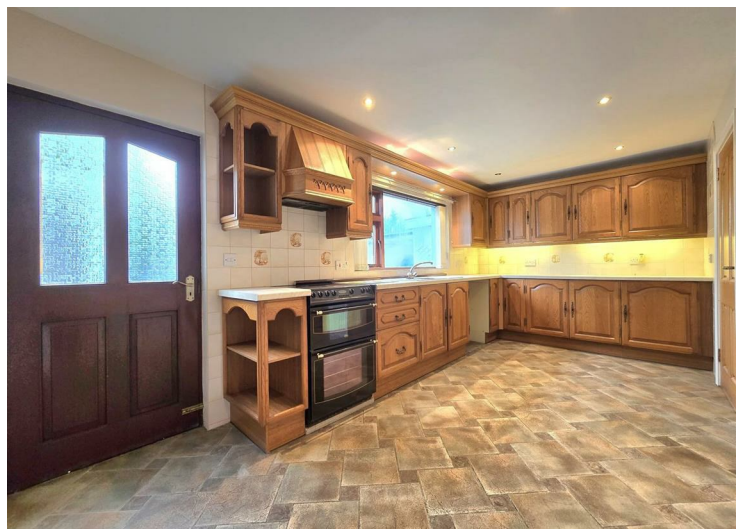
#### Bathroom 6'11" x 5'5" (2.11 x 1.66)

Modern fitted bathroom, including a bath with shower over, W/C and wash hand basin and vanity unit. Tiled splash back areas

### Outside

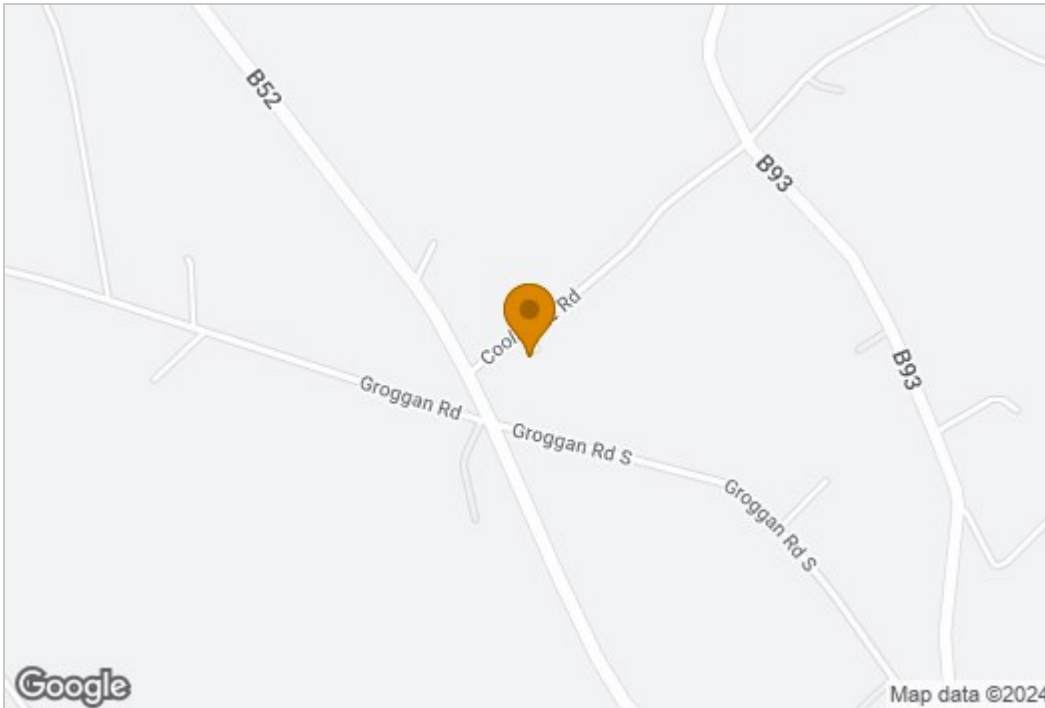
Front garden. Laid in lawn.

Rear garden with a large store and boiler house.

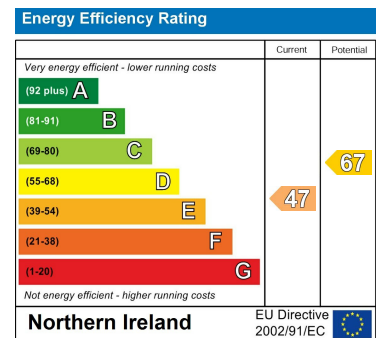




## Area Map



## Energy Efficiency Graph



Harry Clarke & Company is a trading entity of Harry Clarke & Company Limited. Registered in N.I. Company Number NI643802

**Disclaimer-** These particulars do not constitute any part of an offer or contract. None of the statements contained in these particulars are to be relied on as statements or representatives of fact and intending purchasers must satisfy themselves by inspection or otherwise to the correctness of each of the statements contained in these particulars. The vendor does not make or give, neither Harry Clarke & Company, nor any person in it's employment has any authority to make or give any representation or warranty whatever in relation to this property. All dimensions are approximate.

42 Mill Street, Ballymena BT43 5AE || 028 256 48829 || info@harryclarke.co.uk

