



27 Knightsbridge Court, Trim, Co. Meath, C15 F244

€285,000








Raymond Potterton & Co. are delighted to present 27 Knightsbridge Court, a bright and spacious 2 bedroom first floor apartment located in the highly sought after development of Knightsbridge.



# 27 Knightsbridge Court, Trim, Co. Meath, C15 F244

 861.00 sq ft

 2 Bedrooms

 2 Bathrooms

## INTRODUCTION

This secure gated community is offered to those aged fifty-five years or greater, and also to those somewhat younger having additional care needs.

Set in gorgeous landscaped grounds, this apartment offers high quality modern and stylish living accommodation.

There is a chemist, doctors surgery, hairdressers and coffee shop located just outside the main gates at Carechoice. Knightsbridge is excellently located within walking distance of Trim Town Centre.

Accommodation includes Entrance hall, Lounge, Kitchen, 2 Bedrooms (Main Ensuite) and Bathroom.

## FEATURES

- Bright & Spacious First Floor Apartment
- Presented In Excellent Condition
- Secure Gated Retirement Village
- Designated car parking space
- Lift Access
- Within Walking Distance of Trim
- Gas Fired Central Heating
- Only suitable for Over 55's or younger if they have additional needs

## FIXTURES & FITTINGS

All flooring, light fittings, oven, hob, extractor fan, integrated dishwasher and fridge/freezer are included in the sale.

## ACCOMMODATION

### Entrance Hall

17'4" x 4'1"

With carpet and hotpress.

### Lounge

18'4" x 15'6"

With carpet, electric fire with feature fireplace and door to balcony.

### Kitchen

10'1" x 6'11"

With tiled flooring, wall to floor units, oven, hob, extractor fan, integrated dishwasher and fridge/freezer.

### Bedroom 1

13'1" x 11'7"

With carpet and built in wardrobe.

### Ensuite

8'0" x 6'5"

With tiled flooring and walls, shower, w.h.b and w.c.

### Bedroom 2

10'11" x 9'10"

With carpet and built in wardrobe.

### Bathroom

9'10" x 4'9"

With tiled flooring and walls, shower, w.h.b and w.c.

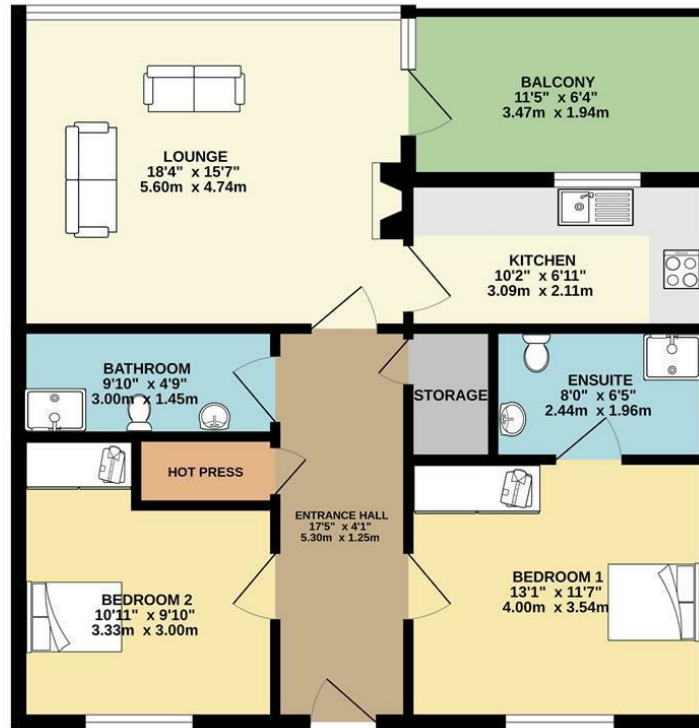
## DIRECTIONS

EIRCODE: C15 F244



# FLOOR PLAN

## GROUND FLOOR



TOTAL FLOOR AREA: 861sq.ft. (80.0 sq.m.) approx.

Whilst every attempt has been made to ensure the accuracy of the floorplan contained here, measurements of doors, windows, rooms and any other items are approximate and no responsibility is taken for any error, omission or mis-statement. This plan is for illustrative purposes only and should be used as such by any prospective purchaser. The services, systems and appliances shown have not been tested and no guarantee as to their operability or efficiency can be given.

Made with Metropix C5024

