




Raymond
Potterton

16 Cois Glaisin Court, Johnstown, Navan, Co. Meath C15 EH4X

€299,000


BER A3





Raymond Potterton & Co proudly presents an exceptional A-rated home. No. 16 Cois Glaisin Court offers an impressively spacious 2-bedroom residence extending to 80 sq. m.



16 Cois Glaisin Court, Johnstown, Navan, Co. Meath C15 EH4X

 861.00 sq ft

 2 Bedrooms

 3 Bathrooms

INTRODUCTION

The property is located within the highly sought-after residential development of Cois Glaisin in Johnstown.

This property was constructed 7 years ago by Glenveagh Homes and meets the highest standards of workmanship featuring high-quality flooring, tiling and a contemporary kitchen

No 16 benefits from two car spaces to the front of the property. The property also features a highly efficient gas heating system and pv panels to contribute to an excellent A rated home

The house boasts a striking full brick facade and is complemented by a cobblelock driveway and enclosed bin storage.

The property is perfectly situated on the Dublin side of Navan Town, this property provides easy access to all the local amenities of Johnstown and Bailis shopping Centre, right at your doorstep. The M3, N3, and N2 are also conveniently accessible.

Accommodation includes Entrance Hall, Lounge, Kitchen / Dining, Guest W.C. and 2 Bedrooms (2 x Ensuite).

FEATURES

- A rated home
- Cobblelock driveway
- Gas heating & PV panels
- Enclosed bin storage
- PVC triple glazed windows
- PVC fascia and soffit
- Stira to attic
- Attic floored





FIXTURES & FITTINGS

All flooring, blinds, curtains, light fittings, oven, hob, extractor fan, integrated dishwasher, washing machine, integrated fridge freezer and garden shed are included in the sale

ACCOMMODATION

Entrance Hall

With composite front door with glass inserts, large glass window panel and wooden flooring.

Lounge

16'5" x 14'11"

With wooden flooring and recessed lights.

Kitchen / Dining

14'2" x 12'5"

With tiled flooring, built in modern wall and floor units with wood effect worktop, splash back tiling, stainless steel sink unit, oven, hob, extractor fan, integrated dishwasher, integrated fridge freezer and patio doors to the garden.

Guest w.c.

4'1" x 6'1"

With tiled floor, w.c. and w.h.b.

Landing

With carpet and hotpress.

Bedroom 1

13'10" x 11'11"

With carpet, built in wardrobes and T.V. points.

Ensuite

4'4" x 8'4"

With tiled flooring, partially tiled walls, w.c., w.h.b., shower and wall mounted mirror.

Bedroom 2

12'7" x 13'9"

With carpet and built in wardrobes.

Ensuite

4'1" x 7'8"

With tiled flooring, partially tiled walls, w.c., w.h.b., shower and wall mounted mirror.

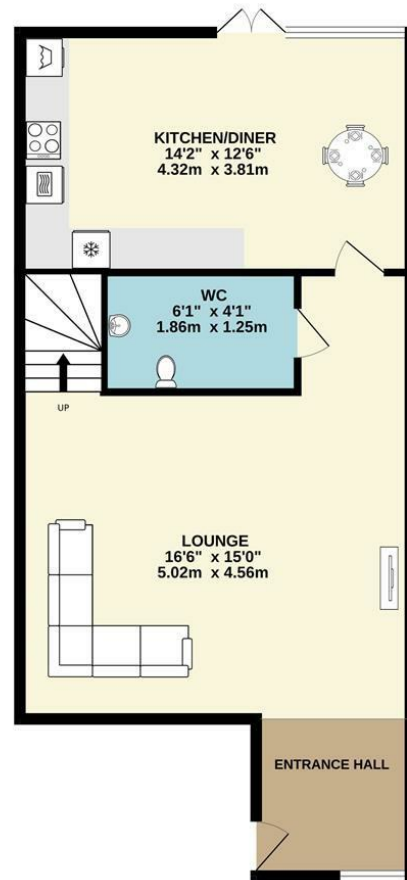
DIRECTIONS

EIRCODE: C15 EH4X

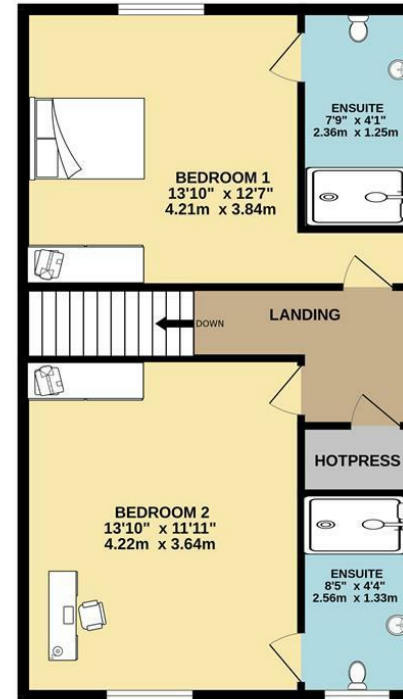


FLOOR PLAN

GROUND FLOOR



1ST FLOOR



TOTAL FLOOR AREA: 861sq.ft. (80.0 sq.m.) approx.

Whilst every attempt has been made to ensure the accuracy of the floorplan contained here, measurements of doors, windows, rooms and any other items are approximate and no responsibility is taken for any error, omission or mis-statement. This plan is for illustrative purposes only and should be used as such by any prospective purchaser. The services, systems and appliances shown have not been tested and no guarantee as to their operability or efficiency can be given.
Made with MetroPix C2024

