

5 Seaholm Parade , Belfast, BT15 3NR

Offers Around £99,950

Well Presented Mid Terrace with Delightful Rear Gardens.

A well presented refurbished mid terrace town house holding an excellent site with delightful gardens and open aspect within this most popular residential location opposite Seaview Primary School and just a short commute to the City Centre. The accommodation comprises 2 double bedrooms, lounge with fireplace, modern fitted kitchen with dining and access to the rear gardens and modern fully tiled white bathroom suite. The dwelling further offers uPvc double glazed windows, doors, fascia & eaves and oil fired central heating. A private rear garden combined with this most popular location to make this an ideal starter home or investment opportunity - Early viewing is highly recommended.

| Energy Efficiency Rating | | Current | Potential |
|---|--|-------------------------|-----------|
| Very energy efficient - lower running costs | | | |
| (92 plus) A | | | |
| (81-91) B | | | |
| (69-80) C | | | |
| (55-68) D | | | |
| (39-54) E | | | |
| (21-38) F | | 32 | 51 |
| (1-20) G | | | |
| Not energy efficient - higher running costs | | | |
| Northern Ireland | | EU Directive 2002/91/EC | |

5 Seaholm Parade

, Belfast, BT15 3NR



- Well Presented Mid Terrace with Delightful Rear Gardens
- Modern Fitted Kitchen With Dining
- Pvc Fascia & Eaves,
- Most Popular Location
- Two Bedrooms
- Fully Tiled Modern Bathroom Suite
- Oil Fired Central Heating
- Lounge With Fireplace
- Upvc Double Glazed Windows & Doors
- Delightful Rear Gardens

Entrance Hall

Upvc double glazed entrance door, ceramic tiled floor double panelled radiator.

Lounge

14'4" x 10'4" (4.38 x 3.17)

Wood laminate floor, attractive fireplace,

Kitchen

13'8" x 7'10" (4.19 x 2.40)

Bowl and a half stainless steel sink unit, extensive range of high and low level units, free standing cooker, integrated extractor, fridge freezer space,

formica worktops, plumbed for washing machine, partly tiled walls, ceramic tiled floor, Upvc double glazed rear door.

First Floor

Landing, panelled radiator.

Bathroom

Fully tiled modern white suite comprising shower cubicle, electric shower unit, vanity unit, low flush wc, pvc panelled walls, ceramic tiled floor, extractor fan, panelled radiator.

Bedroom

10'5" x 8'5" (3.19 x 2.58)

Picture rail, panelled radiator.

Bedroom

13'1" x 9'10" (3.99 x 3.02)

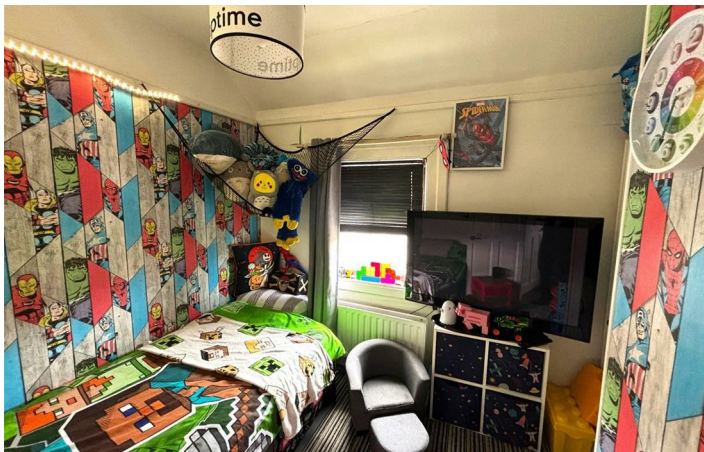
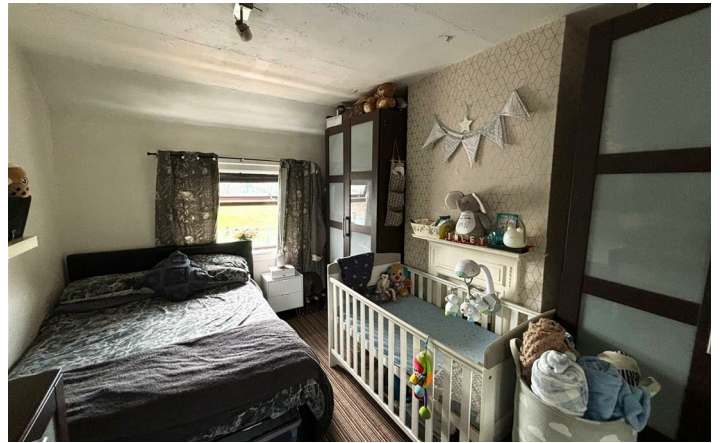
Victorian style fireplace, panelled radiator.

Outside

Hard landscaped gardens to front with brick boundary wall, Hard landscaped rear in patio, timber decking, vertical panel fencing, pvc oil tank, boiler house, outside tap.

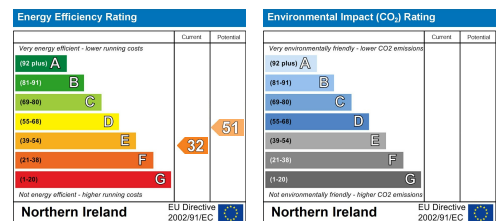


Directions



Floor Plan

These particulars, whilst believed to be accurate are set out as a general outline only for guidance and do not constitute any part of an offer or contract. Intending purchasers should not rely on them as statements of representation of fact, but must satisfy themselves by inspection or otherwise as to their accuracy. No person in this firm's employment has the authority to make or give any representation or warranty in respect of the property.



ULSTERPROPERTYSALES.CO.UK

ANDERSONSTOWN
028 9060 5200

BALLYNAHINCH
028 9756 1155

CAUSEWAY COAST
0800 644 4432

FORESTSIDE
028 9064 1264

NEWTOWNARDS
028 9181 1444

BALLYHACKAMORE
028 9047 1515

BANGOR
028 9127 1185

CAVEHILL
028 9072 9270

GLENGORMLEY
028 9083 3295

RENTAL DIVISION
028 9070 1000

BALLYMENA
028 2565 7700

CARRICKFERGUS
028 9336 5986

DOWNPATRICK
028 4461 4101

MALONE
028 9066 1929



John McLarnon trading under licence as Ulster Property Sales (Cavehill)
©Ulster Property Sales is a Registered Trademark