

# Balloughry Road

Approximate Gross Internal Area  
 Main House = 300.7 sq m / 3237 sq ft (Including Garage)  
 House 2 = 235.3 sq m / 2533 sq ft (Including Garage)  
 Mill - Basement Floor = 506.5 sq m / 5452 sq ft  
 Mill = 1091.5 sq m / 11749 sq ft  
 Outbuildings = 1050.9 sq m / 11312 sq ft  
 Total = 3184.9 sq m / 34283 sq ft

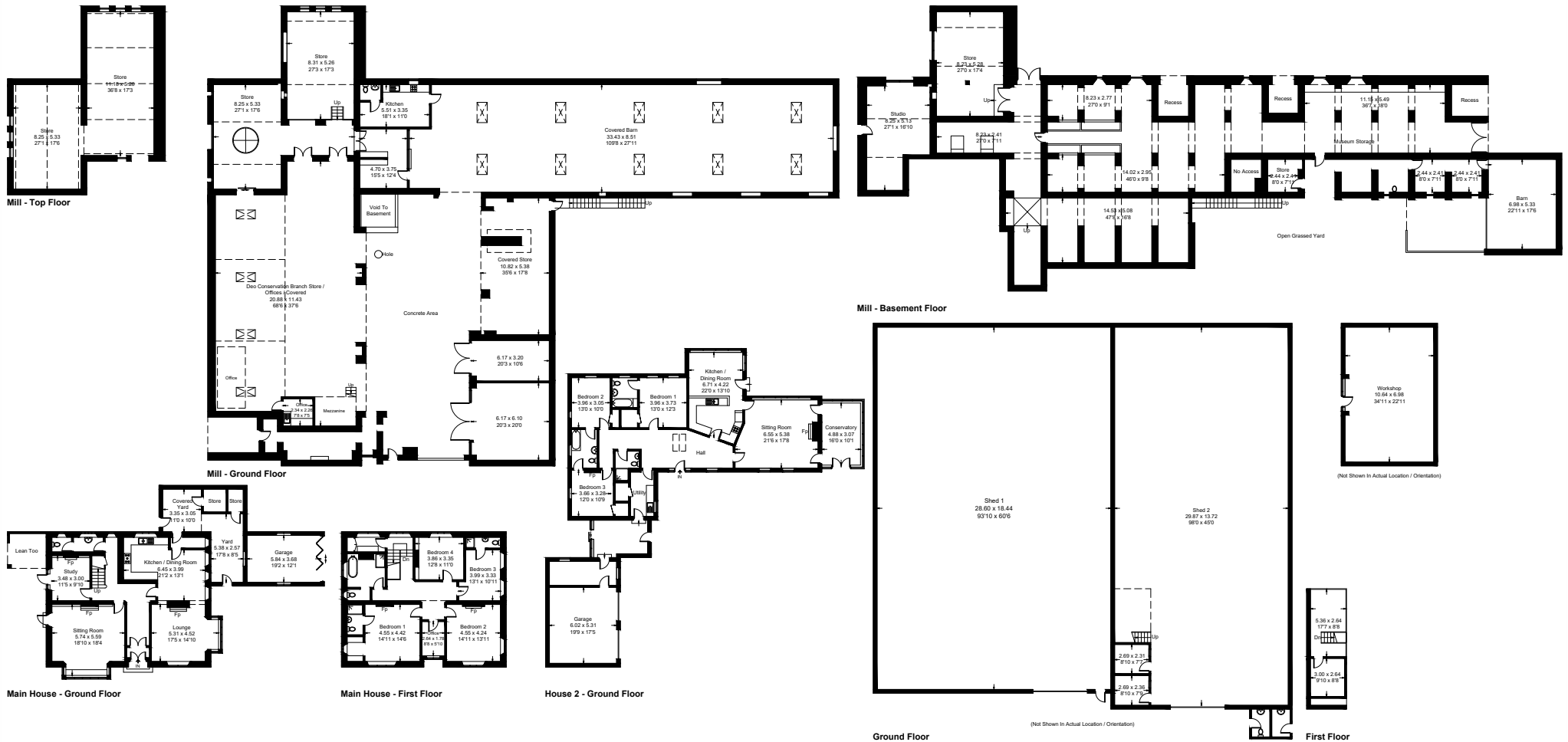


Illustration for identification purposes only, measurements are approximate, not to scale. floorplansUsketch.com © (ID1102022)