

# For Sale

By Public Auction

Guide Price

€P.O.A.

# REA

## JOHN LEE

### TOP CLASS ROADSIDE FARM



REA

JOHN LEE

For Sale by Public Auction on Wed. 18<sup>th</sup> Sept. @ 3pm  
in our offices Main Street, Newport, Co. Tipperary

## OAKHAMPTON

Newport, Co. Tipperary.

Prime Agricultural Holding c. 35 acres with Top  
Class Farm Buildings.

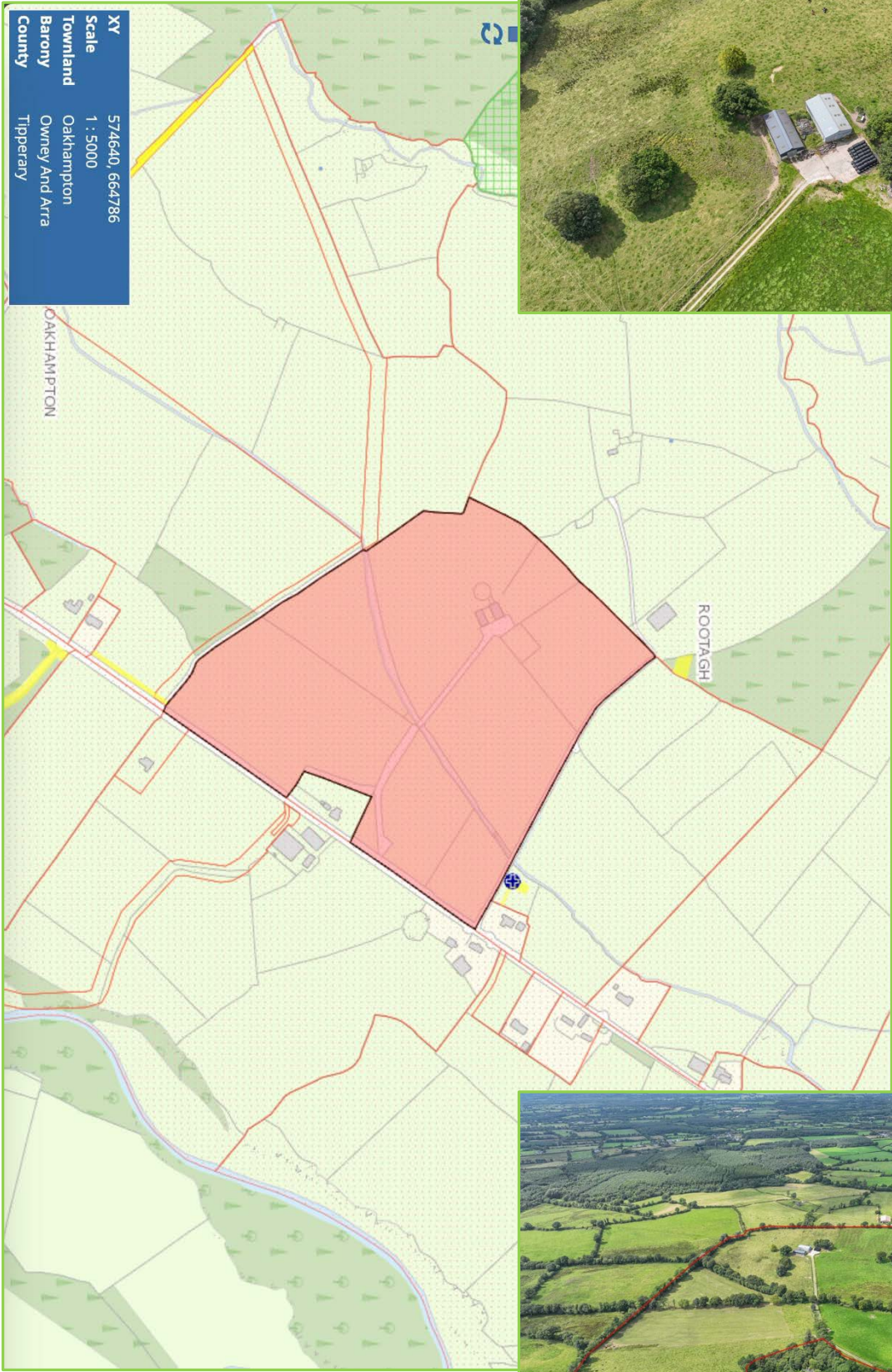


[reajohnlee.ie](http://reajohnlee.ie)

PSRA: 002764



# Map:



Not to Scale. For Identification Purposes Only.

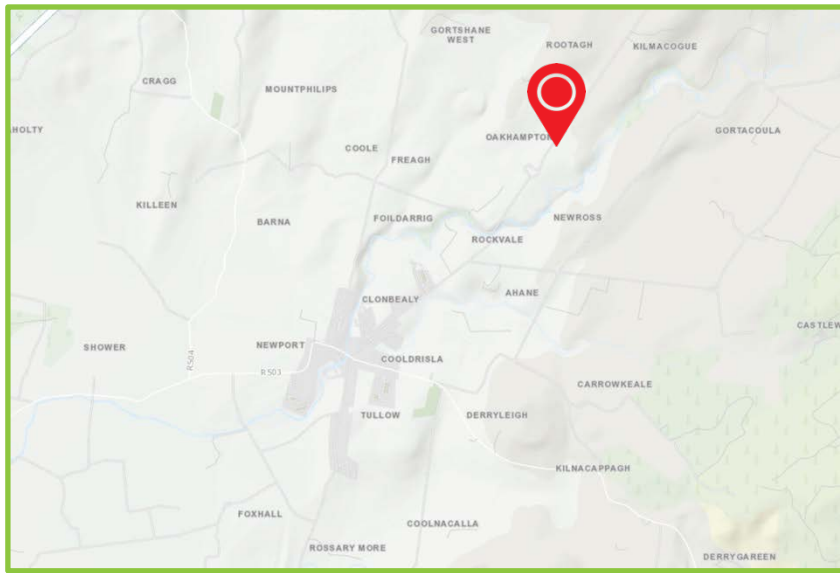
Call 061 378 121



| Aerial Photo:







## | The Lands

REA John Lee bring to the market this Superb c. 35 acre Roadside Farm for Sale by Public Auction on Wed. 18th September at 3pm. The lands are contained in one block, are well fenced with a central roadway and a range of modern farm buildings and cattle handling facilities thereon. They contain some excellent quality productive agricultural lands contained in 7 fields fronting onto the public road with a range of mature trees and hedging. The property has the benefit of mains electricity and a private water supply. This farm would be ideal for someone looking to enlarge their current holding or as a dairy, beef or equine holding. Further details from the agent.

## | LEGAL

Siobhan O'Neill, Connolly O'Neill, Cork Road, Newport, Co. Tipperary. Tel: 061 373 489

## | Viewing

By prior appointment.

## | Directions

From Newport take the L2110 towards Killoscully and Nenagh. The lands are approx. 3km on the left with sign thereon.

## | Price: P.O.A.

Public Auction Wed. 18<sup>th</sup> September,  
@ 3pm in our offices Main Street, Newport.



## | Selling agents

REA John Lee  
Main Street,  
Newport,  
Co. Tipperary.  
V94 FC8Y

T 061 378121  
E [info@reajohnlee.ie](mailto:info@reajohnlee.ie)  
W [www.reajohnlee.ie](http://www.reajohnlee.ie)

## | Sales agent

James Lee  
BSc. Hon's., MRICS MSCSI  
Director

T (086) 235 1221  
E [james@reajohnlee.ie](mailto:james@reajohnlee.ie)

**CONDITIONS TO BE NOTED:** The terms set out herein are by way of partial summary. Intending purchasers should obtain a copy of the Conditions of Sale where the matters are dealt with comprehensively. Particulars and Conditions of sale are available from the Agents and the Solicitors with carriage of sale. REA John Lee for themselves and for the vendors whose agents they are, give notice that: 1) The particulars are set out in this Brochure and Schedule as a general outline for the guidance of intending purchasers and do not constitute part of an offer or contract. 2) All descriptions, dimensions, references to condition and necessary permissions for the use and occupation and other details are given in good faith and are believed to be correct but any intending purchasers should not rely on them as statements or representations of fact but must satisfy themselves by inspection or otherwise as to the correctness of each of them. 3) No person in the employment of REA John Lee has any authority to make representations or warranty whatsoever in relation to this property. All prices quoted are exclusive of VAT

[reajohnlee.ie](http://reajohnlee.ie) PSRA: 002764

