






Michael Chandler

A truly amazing family home with many features and lifestyle opportunities

Very generous and flexible accommodation

- 3 
- 4 
- 3 



Michael
Chandler



Michael
Chandler



Michael Chandler

Panoramic views over local countryside, Dromara Hills and Mourne mountains
 Bespoke hand painted kitchen with a range of integrated appliances and Quartz worktops - open plan to a dining area
 Stunning lounge with a solid wood floor and a multi fuel stove
 Living room with solid wood floor, sandstone fireplace and a feature stained glass window
 Sun room with panoramic views towards the Dromara Hills and Mourne mountains and access to a patio area
 Dining hall with solid wood floor
 Useful utility room off kitchen
 Four double bedrooms, two with modern en-suite shower rooms
 Master bedroom benefits from a walk in wardrobe
 Luxury family bathroom with a white suite and a separate shower cubicle
 Air source central heating and double glazed windows
 Large roof space (partly floored) with excellent storage
 Detached double garage with potential to convert into further accommodation (Subject to approvals)
 Intruder alarm and CCTV installed
 Expansive driveway with excellent parking facilities
 Beautifully landscaped gardens
 Totally private and tranquil patio that is ideal for barbeques and relaxing
 Convenient location close to Belfast, Lisburn and Carryduff



Michael Chandler



Michael Chandler

Tranquil Experience!

Tranquil, picturesque and peaceful are three words that spring to mind when describing this wonderful detached bungalow. Set at the top of a private laneway, this stunning home has to be experienced to be believed . . . an immaculate and stylish interior and a convenient location that is within twenty minutes of Belfast and ten minutes of Lisburn. . . what is not to love! From the moment you turn into the driveway you will notice the charm and character and will be blown away by the gardens and feel like you have arrived somewhere very special.

The generous accommodation of this home comprises a stunning dining hall that offers a beautiful oak hardwood floor, a spacious living room with a matching hardwood floor, a feature Sandstone fireplace and an open fire that flows into a bright sun room with feature slate flooring that offers amazing views towards the Mourne Mountains and surrounding countryside. The living accommodation is completed with a large living room again with solid wood flooring, a multi fuel stove and views over surrounding gardens and countryside. The real hub of the home is the modern hand painted kitchen with Quartz work surfaces, superb range of units, built in appliances and a centre island with a casual dining area - perfect for entertaining family or friends. To the left hand side of the property is a large master suite with walk in wardrobe and an en suite shower room, a further three spacious double bedrooms - one with a modern en suite shower room and a family bathroom with a white three piece suite and a separate shower.

The property itself sits on approximately 0.60 of an acre which is laid out in well maintained lawns, paved patio areas and a large tarmac driveway with ample parking for numerous cars. To the side, there are two large double garages, two large store rooms and WC that could be easily converted into additional living space for a teenager or elderly relative (Subject to the usual approvals).



Asking Price £525,000





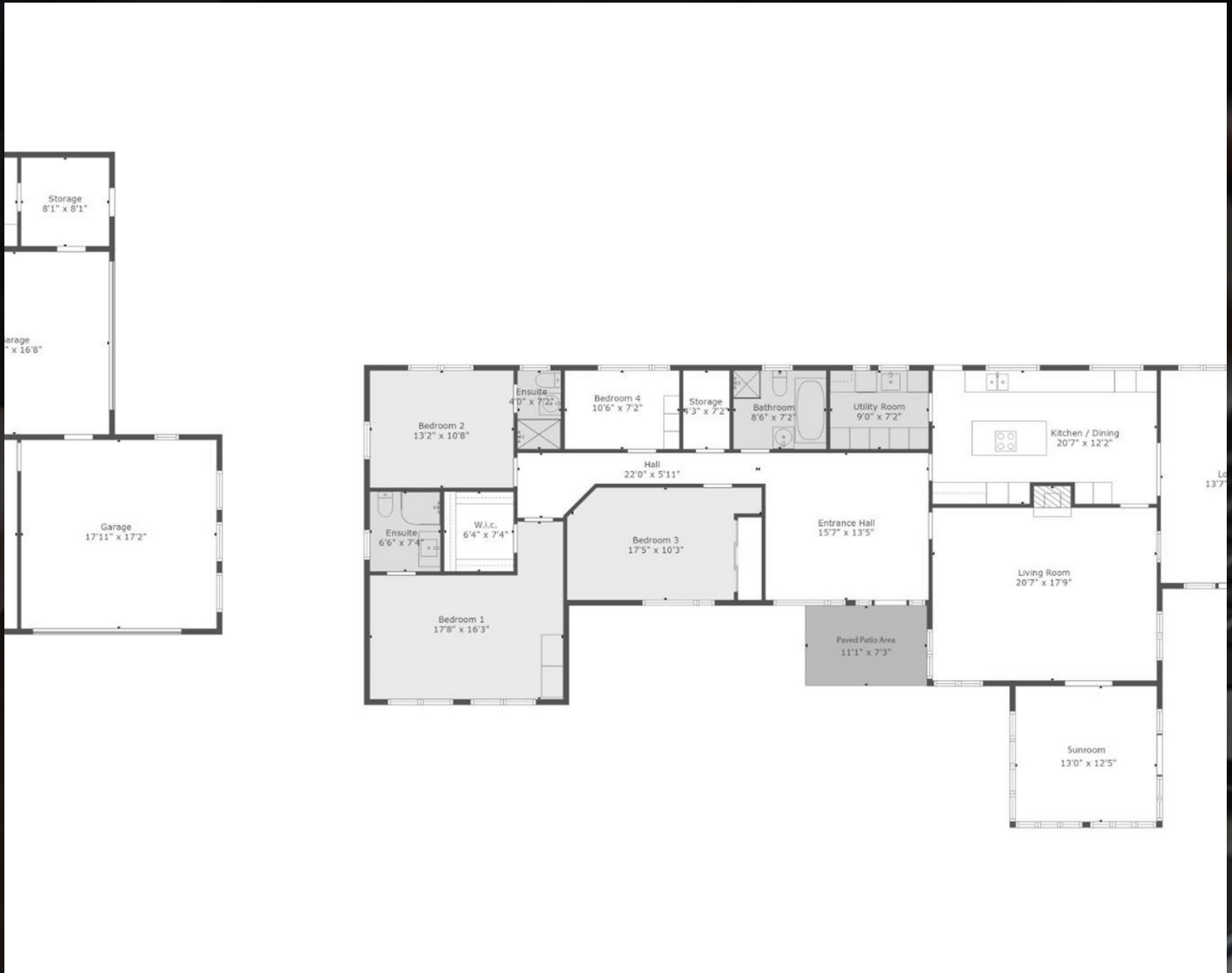




Michael
Chandler



Michael
Chandler



Mortgage advice is available from our in-house Mortgage Advisor, you can find out how much you can borrow within minutes!

REQUEST VALUATION

We would be delighted to visit your property and give you a Free Valuation and some helpful advice regarding the sale or rental of your property to you!

513 Ormeau Road, Belfast, BT7 3GU

02890 450 550

property@michael-chandler.co.uk

michael-chandler.co.uk

Michael
Chandler
ESTATE AGENTS