



FREE INDEPENDENT FINANCIAL ADVICE

Mortgage Services:

- First Time Buys
- Home Movers
- Remortgaging
- Holiday/ Second Homes
- Holiday Lets
- Buy To Let
- Co-Ownership

Other Financial Services:

- Mortgage Protection
- Life Insurance
- Critical Illness Cover
- Income Protection
- Buildings & Content Insurance
- Landlord Insurance

To arrange a private consultation appointment,
please contact Armstrong Gordon on
028 7083 2000

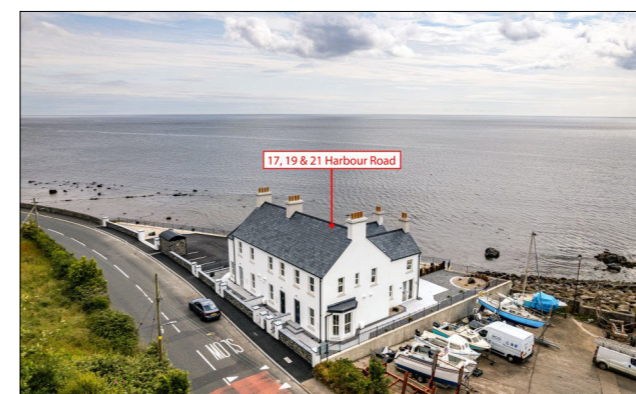


ARMSTRONG GORDON



64 The Promenade Portstewart BT55 7AF
T. 028 7083 2000

F. 028 7083 2950 E. info@armstronggordon.com W. www.armstronggordon.com



CARNLOUGH

21 Harbour Road

BT44 0EU

Offers Over £525,000

Armstrong Gordon & Co. Ltd Estate Agents for themselves and for the vendors and for the lessors of this property whose agents they are given notice that: (1) the particulars are set out as a general outline only for the guidance of intending purchasers or lessees, and do not constitute, nor constitute part of an offer or contract; (2) all descriptions, dimensions, references to condition and necessary permissions for use and occupation and other details are given without responsibility and any intending purchaser or tenants should not rely on them as statements or representations of fact but must satisfy themselves by inspection or otherwise as to the correctness of each of them; (3) no person in the employment of Armstrong Gordon has any authority to give any representation or warranty whatever in relation to this property

028 7083 2000
www.armstronggordon.com

Armstrong Gordon are delighted to offer for sale this outstanding sea and harbour fronted new build town house finished to the highest of standards and workmanship throughout. Each property will come with a 10 year guarantee and has its own fully paved garden area right down to the tranquil seafront. There is a private car park for the development and each property has its own out side storage unit. The property is now available for viewing by appointment.

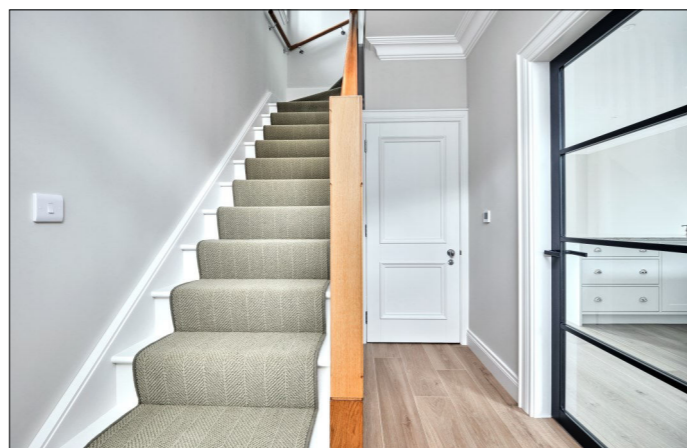
Travelling along the coast road from Glenariffe as you enter Carnlough these properties are the only ones on the seaward side just before the harbour entrance.

ACCOMMODATION COMPRISES:

GROUND FLOOR:

Hallway:

6'3 wide with thermostat controls, deep moulded skirtings, architraves and cornicing, recessed lighting and porcelain tiled floor (David Scott tiles), Stitched herringbone weave carpet on stairs.



Separate W.C.:

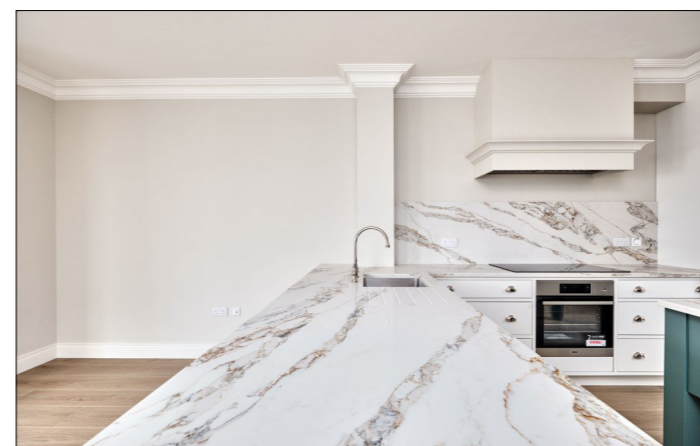
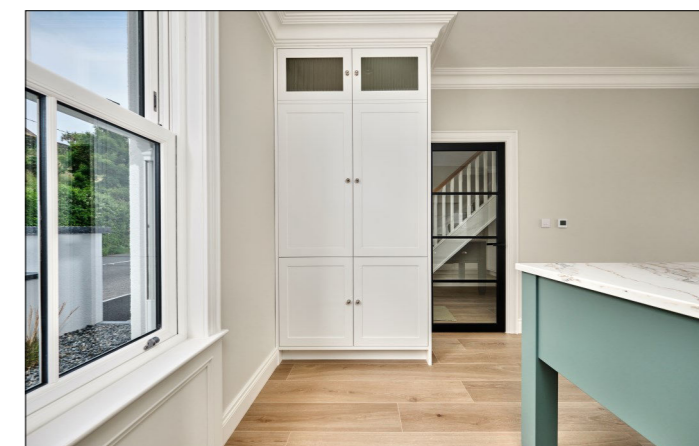
With w.c., wash hand basin, full wall fitted mirror, half wood panels and porcelain tiled floor (David Scott tiles).

Open Plan Kitchen / Lounge / Dining:

With porcelain tiled floor (David Scott tiles) and under floor heating. 26'0 x 18'9

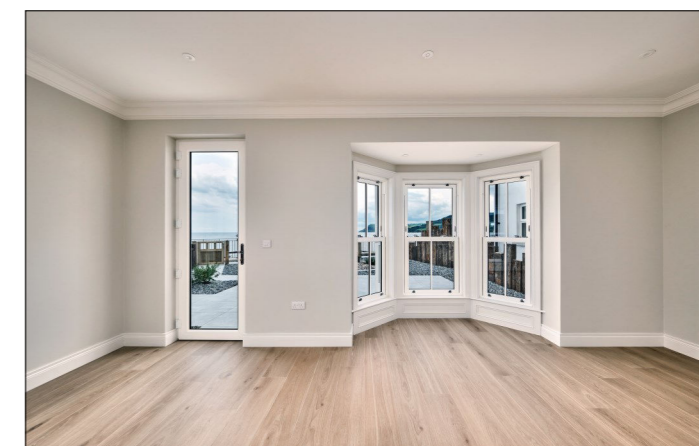
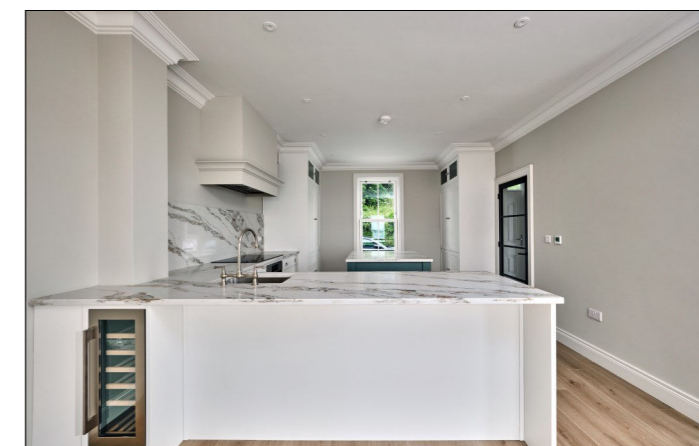
Kitchen / Dining Area:

Bespoke handcrafted in-frame kitchen cabinetry finished in Little Greene paint with polished chrome hardware, Lamont Siquastone worktops and upstands, heritage polished nickel tap with undermount 'Abode' stainless steel sink unit, bespoke Plain English style island with breakfast bar seating, cabinetry including a pantry with Oak interior finishes, integrated Caple wine cooler, eye level AEG oven, integrated induction 5 ring hob with wood cooker hood canopy extractor fan, integrated washer and dryer, integrated fridge freezer and dishwasher, saucepan drawers, drawer banks, deep moulded skirting, architraves and cornicing, thermostat controls, feature Crittall style glazed door and PVC sliding doors leading to rear patio area with views across Carnlough Harbour, Antrim Coastline and Atlantic Ocean. 12'8 x 12'11



Living Area:

With bay window and pedestrian access to outside patio area both having stunning views of Carnlough harbour extending across the Irish sea towards Scotland. 19'7 x 11'3 (into bay)



Study:

Luxury porcelain David Scott Tiles with underfloor heating . 11'6 x 8'2

FIRST FLOOR:

Landing:

With access to roof space and Stitched herringbone weave carpet.



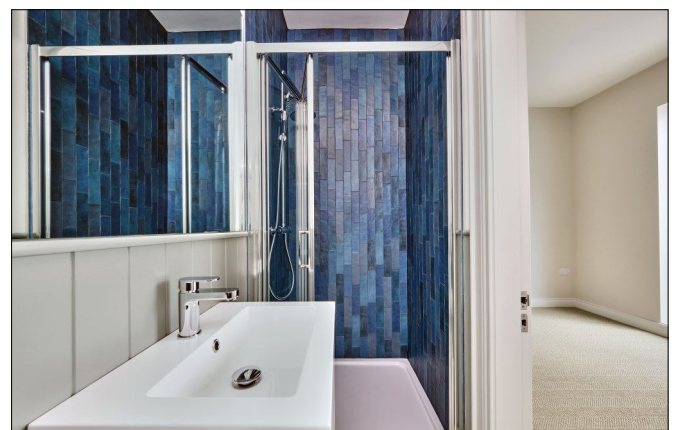
Master Bedroom:

With Stitched herringbone weave carpet. 13'0 x 8'8(into bay)



Ensuite Shower Room:

With w.c., wash hand basin with mixer tap, fully tiled walk in shower cubicle with rainfall shower, additional hand shower, part wood panelled walls, David Scott tiled throughout. 8'7 x 3'2



Bedroom 2:

With Stitched Herringbone weave carpet. 11'3 x 10'4 (max)



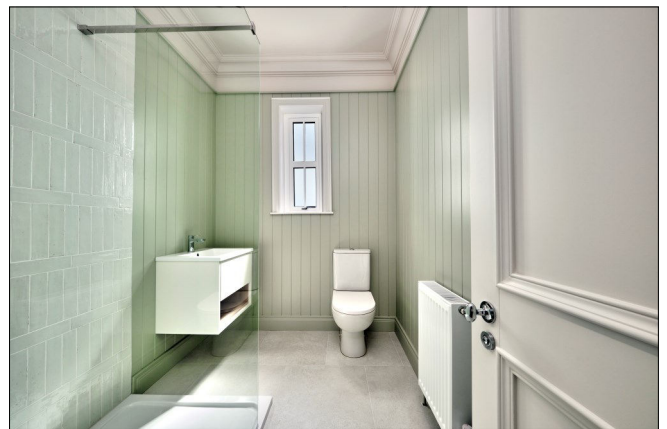
Bedroom 3:

With Stitched herringbone weave carpet. 15'9 x 10'9 (max)



Shower Room:

With w.c., wash hand basin set in floating vanity unit with mixer tap and storage below, fully tiled walk in shower cubicle with low profile shower tray, Rainfall shower fitting with additional hand held shower, deep moulded cornicing, wood panelled walls, and porcelain tiled floor (David Scott tiles). 7'6 x 6'1



EXTERIOR FEATURES:

Outside to rear there is a paved and landscaped terrace area to sea and beach edge. Secure car parking area and external store.





SPECIAL FEATURES:

- ** Gas Fired Central Heating , Under Floor At Ground Level
- ** PVC Double Glazed Windows With A Traditional Sliding Sash Finish Internally
- ** Finished To A Luxurious Standard Throughout
- ** Stunning Sea & Harbour Front Location Offering Views Towards Sea & Scotland
- ** Private Car Park
- ** Large Terrace/Garden Areas To Seaward Side Onto Beach / Sea
- ** External Storage Unit
- ** 10 Year Build Warranty (Architects Certificate)

TENURE:

Freehold

CAPITAL VALUE:

Not Assessed

