

4 Lisnabreen Terrace, Bangor,  
County Down, BT20 4XH

**Asking Price: £109,950**

 **Reeds Rains**

reedsrains.co.uk



## 4 Lisnabreen Terrace, Bangor, County Down, BT20 4XH

Asking Price: £109,950

EPC Rating: TBC

### Description

This spacious and well-presented three-bedroom terrace property is set in a popular residential area close to many local amenities, schools, as well as a short walk from Bloomfield Retail Park, transport links, and has the added bonus of a bus stop just a minute's walk away.

The accommodation comprises of a spacious lounge and fitted kitchen open plan to casual dining area on the ground floor, with 3 first floor bedrooms and a shower room with white suite. Externally there are gardens to both the front and rear.

Offered to the market chain free, this property will be ideal for either the first time buyer or investor alike.

### Entrance Hall

uPVC double glazed front door, ceramic tiled floor.

### Lounge

15'1" x 13 (4.6m x 13)  
Laminate wooden floor.

### Kitchen / Dining

15'11" x 8'4" (4.85m x 2.54m)  
Single drainer 1.5 stainless steel sink unit with mixer taps, excellent range of high and low level units with laminated work surfaces, built in oven and 4 ring ceramic hob, stainless steel chimney extractor fan, plumbed for dishwasher, part tiled walls, ceramic tiled floor, under stairs storage, recessed spotlights, casual dining area, uPVC double glazed door to lean to.

### Lean to

15'11" x 8'6" (4.85m x 2.6m)  
Plumbed for washing machine.

### First Floor Landing

#### Shower Room

White suite comprising: Walk in shower cubicle with Mira shower unit, vanity unit with mixer taps, dual flush WC, ceramic tiled floor, fully tiled walls, recessed spotlights, heated towel rail.

#### Bedroom 1

14'4" x 8'10" (4.37m x 2.7m)  
Laminate wooden floor.

#### Bedroom 2

9'3" x 8'10" (2.82m x 2.7m)  
Laminate wooden floor, recessed spotlights.

#### Bedroom 3

11'1" x 6'9" (3.38m x 2.06m)  
Laminate wooden floor, built in cupboard, hot press.

### Gardens

Front garden in lawns.  
Enclosed rear garden in paved patio. PVC Oil tank.

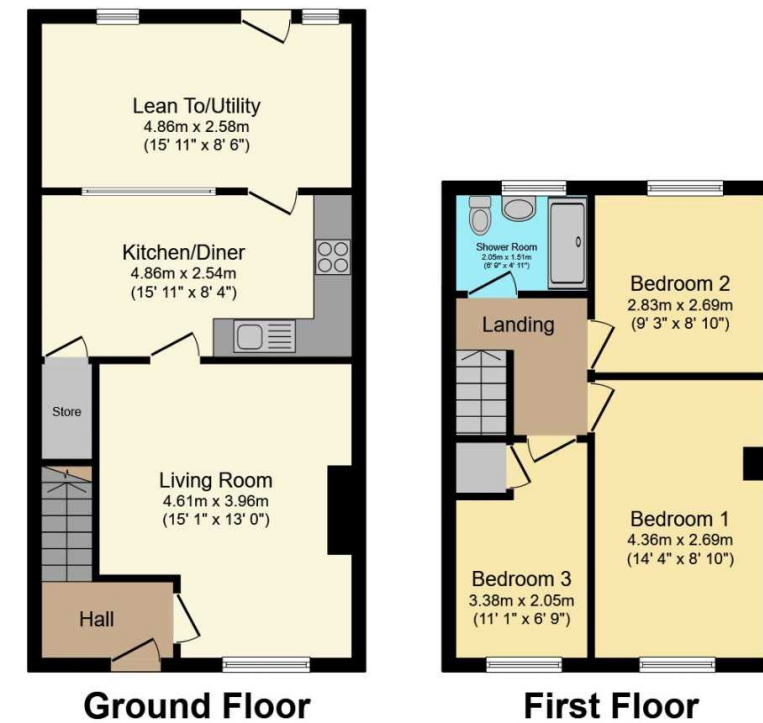
The Reeds Rains branches at 350 Upper Newtownards Road, Ballyhackamore, Belfast, N Ireland BT4 3EX, 18 Main Street, Bangor, Co Down, N Ireland BT20 5AG, Somerset House, 240-242 Ormeau Road, Belfast, Co Antrim, N Ireland BT7 2FZ, 10 High Street, Carrickfergus, Co Antrim, N Ireland BT38 7AF, 8/8A Carnmoney Road, Glengormley, County Antrim, N Ireland BT36 6HN, 14/16 Market Street, Lisburn, County Antrim, N Ireland BT28 1AB and 2 Frances Street, Newtownards, County Down, N Ireland BT23 4JA are operated by Favscos NI Limited which is independently owned and operated under a Licence from Reeds Rains Limited.

All Measurements  
All Measurements are Approximate.

Laser Tape Clause  
All measurements have been taken using a laser tape measure and therefore, may be subject to a small margin of error.

Floorplan Clause  
Measurements are approximate. Not to Scale. For illustrative purposes only.

For full EPC please contact the branch.



Total floor area 83.5 m<sup>2</sup> (899 sq.ft.) approx

This floor plan is for illustrative purposes only. It is not drawn to scale. Any measurements, floor areas (including any total floor area), openings and orientation are approximate. No details are guaranteed, they cannot be relied upon for any purpose and they do not form part of any agreement. No liability is taken for any error, omission or misstatement. A party must rely upon its own inspection(s).  
Powered by [www.focalagent.com](http://www.focalagent.com)