


Apartment 6, Deramore Mews,
Ormeau, Belfast, BT7

Offers over £124,950

 **Reeds Rains**

reedsrains.co.uk

Apartment 6, Deramore Mews, Deramore Street, Belfast, BT7
Offers over £124,950

Located within a short stroll from the hustle and bustle of the Ormeau Road, this ground floor apartment is an ideal first time buy or investment.

Internally the apartment consists of an entrance hall accessed via it's own front door, living room open plan to kitchen, one bedroom and bathroom with white suite.

Externally there is communal parking space for the apartment.

Viewing is highly recommended, please contact our sales team on (028) 9068 0420 to arrange a visits.

NEED A MORTGAGE ?

We can help you with this, ask in branch for details

GROUND FLOOR

Own Front Door

Reception Hall

Wooden floor. Two storage cupboards.

Living Room Open Plan To Luxury Kitchen 18'9 * 15'9 (at widest)

Range of high and low level units with laminated work surfaces. Single drainer stainless steel sink unit with mixer taps. Plumbed for washing machine. Ceramic tiled floor to kitchen. Gas fired boiler. Wooden floor to living area.

Bedroom 12'5 * 8'9

Built in rob. Laminate wooden floor.

Bathroom

White suite comprising panel bath with telephone hand shower. Low flush WC. Fully tiled walls. Extractor fan. Wash hand basin.

PARKING

Communal parking spaces to front.

HEATING

Gas fired central heating.

WINDOWS

PVC double glazed windows.

EPC RATING

C75

MANAGEMENT CO INFO

CSM

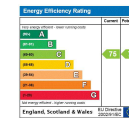
£188.77 Quarterly

The Reeds Rains branches at 350 Upper Newtownards Road, Ballyhackamore, Belfast, N Ireland BT4 3EX, 18 Main Street, Bangor, Co Down, N Ireland BT20 5AG, Somerset House, 240-242 Ormeau Road, Belfast, Co Antrim, N Ireland BT7 2FZ, 10 High Street, Carrickfergus, Co Antrim, N Ireland BT38 7AF, 8/8A Carnmoney Road, Glengormley, County Antrim, N Ireland BT36 6HN, 14/16 Market Street, Lisburn, County Antrim, N Ireland BT28 1AB and 2 Frances Street, Newtownards, County Down, N Ireland BT23 4JA are operated by Favscos NI Limited which is independently owned and are operated under a Licence from Reeds Rains Limited.

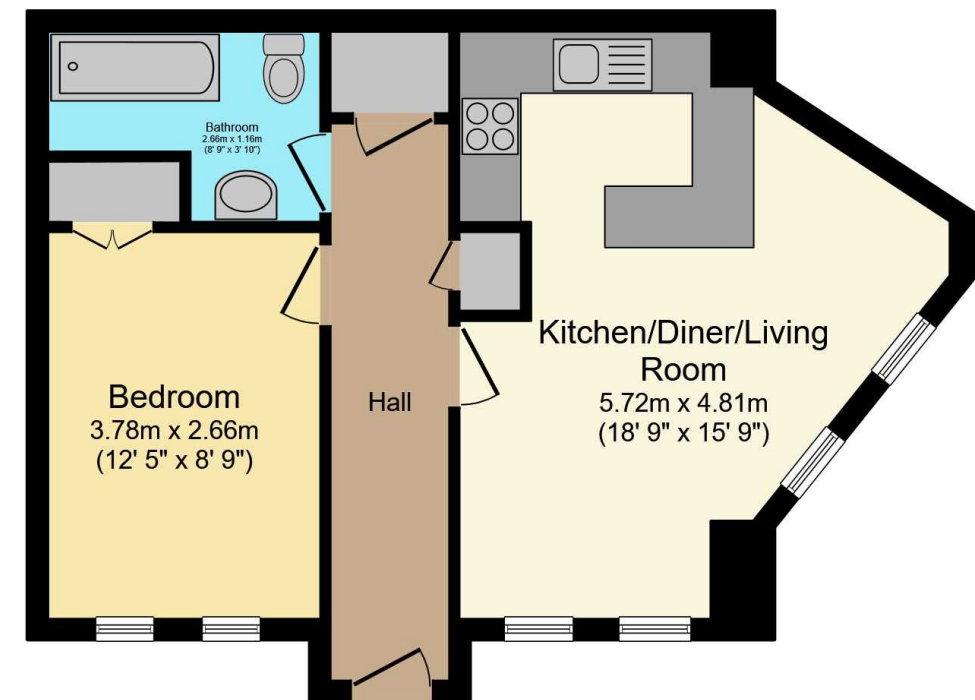
All Measurements
All Measurements are Approximate.

Laser Tape Clause
All measurements have been taken using a laser tape measure and therefore, may be subject to a small margin of error.

Floorplan Clause
Measurements are approximate. Not to Scale. For illustrative purposes only.



For full EPC please contact the branch.



Total floor area 44.8 sq.m. (482 sq.ft.) approx

This floor plan is for illustrative purposes only. It is not drawn to scale. Any measurements, floor areas (including any total floor area), openings and orientation are approximate. No details are guaranteed, they cannot be relied upon for any purpose and they do not form part of any agreement. No liability is taken for any error, omission or misstatement. A party must rely upon its own inspection(s).
Powered by www.focalagent.com