

25A Steeple Road, Antrim, BT41 1DN



**PRICE Offers
Over £239,950**

>Sales >New Homes >Commercial >Rentals >Mortgages

Antrim
12 Church Street
BT41 4BA
Tel: (028) 9446 6777

Ballyclare
51 Main Street
BT39 9AA
Tel: (028) 9334 0726

Glengormley
9A Ballyclare Road
BT36 5EU
Tel: (028) 9083 0803



Welcome to this charming and recently renovated detached gate house bungalow located on Steeple Road in Antrim! This property boasts three spacious reception rooms, perfect for entertaining guests or simply relaxing with your family.

With four cosy bedrooms, there's plenty of space for everyone to unwind and recharge.

The two bathrooms in this bungalow provide convenience and comfort for the whole household. Imagine starting your day with a refreshing shower in one of these well-appointed bathrooms.

One of the standout features of this property is the ample parking space available for up to six vehicles. Say goodbye to the hassle of searching for parking - you and your guests can park comfortably right at your doorstep.

Whether you're looking for a peaceful retreat or a place to create lasting memories with your loved ones, this detached bungalow on Steeple Road offers the perfect blend of comfort and convenience. Don't miss out on the opportunity to make this property your new home!

FEATURES

- Entrance hall with exposed ceiling timbers
- Living room with feature double sided multifuel stove / Spiral staircase to storage / Playroom
- Dining room with open archway to hall
- Kitchen with informal dining / Full range of high and low level 'Country' style units / "Belfast" sink / Stable door
- Living room with double glazed French doors to side
- Bathroom with W/C and separate recently installed shower-room with W/C
- Mostly PVC double glazed windows / Feature windows to original cottage / Oil-fired central heating
- Stoned drive to substantial parking / Attached garage
- Large site in neat lawn and mature trees
- Excellent opportunity for first time buyers and growing families alike

ACCOMMODATION

Covered open entrance porch with hard wood leaded glass entrance door and sidelights to:-

ENTRANCE HALL

Dado rail. Exposed ceiling timber. Wood laminate flooring. Double radiator.



LIVING ROOM 14 x 13'2

Feature inset double sided cast iron multi fuel stove with granite hearth and pitch pine mantle. Dual aspect windows. Double height ceiling. 4 x double radiators. Feature spiral staircase to:-



FIRST FLOOR PLAYROOM 10'4 x 9'11

Plus eaves storage. Double glazed leaded glass window. Exposed beams.

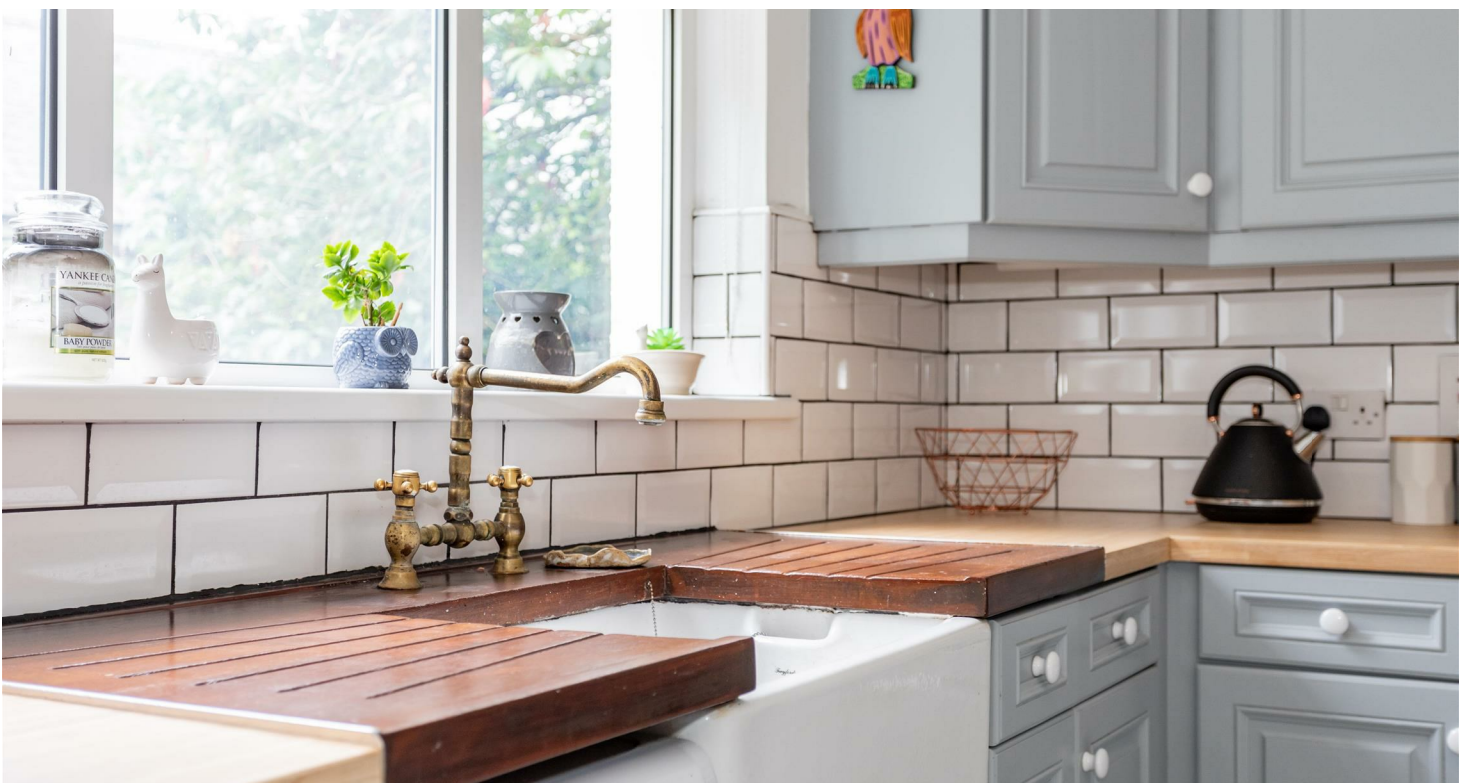
DINING ROOM 12 x 10'3

Reverse side of multifuel stove. Solid wood floor. Open to living and open archway to entrance hall. Double radiator.



KITCHEN / INFORMAL DINING AREA 14'3 x 10'8

Full range of pine high and low level units with glazed display and contrasting work surfaces with "Belfast" sink with antique style brass mixer taps and double wooden drainer. Partially tiled walls to work surfaces. Fully tiled floor. Space for cooker with over-head extractor fan. Space for fridge freezer. Half wood strip walls. Exposed ceiling beams. Stable door with leaded glass port-light. Single radiator.





BATHROOM

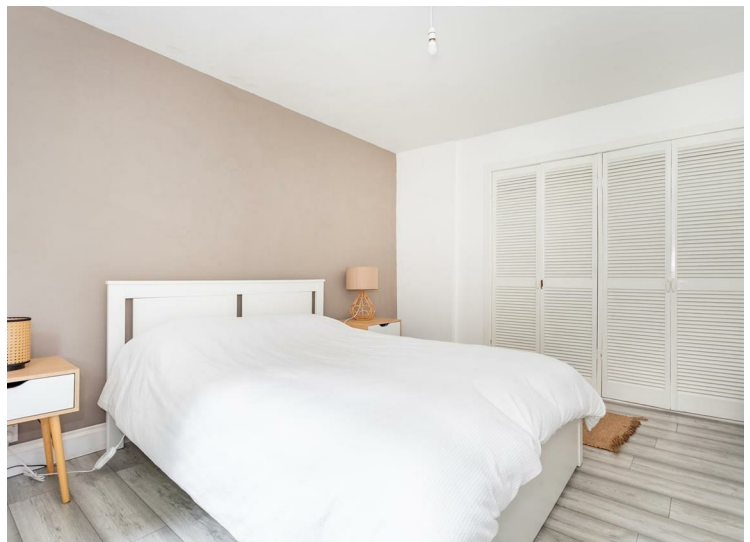
White suite comprising panelled bath with chrome antique style telephone hand shower. Low flush push button W/C and pedestal wash hand basin. Half tiled walls. Cork floor. Single radiator.

INNER HALL

2No. skylights. Storage cupboard with shelving. Single radiator.

FAMILY ROOM 14'9 x 10'4

Solid wood floor. Arched alcove with 'Worcester' gas combi boiler. PVC double glazed French doors and sidelights to garden.



BEDROOM 1 12'9 x 10'8

Double louvered doors to built-in wardrobes.
Double radiator.

BEDROOM 2 10'6 x 9'8

Double radiator.

BEDROOM 3 10'5 x 7'9

Wood laminate floor. Double radiator.

BEDROOM 4 10'5 x 7'6

Wood laminate floor. Double radiator.



SHOWER ROOM

Recently installed modern white suite comprising low flush push button W/C, wash hand basin with LED backlit mirror and storage below. Fully tiled shower cubicle with "Drench" shower head and partially glazed sliding door. Fully tiled floor and walls. Single radiator.



OUTSIDE

Shared stone drive to substantial parking and access to garage. Feature stone wall to front. Garden to front, side and rear in neat lawn and mature borders and trees. Raised and paved patio area to side and rear. PVC tank.

ATTACHED GARAGE 15'4 x 11'4

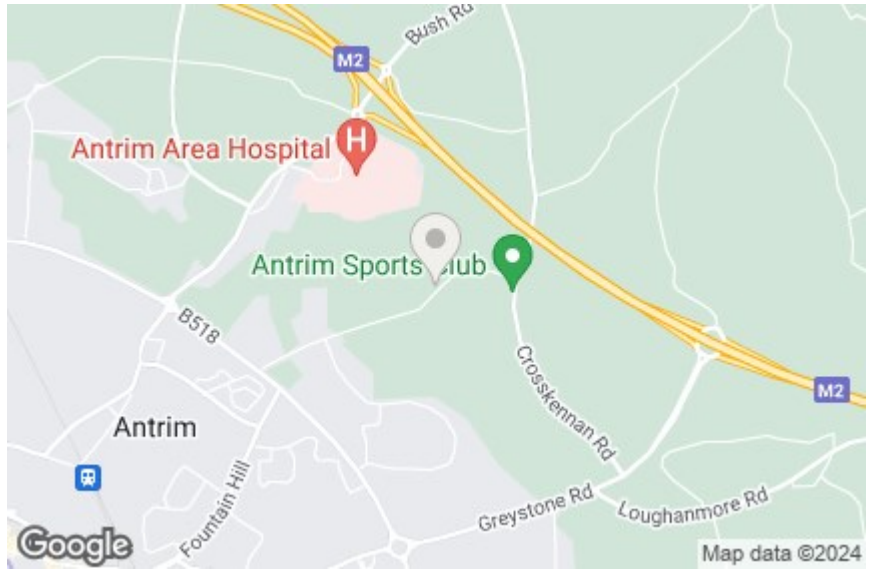
Oil-fired boiler. Up and over door. Power and light. Extensive garden to rear.

IMPORTANT NOTE FOR ALL POTENTIAL PURCHASERS;

Please note that none of the systems or appliances have been tested at this property.



Energy Efficiency Rating		
	Current	Potential
Very energy efficient - lower running costs		
(92 plus) A		
(81-91) B		
(69-80) C		
(55-68) D		
(39-54) E		
(21-38) F		
(1-20) G		
Not energy efficient - higher running costs		
Northern Ireland	EU Directive 2002/91/EC	



Mortgage IQ

Talk to one of our advisers today

12 Church Street, Antrim, Co. Antrim, BT41 4BA
 T: 028 9417 0000
 E: antrim@mortgageIQ.co.uk

IQ

WE KNOW WHAT IT TAKES

Country Estates (N.I) Ltd. for themselves and the Vendors of this property whose agents are, give notice that:

These particulars do not constitute any part of an offer or contract

All statements contained in these particulars as to this property are made without responsibility on the part of Country Estates (N.I) Ltd. or the vendor

None of the statements contained in these particulars as to this property are to be relied on as statements or representations of fact

Any intending purchaser must satisfy himself or otherwise as to the correctness of the statement contained in these particulars

The vendor does not make or give, and neither Country Estates (N.I) Ltd. nor any person in their employment, has any authority to make or give representation or warranty whatever in relation to this property.

