



## 3A CARROWDORE ROAD, GREYABBEY, BT22 2LU



Nestled in the charming Carrowdore Road of Greyabbey, this stunning six-bedroom detached chalet bungalow is a true gem waiting to be discovered. Boasting two reception rooms, this property offers ample space.

As you step inside, you are greeted by an open plan kitchen/dining area. The property features three downstairs bedrooms, including a master bedroom with an ensuite for added convenience. The family bathroom, complete with a three-piece white suite, exudes a sense of luxury and relaxation.

Venture upstairs to discover three more bedrooms and a shower room with a pristine white suite, offering comfort and style in equal measure. With oil-fired central heating and double-glazed windows.

Conveniently located just a stone's throw away from local amenities, schools, main arterial routes, and the picturesque coast, this property offers the perfect blend of tranquillity and accessibility. Don't miss the opportunity to make this beautiful family home your own.

Early viewing recommended.

Energy Efficiency Rating		Current	Potential
Very energy efficient - lower running costs			
(92 plus)	A		
(81-91)	B		
(69-80)	C		
(55-68)	D		
(39-54)	E		
(21-38)	F		
(1-20)	G		
Not energy efficient - higher running costs			
Northern Ireland		EU Directive 2002/91/EC	

**£1,700 PER MONTH**

## 3A CARROWDORE ROAD, GREYABBEY, BT22 2LU

### Key Features

- Spacious Six Bedroom Detached Property With Integral Garage And Yard
- Six Double Bedrooms Master With Ensuite Shower Room
- Oil Fired Central Heating And Double Glazed Windows
- Early Viewing Recommended To Not Miss Out On a Beautiful Family Home
- Open Plan Kitchen/Dining With Two Additional Reception Rooms
- Family Bathroom Comprising Of White Suite, Shower Room And Downstairs W/C
- Located A Short Distance From Local Amenities, Schools And Main Arterial Routes





## Accommodation Comprises

### Porch

Tiled floor.

### Hall

Wooden floor, built in storage.

### Lounge

18'0" x 17'11"

Wood laminate floor, multi-fuel burner, tiled hearth, brick surround and wooden mantle.

### Kitchen/Dining Room

22'10" x 13'9"

Fitted kitchen with range of high and low level units, granite work surfaces, double 'Belfast' style sink with mixer tap, breakfast bar with space for dining, storage and integrated microwave, range cooker with gas hob, integrated extractor fan, tiled surround, American style fridge/freezer, tiled floor, space for dining, multi fuel stove with brick surround and wooden mantle, spotlights, double doors into garden.

### Snug/Family Room

11'3" x 14'6"

Gas stove on a brick hearth, tiled floor, built in storage and double doors into the rear garden.

### W/c

White suite comprising wall mounted wash hand basin with mixer tap, low flush, spotlights, tiled floor, part tiled walls.

### Bedroom 1

15'1" x 13'5"

Double bedroom, wood laminate floor and built in storage.

### Ensuite Shower Room

White suite comprising, corner shower overhead shower, sliding glass door, vanity unit with mixer tap and storage, low flush w/c, spotlights, tiled floor and part tiled walls.

### Bedroom 2

17'1" x 14'2"

Double bedroom with built in storage.

### Bedroom 3

13'10" x 13'11"

Double bedroom.

### Bathroom

White suite comprising free standing bath with mixer tap and shower attachment, walk in, wall mounted overhead shower, glass shower screen, jack and jill wash hand basins with mixer taps, low flush w/c, tiled floor, part tiled walls, recessed spotlights, heated towel rail.

### First Floor

### Landing

Eaves storage, velux style window.

### Bedroom 4

15'1" x 11'1"

Double bedroom with dormer window.

### Bedroom 5

11'6" x 18'2"

Double bedroom with dormer window.

### Bedroom 6

13'10" x 13'9"

Double bedroom with built in storage and dormer window.

### Shower Room

White suite comprising walk in, wall mounted overhead shower, glass shower screen, vanity unit with mixer tap and storage, low flush w/c, recessed spotlights, tiled floor, part tiled walls, velux style window.

### Garage

16'2" x 19'1"

Electric roller door, plumbed for washing machine and tumble dryer, lower level units with laminate work surfaces, stainless steel sink with mixer tap and drainer, oil fired boiler, side door leading into yard.

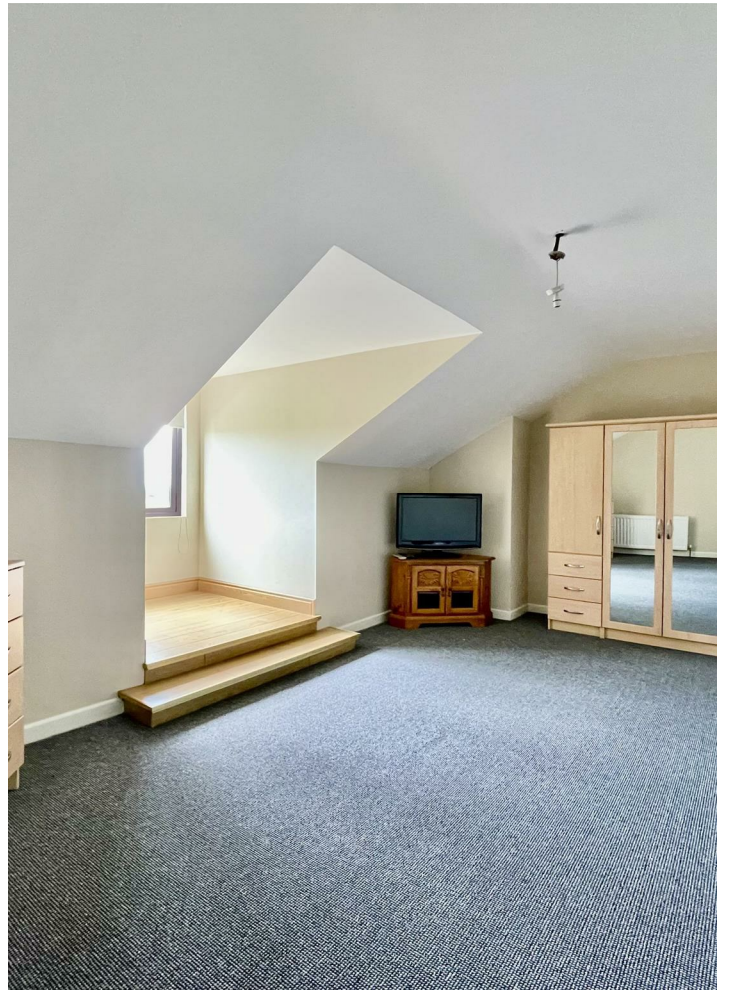
### Outside

Front & Side - Area in lawn, brick paviour pathway, steps up to front door, area in brick paviour patio, steps and ramp access to back door.

Rear - Paved yard with space for multiple vehicles with direct access through to garage.

# 3A CARROWDORE ROAD, GREYABBEY, BT22 2LU









# 3A CARROWDORE ROAD, GREYABBEY, BT22 2LU



Questions you may have.

**Which mortgage would suit me best?**  
**How much deposit will I need?**  
**What are my monthly repayments going to be?**

To answer these and other mortgage related questions contact Louise on .

Your home may be repossessed if you do not keep up repayments on your mortgage.

**We DO NOT charge for initial mortgage consultations. We may charge a fee on completion depending on circumstances. Our typical fee is £250, however, please confirm with Mortgage Consultant at time of appointment. 17914909**

Please note that we have not tested the services or systems in this property. Purchasers should make/commission their own inspections if they feel it is necessary.

ULSTERPROPERTYSALES.CO.UK

ANDERSONSTOWN  
028 9060 5200

BALLYHACKAMORE  
028 9047 1515

BALLYMENA  
028 2565 7700

BALLYNAHINCH  
028 9756 1155

BANGOR  
028 9127 1185

CARRICKFERGUS  
028 9336 5986

CAUSEWAY COAST  
0800 644 4432

CAVEHILL  
028 9072 9270

DOWNPATRICK  
028 4461 4101

FORESTSIDE  
028 9064 1264

GLENGORMLEY  
028 9083 3295

MALONE  
028 9066 1929

NEWTOWNARDS  
028 9181 1444

RENTAL DIVISION  
028 9070 1000

CWS Properties Ltd; Trading under licence as Ulster Property Sales (Newtownards) Reg. No. NI616437;  
Registered Office: 324 Upper Newtownards Road, Belfast BT4 3EX  
@Ulster Property Sales is a Registered Trademark

