



21 Cronstown Cottage Park , Newtownards, BT23 8QP

Located in the ever popular Cronstown Cottages area of Newtownards these semi detached homes have always been sought after due to their excellent internal space and layout. This property follows the standard layout of 3 first floor bedrooms, including master with en-suite shower room, and a family bathroom, but has been reconfigured on the ground floor to provide a lounge, with feature fireplace, and a combined L-shaped kitchen with dining room plus an additional sun room to the rear. It benefits from uPVC double glazing and oil fired central heating whilst, externally, there is a tarmac driveway to the front & side, a low maintenance bed to the front and an enclosed, paved patio garden to the rear. The property has been priced to allow for some further general modernisation and upgrading but would be expected to include replacement floor coverings and some redecoration to suit individual tastes. With excellent local shops and schools plus ease of access to Newtownards, Bangor and beyond now could be your right time to buy a Cronstown Cottage home for yourself.

Offers Around £189,950

21 Cronstown Cottage Park , Newtownards, BT23 8QP



- Cronstown style semi detached home
- Open plan Kitchen/Dining room with breakfast bar
- Low maintenance gardens to front and rear
- Tarmac driveway
- 3 bedrooms - master en-suite
- Sun room to rear
- uPVC double glazing
- Lounge with open fireplace
- Family bathroom
- Oil fired central heating

Entrance

Entrance hall

9'4x7'7 (2.84mx2.31m)

Lounge

15'8x11'9 (4.78mx3.58m)

Kitchen/Dining room

21'5x18'2 (6.53mx5.54m)

Sun room

10'10x10'2 (3.30mx3.10m)

Landing

Bathroom

9'9x5'8 (2.97mx1.73m)

Bedroom 1

13'11x11'10 (4.24mx3.61m)

En-suite shower room

9'3x5'9 (2.82mx1.75m)

Bedroom 2

12x11'10 (3.66mx3.61m)

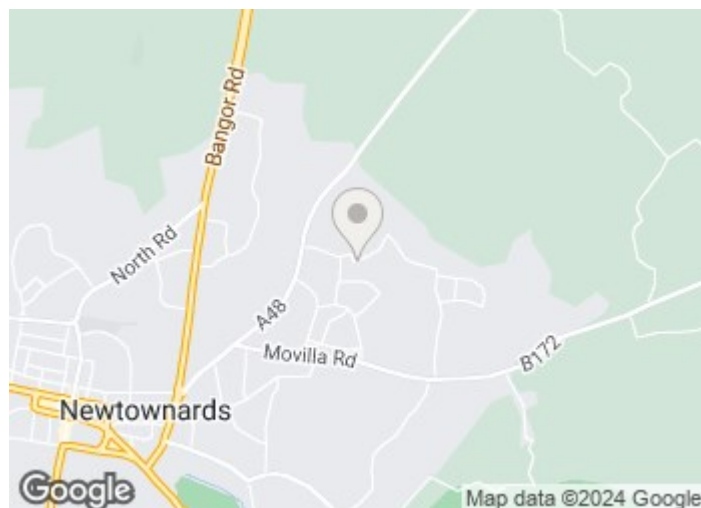
Bedroom 3

9'3x6'8 (2.82mx2.03m)

Outside

Tenure

Property misdescriptions

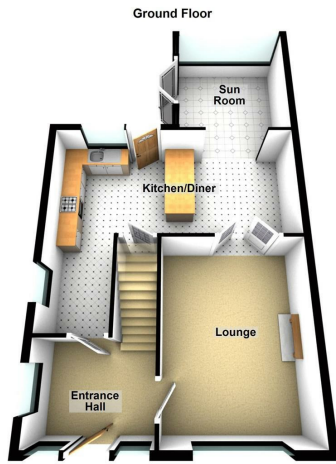


Directions

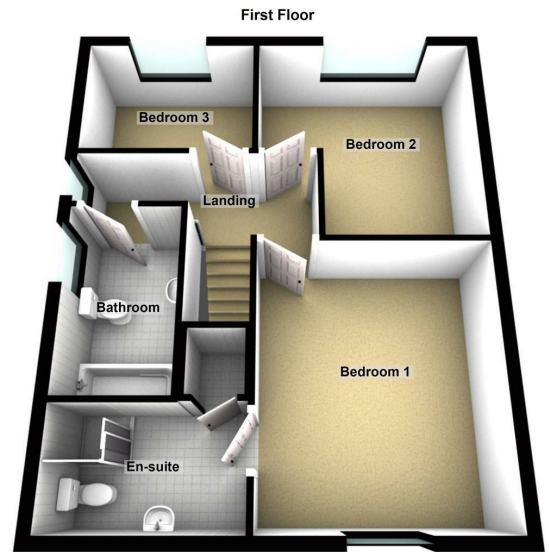
Travelling out of Newtownards along Donaghadee Road turn right into Cronstown Road then 3rd right into Cronstown Cottage Park.



Floor Plan



Images for illustrative purposes only and subject to change. Plan produced using Planity.



These particulars, whilst believed to be accurate are set out as a general outline only for guidance and do not constitute any part of an offer or contract. Intending purchasers should not rely on them as statements of representation of fact, but must satisfy themselves by inspection or otherwise as to their accuracy. No person in this firm's employment has the authority to make or give any representation or warranty in respect of the property.

