



51 CASTLE STREET

Bangor BT20 4SX

- 3 Bedrooms
- Lounge / Dining Area
- uPVC Double Glazing
- Phoenix Gas Heating System
- Grey Gloss Kitchen
- White Bathroom Suite
- Off Street Parking
- Well Presented Throughout
- Handy Location

Energy Efficiency Rating		Current	Potential
<i>Very energy efficient - lower running costs</i>			
(92 plus)	A		
(81-91)	B		
(69-80)	C		
(55-68)	D	59	59
(39-54)	E		
(21-38)	F		
(1-20)	G		
<i>Not energy efficient - higher running costs</i>			
Northern Ireland		EU Directive 2002/91/EC	

Offers Over £130,000

51 Castle Street

, Bangor, BT20 4SX



ACCOMMODATION

Entrance door into ...

ENTRANCE PORCH

Glazed entrance door into ...

ENTRANCE HALL

LOUNGE

10'1" x 9'5" (3.07m x 2.87m)

Open fireplace with cast iron multi-fuel stove, tiled hearth and slate hearth. Laminated wood floor.

DINING ROOM

10'5" x 9'6" (3.18m x 2.90m)

Understairs storage cupboard. Laminated wood floor.

KITCHEN

8'7" x 6'11" (2.62m x 2.11m)

Range of grey gloss high and low level cupboards and drawers with butcher

block work surfaces. Ceramic single drainer sink unit with mixer taps.

Extractor canopy with integrated fan and light. Plumbed for washing machine. Ceramic tiled floor. Part tiled walls. Concealed lighting.

STAIRS TO FIRST FLOOR

BATHROOM

White suite comprising: Bath with claw feet, mixer tap and telephone shower attachment with thermostatic shower over. Pedestal wash hand basin. W.C. Tiled walls.

BEDROOM 1

13'11" x 9'5" (4.24m x 2.87m)

Open fireplace with cast iron surround and ornamental tiled insets.

BEDROOM 2

10'5" x 8'5" (3.18m x 2.57m)

BEDROOM 3

9'6" x 9'3" (2.90m x 2.82m)

Fixed staircase. Double glazed Velux window. Access to eaves.

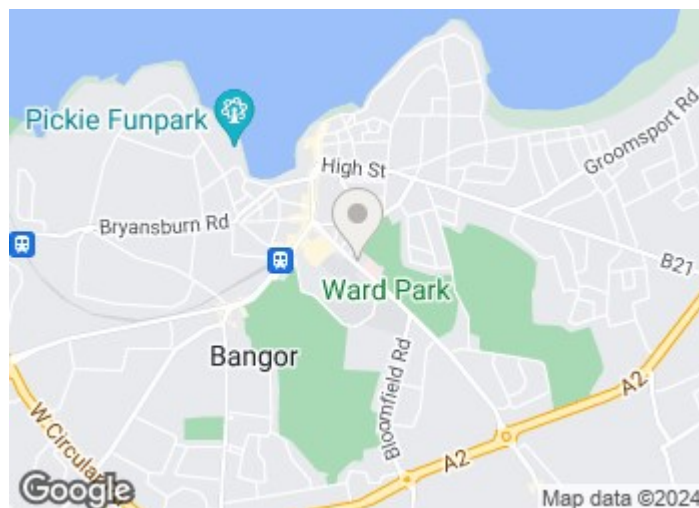
OUTSIDE

FRONT

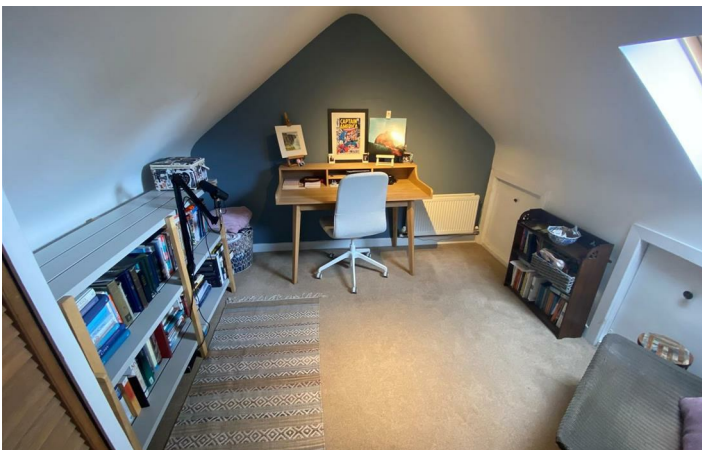
Garden.

REAR

Covered Yard. Outside store. Plumbed for washing machine. Off street parking.



Directions



Floor Plan

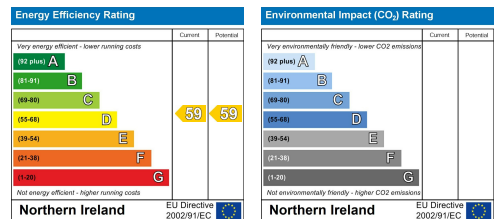
51 Castle Street, Bangor. BT20 4SX



Total Area: 78.8 m² ... 849 ft²

All measurements are approximate and for display purposes only

These particulars, whilst believed to be accurate are set out as a general outline only for guidance and do not constitute any part of an offer or contract. Intending purchasers should not rely on them as statements of representation of fact, but must satisfy themselves by inspection or otherwise as to their accuracy. No person in this firm's employment has the authority to make or give any representation or warranty in respect of the property.



ULSTERPROPERTYSALES.CO.UK

ANDERSONSTOWN
028 9060 5200
BALLYHACKAMORE
028 9047 1515
BALLYMENA
028 2565 7700

BALLYNAHINCH
028 9756 1155
BANGOR
028 9127 1185
CARRICKFERGUS
028 9336 5986

CAUSEWAY COAST
0800 644 4432
CAVEHILL
028 9072 9270
DOWNPATRICK
028 4461 4101

FORETSIDE
028 9064 1264
GLENGORMLEY
028 9083 3295
MALONE
028 9066 1929

NEWTOWNARDS
028 9181 1444
RENTAL DIVISION
028 9070 1000



Jonathan Collins trading under licence as Ulster Property Sales (North Down)
©Ulster Property Sales is a Registered Trademark