

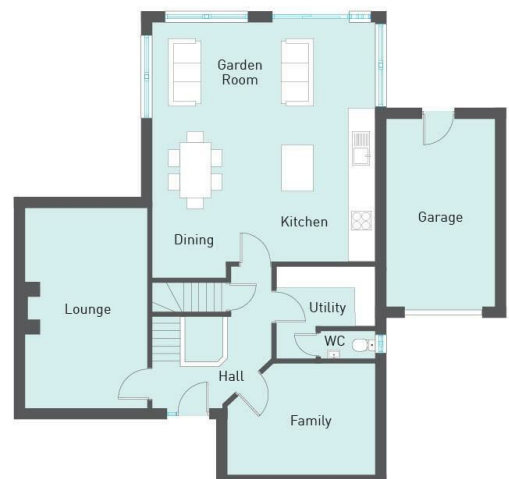


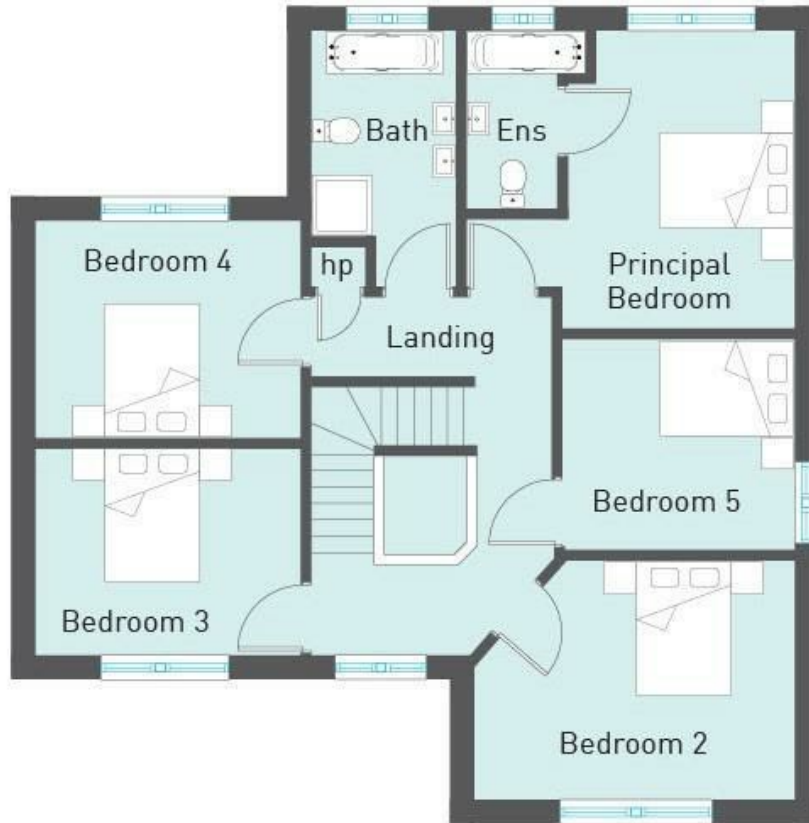
Site 67 The Mews, Jordanstown, Newtownabbey, BT37 0NQ

- Family Sized New Build Detached (c.2,200 sq ft)
- Lounge; Family Room; Sun Lounge
- Utility Room; Furnished Cloakroom
- Private Driveway; Attached Garage
- Well Sought After Development
- Five Bedrooms; Principal En Suite
- Kitchen Through Dining Room
- Gas Heating; PVC Double Glazing
- Gardens Front, Side & Rear
- PC Sum: £20,000

Offers Over £410,000

EPC Rating





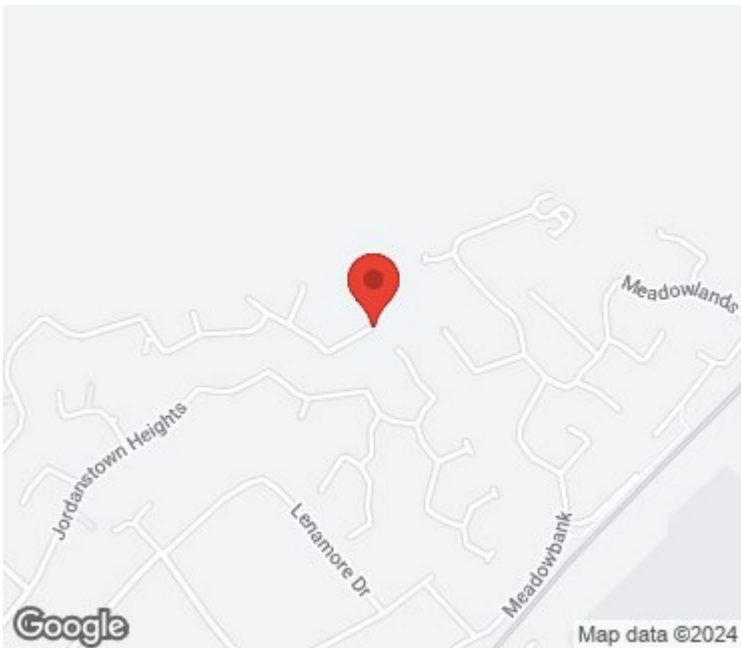
PROPERTY DESCRIPTION



**COLIN
GRAHAM
RESIDENTIAL**
...WE SELL HOUSES



Generous sized, five bedroom, new build, detached home, extending to c.2,200 sq ft (plus garage), occupying a prime corner site, situated within the highly sought after 'The Mews' development, Jordanstown Road, Jordanstown, Newtownabbey. The property comprises entrance hall, furnished cloakroom, lounge, family room, kitchen through dining room, sun lounge, utility room, five well-proportioned first floor bedrooms, to include principal en suite, and separate family bathroom. Externally, the property enjoys private driveway, attached garage and gardens front, side and rear. Other attributes include gas heating, PVC double glazing, and PC sum allowance of £20,000. Early interest highly recommended to avoid disappointment.



Energy Efficiency Rating		
	Current	Potential
Very energy efficient - lower running costs		
(92 plus) A		
(81-91) B		
(69-80) C		
(55-68) D		
(39-54) E		
(21-38) F		
(1-20) G		
Not energy efficient - higher running costs		
Northern Ireland	EU Directive 2002/91/EC	

Agents Note: Whilst every care has been taken to prepare these sales particulars, they are for guidance purposes only. All measurements are approximate and for general guidance purposes only and whilst every care has been taken to ensure their accuracy, they should not be relied upon and potential buyers are advised to recheck the measurements

INVESTORS IN PEOPLE
We invest in people Gold

PRS Property Redress Scheme

Proudly sponsoring



Awards

