



FREE INDEPENDENT FINANCIAL ADVICE

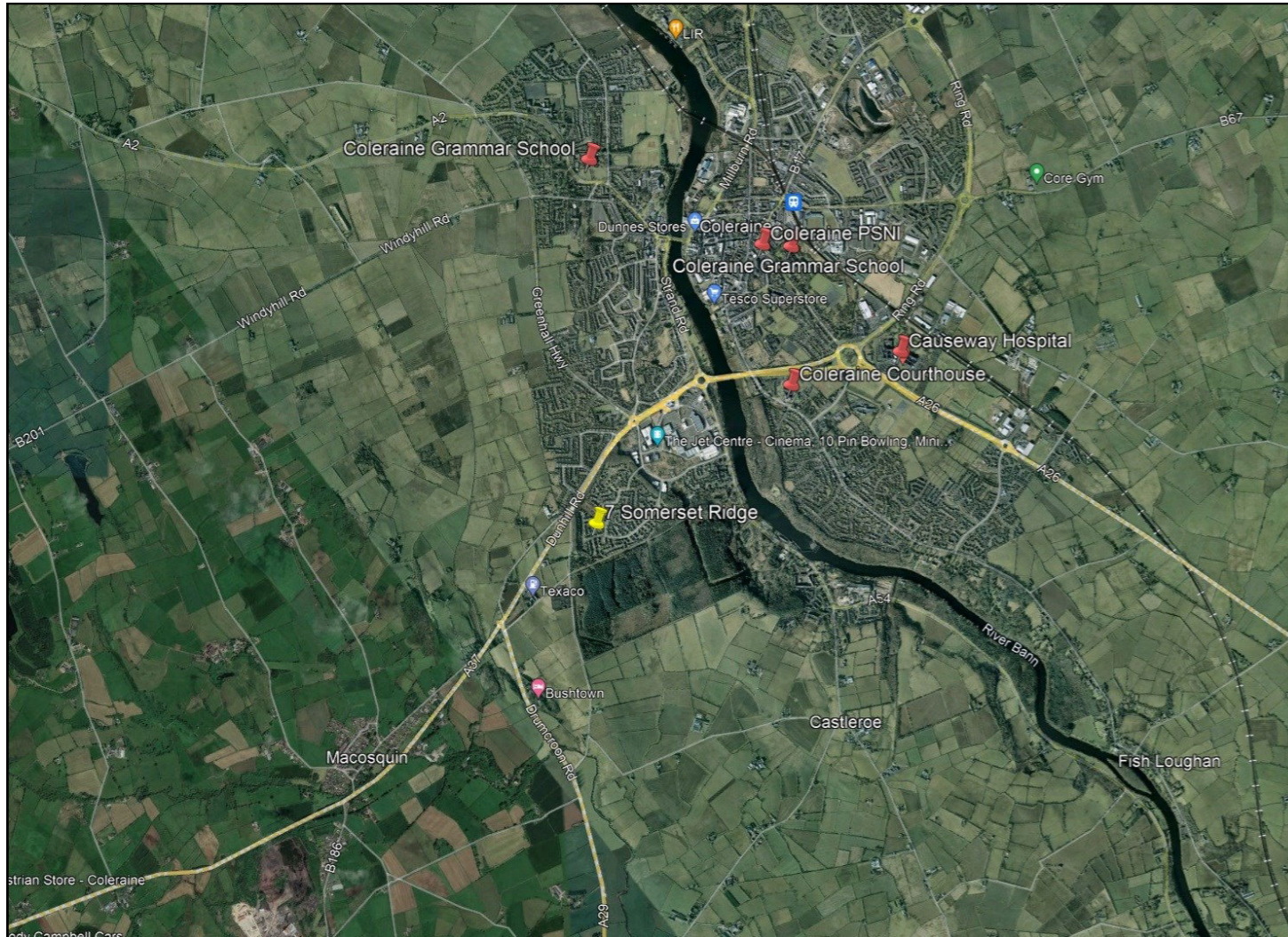
Mortgage Services:
 First Time Buys
 Home Movers
 Remortgaging
 Holiday/ Second Homes
 Holiday Lets
 Buy To Let
 Co-Ownership

Other Financial Services:
 Mortgage Protection
 Life Insurance
 Critical Illness Cover
 Income Protection
 Buildings & Content Insurance
 Landlord Insurance

To arrange a private consultation appointment, please contact Armstrong Gordon on 028 7083 2000



ARMSTRONG GORDON



64 The Promenade Portstewart BT55 7AF
 T. 028 7083 2000

F. 028 7083 2950 E. info@armstronggordon.com W. www.armstronggordon.com

Score	Energy rating	Current	Potential
92+	A		
81-91	B		
69-80	C		
55-68	D	59 D	64 D
39-54	E		
21-38	F		
1-20	G		

COLERAINE

7 Somerset Ridge

BT51 3GL

Offers Over £319,500

Armstrong Gordon & Co. Ltd Estate Agents for themselves and for the vendors and for the lessors of this property whose agents they are given notice that: (1) the particulars are set out as a general outline only for the guidance of intending purchasers or lessees, and do not constitute, nor constitute part of an offer or contract; (2) all descriptions, dimensions, references to condition and necessary permissions for use and occupation and other details are given without responsibility and any intending purchaser or tenants should not rely on them as statements or representations of fact but must satisfy themselves by inspection or otherwise as to the correctness of each of them; (3) no person in the employment of Armstrong Gordon has any authority to give any representation or warranty whatever in relation to this property

028 7083 2000
 www.armstronggordon.com

Located on a generously proportioned mature site on the edge of Coleraine, this is a beautiful four bedroom detached family home which is immaculately presented throughout. Having been constructed circa 1998, the property itself extends to approximately 2,120 sq ft of purely family living space and has been well maintained over the years. Internally the property is both bright and spacious with well laid out rooms. Externally the property benefits from mature gardens to front, side and rear and is approached by a generous sized tarmac driveway leading to integral garage. Location wise, the property will ensure ease of access to the commuter via main arterial routes to Belfast and Londonderry and of particular benefit to families is the fact that this fine home lies within the catchment area of a selection of the towns' main schools. This is a fantastic opportunity to acquire a fabulous family home in great decorative order with plenty of garden space all around.

Leaving Coleraine on the Dunhill Road, turn left at the Greenmount Roundabout onto Somerset Road. Take your first right after Roadside Garages into Somerset Ridge. No. 7 will be located at the top of the development on your right hand side opposite the entrance to Litchfield Park.

ACCOMMODATION COMPRISES:

FIRST FLOOR:

Entrance Hall:

7'0 wide with recessed lighting, Amtico flooring and feature glass blocks through to kitchen/dining.

Separate W.C.:

With wash hand basin, half tiled walls and tiled floor.



Kitchen: 13'4 x 12'12

With bowl and half single drainer stainless steel sink unit, high and low level built in units, stainless steel splashback, space for fridge freezer, integrated dishwasher, eye level oven, large corner pantry, glass display cabinets, wine rack, saucepan drawers, island with four ring gas hob, stainless steel extractor fan above, additional saucepan drawers below, recessed lighting and Amtico flooring.



Steps down to:

Dining Area:

With wiring for wall lights and Amtico flooring. 9'8 x 9'7



Family Area:

With Victorian style fireplace with tiled hearth, recessed lighting, Amtico flooring and French PVC doors leading to rear garden. 12'6 x 10'7



Utility Room:

With single drainer stainless steel sink unit, high and low level built in units, plumbed for automatic washing machine, part tiled walls, Amtico flooring and pedestrian door leading to integral garage. 9'7 x 4'9

Lounge:

With Victorian style fireplace with cast iron and tiled inset, tiled hearth, Amtico flooring and French doors leading to rear garden. 15'4 x 12'7



Sun Room:

With recessed lighting, tiled floor and PVC pedestrian door leading to rear garden. 12'7 x 10'2



Study/Office:

12'6 x 6'5

FIRST FLOOR:

Landing:

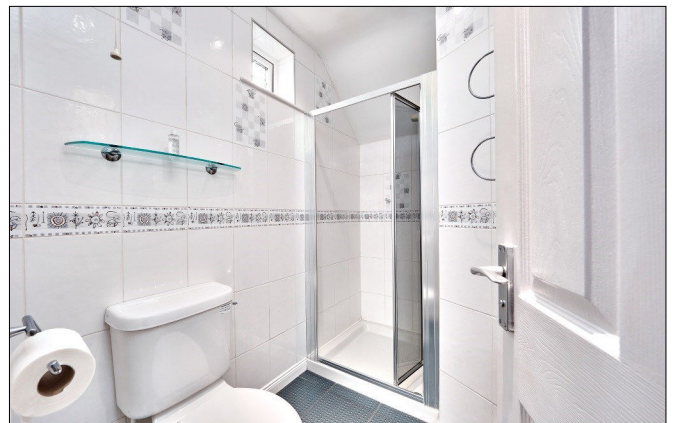
With hot press, access to roof space accessed by Slingsby ladder which is fully floored with light and power points, additional storage, recessed lighting and Amtico flooring.



Bedroom 1:

With Amtico flooring. 11'8 x 11'5

Ensuite off with w.c., wash hand basin, fully tiled walk in shower cubicle with electric shower, fully tiled walls, recessed lighting and extractor fan.



Bedroom 2:

With Amtico flooring. 10'8 x 10'5 average



Bedroom 3:

With Amtico flooring. 12'7 x 10'2 average



Bedroom 4:

With Amtico flooring. 12'3 x 9'7 average



Bathroom:

With white suite comprising w.c., wash hand basin, fully tiled walk in shower cubicle with electric shower, fully tiled walls, recessed lighting and extractor fan.



EXTERIOR FEATURES:

Garden to rear is laid in lawn and fully fenced in with extensive paved patio area, additional patio area surrounded by fencing and shrubbery. Large decked area with screened areas. Lights to front and rear. Tap to rear.

SPECIAL FEATURES:

- ** Oil Fired Central Heating
- ** PVC Double Glazed Windows
- ** Integral Garage
- ** Good Decorative Order
- ** Popular Residential Area

TENURE:

TBC

CAPITAL VALUE:

£185,000 (Rates: £1813.74 p/a approx.)

