



Located in the heart of the tranquil coastal village of Groomsport, Rock Cottages is an outstanding beachfront development of only four luxuriously appointed townhouses, each offering superb uninterrupted sea views with a breathtaking panorama extending from the Copeland Islands to the North Antrim Hills and beyond.

This unique townhouse affords a notably spacious and adaptable layout briefly comprising three bedrooms – two with ensuite, first floor lounge, an open plan kitchen living dining plus study, main bathroom, cloaks WC and utility. Externally, the extensive use of natural Scrabo stonework creates a traditional feel, in keeping with the local environment. The development benefits from a private driveway leading into a residents parking area, with communal garden area overlooking the shore. Groomsport is renowned for its scenic charm and historical heritage. Boasting a traditional fishing harbour, sandy beaches and superb coastal walks, the village also offers a host of local amenities to include quality pubs and restaurants, shops, post office, churches, local primary school and active sailing club. A regular bus service operates to Donaghadee and Bangor, where there are onward bus and rail links to Belfast.

Offers Around
£399,950

“Rock Cottages”,
42 Main Street,
Groomsport,
BANGOR, BT19 6JR

Viewing by
appointment
through agent
028 9042 4747

- Luxuriously appointed three storey townhouse
- Located in the heart of the tranquil coastal village of Groomsport
- Superb uninterrupted sea views with a breathtaking panorama extending from the Copeland Islands to Antrim Hills
- Spacious & adaptable layout
- Study
- Lounge
- Open plan kitchen - dining - living
- Three bedrooms - Two with ensuite
- Main bathroom
- Cloaks WC
- Utility
- Electric gates leading to secure parking (for 2 cars)
- Groomsport is a scenic historic village boasting a traditional fishing harbour, sandy beaches and superb coastal walks
- Amenities include quality pubs and restaurants, shops, post office, churches, local primary school & sailing club
- A regular bus service operates to Donaghadee and Bangor, where there are onward bus and rail links to Belfast



The Property Comprises:

Ground Floor

uPVC double glazed front door.

HALLWAY: Solid oak wooden floor.



STUDY: 8' 10" x 5' 7" (2.7m x 1.7m) Solid oak wooden floor.

LIVING ROOM: 18' 8" x 14' 9" (5.7m x 4.5m) Solid oak wooden floor, wall-mounted electric fire.



Lower Level

HALLWAY:

CLOAKS/WC: Low flush wc, pedestal wash hand basin with mixer tap, half PVC panelled walls, ceramic tiled floor.

KITCHEN/DINING: 18' 8" x 15' 9" (5.7m x 4.8m) Shaker style kitchen with range of high and low level units, built-in appliances including Baumatic range cooker, five ring gas hob, oven/grill and stainless steel extractor fan, CDA microwave, stainless steel one and a half bowl sink unit with mixer tap, granite worktops and drainer, built-in fridge/freezer. Ceramic tiled floor, uPVC double glazed door to exterior.



Telephone 028 9042 4747
www.templetonrobinson.com

UTILITY ROOM: 5' 3" x 5' 3" (1.6m x 1.6m) High level cupboard, plumbed for washing machine, space for dryer, ceramic tiled floor, Beam vacuum system.

BEDROOM (3): 14' 9" x 11' 2" (4.5m x 3.4m) Oak wooden floor, skylight window.

ENSUITE SHOWER ROOM: Fully tiled built-in shower cubicle with Triton mains shower unit, pedestal wash hand basin with mixer tap, low flush wc, half tiled walls, ceramic tiled floor, extractor fan.



Second Floor

LANDING:

BEDROOM (1): 18' 8" x 14' 5" (5.7m x 4.4m) Solid oak wooden floor.



SHOWER ROOM: Fully tiled built-in shower cubicle with Mira Sport electric shower unit, pedestal wash hand basin with mixer tap, low flush wc, ceramic tiled floor, part tiled walls, extractor fan.



BEDROOM (2): 12' 6" x 7' 10" (3.8m x 2.4m)



Telephone 028 9042 4747
www.templetonrobinson.com

BATHROOM: Panelled bath with mixer tap, low flush wc, pedestal wash hand basin with mixer tap, PVC panelled walls, ceramic tiled floor, PVC panelled ceiling, extractor fan, window.



Outside

Electric gates leading to sweeping tarmac driveway.

Communal gardens and parking (allocated for two cars).

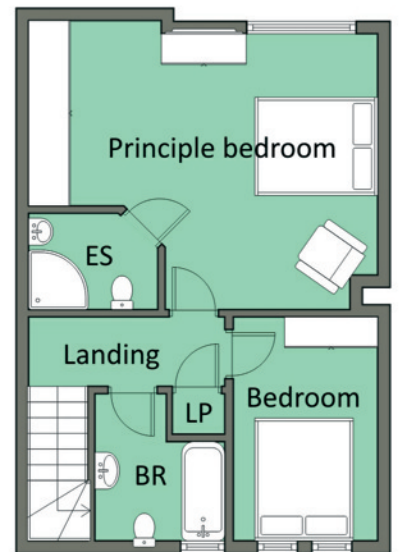
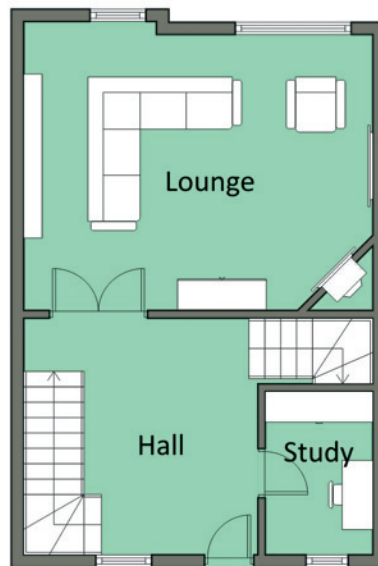
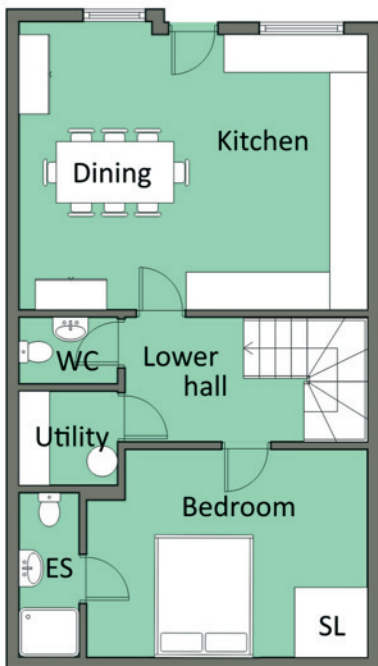
Superb uninterrupted sea views with breathtaking panorama extending from the Copeland Islands to Antrim Hill.





Location:

Travelling through Groomsport along Main Street, Rock Cottages is positioned on the shore side opposite The Stables.



North Down - 028 90 42 4747
 Lisburn Road - 028 90 66 3030
 Ballyhackamore - 028 90 65 0000
 Lisburn - 028 92 66 1700
www.templetonrobinson.com

These particulars do not constitute any part of an offer or contract. None of the statements contained in these particulars are to be relied on as statements or representations of fact and intending purchasers must satisfy themselves by inspection or otherwise to the correctness of each of the statements contained in these particulars. The Vendor does not make or give, neither Templeton Robinson, nor any person in its employment has any authority to make or give, any representation or warranty whatever in relation to this property. All dimensions are taken to nearest 3 inches.