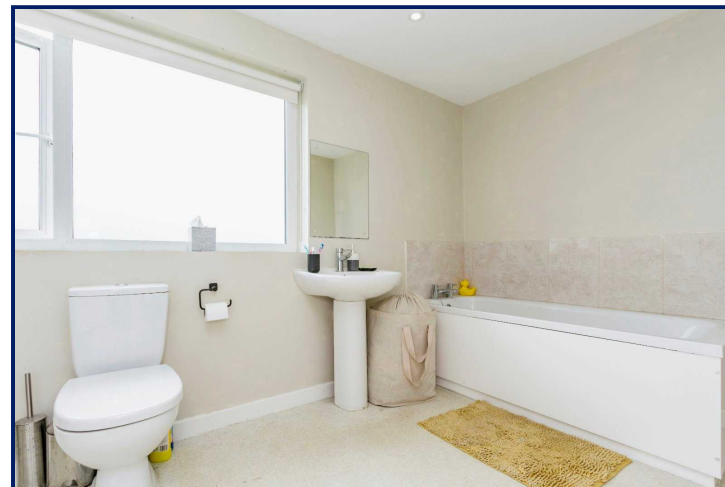


Energy Efficiency Rating		
	Current	Potential
Very energy efficient - lower running costs		
(92+) A		
(81-91) B		
(69-80) C		
(55-68) D		
(39-54) E	51	65
(21-38) F		
(1-20) G		
Not energy efficient - higher running costs		
England, Scotland & Wales	EU Directive 2002/91/EC	



Mossvale Terrace, Dromore,
County Armagh, BT25

Asking Price: £99,950
Leasehold

Reeds Rains

reedsrains.co.uk

Mossvale Terrace, Dromore, County Armagh, BT25

Asking Price: £99,950 Leasehold

Council Tax Band:

EPC Rating: E

An attractive and surprisingly spacious double fronted mid- terraced property situated in this convenient and sought after area of Dromore.

Great road access via the A1 carriageway to Lisburn and Belfast as well as commuting to the South.

Living Room

16'6" x 8'11" (5.03m x 2.72m)

Feature fireplace, laminate flooring.

Dining / Family Room

16'6" x 6'6" (5.03m x 1.98m)

Laminate flooring.

Kitchen

14'8" x 6'5" (4.47m x 1.96m)

Extensive range of high and low level units, single drainer stainless steel sink unit, built-in ceramic hob and electric oven, laminate work tops and part tiled walls.

Landing

Bedroom 1

10'6" x 10'4" (3.2m x 3.15m)

Maximum measurements.

Bedroom 2

10' x 9'1" (3.05m x 2.77m)

Bedroom 3

9'1" x 6'1" (2.77m x 1.85m)

Bathroom

White suite comprising panelled bath, wash hand basin, low level WC, separate shower with electric shower unit.

Rear Gardens

Most extensive gardens in lawns. Oil Fired boiler and oil storage tank.

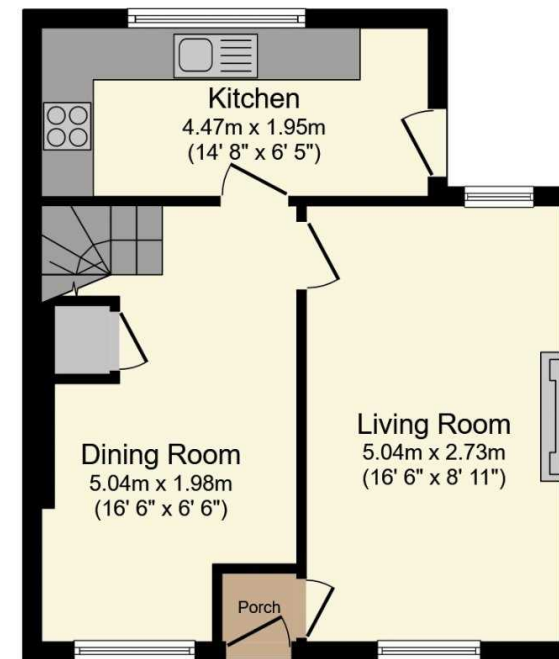
The Reeds Rains branches at 350 Upper Newtownards Road, Ballyhackamore, Belfast, N Ireland BT4 3EX, 18 Main Street, Bangor, Co Down, N Ireland BT20 5AG, Somerset House, 240-242 Ormeau Road, Belfast, Co Antrim, N Ireland BT7 2FZ, 10 High Street, Carrickfergus, Co Antrim, N Ireland BT38 7AF, 8/8A Carnmoney Road, Glengormley, County Antrim, N Ireland BT36 6HN, 14/16 Market Street, Lisburn, County Antrim, N Ireland BT28 1AB and 2 Frances Street, Newtownards, County Down, N Ireland BT23 4JA are operated by Favscio NI Limited which is independently owned and operated under a Licence from Reeds Rains Limited.

All Measurements
All Measurements are Approximate.

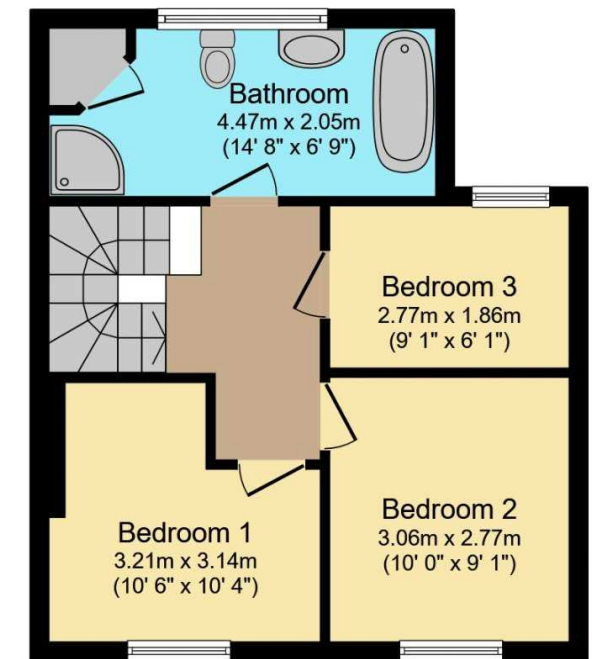
Laser Tape Clause
All measurements have been taken using a laser tape measure and therefore, may be subject to a small margin of error.

Floorplan Clause
Measurements are approximate. Not to Scale. For illustrative purposes only.

For full EPC please contact the branch.



Ground Floor



First Floor

Total floor area 78.9 sq.m. (849 sq.ft.) approx

This floor plan is for illustrative purposes only. It is not drawn to scale. Any measurements, floor areas (including any total floor area), openings and orientation are approximate. No details are guaranteed, they cannot be relied upon for any purpose and they do not form part of any agreement. No liability is taken for any error, omission or misstatement. A party must rely upon its own inspection(s).
Powered by www.focalagent.com